

Quick Set-up Guide



Faxitron™ Path Specimen Radiography System



Faxitron™ Path

Specimen Radiography System

CHECK THE CONTENTS

The **Faxitron Path** system is contained in **1 BOX**:

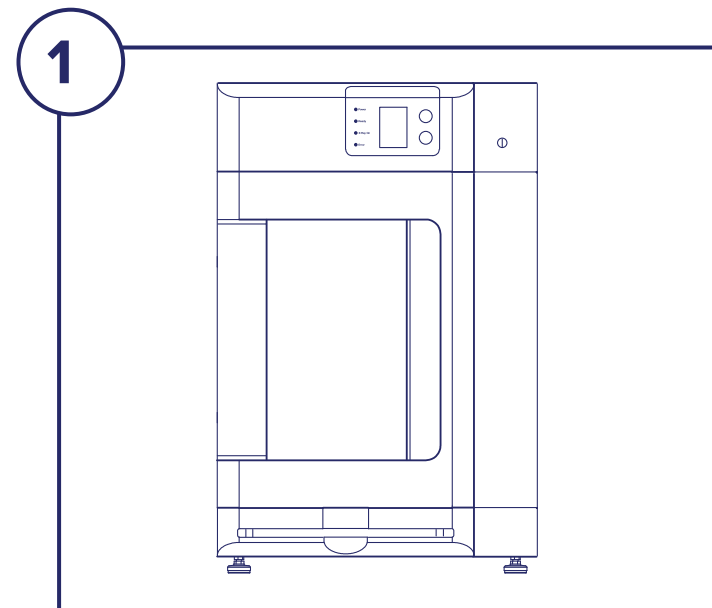
CONTENTS

- Faxitron Path unit
- Faxitron Path Quick Start Guide
- 1 x System monitor with stand
- 1 x Computer
- 1 x Monitor Cable
- 1 x Keyboard
- 1 x Mouse
- 1 x Faxitron Path Mag Tray
- 2 x Keys
- 1 x USB Cable
- 2x Network Cable
- 3 x Power Cords
- 1 x System Install Flash Drive
(Includes User Manual)

Please check the box arrived with no significant visible damage to any of the items.

If there is damage, please call the **Hologic** support team on:

+1 520 399 8139

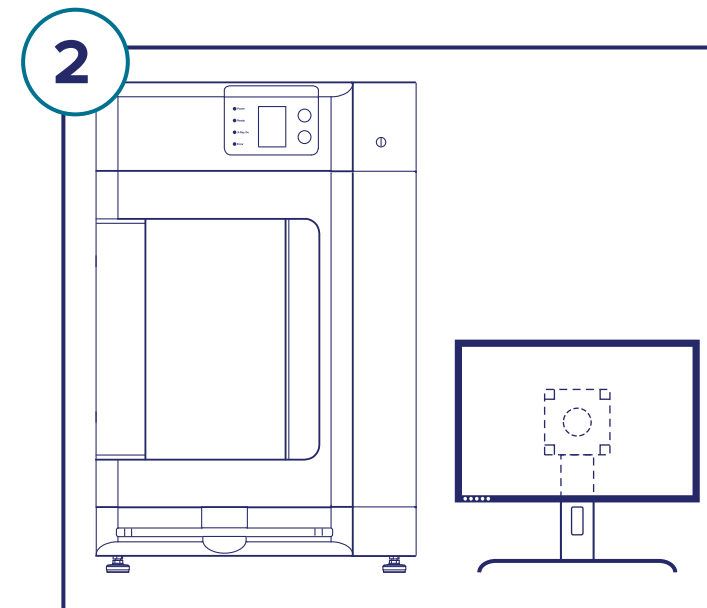


STEP ONE

Open the **CRATE** and unwrap the unit.

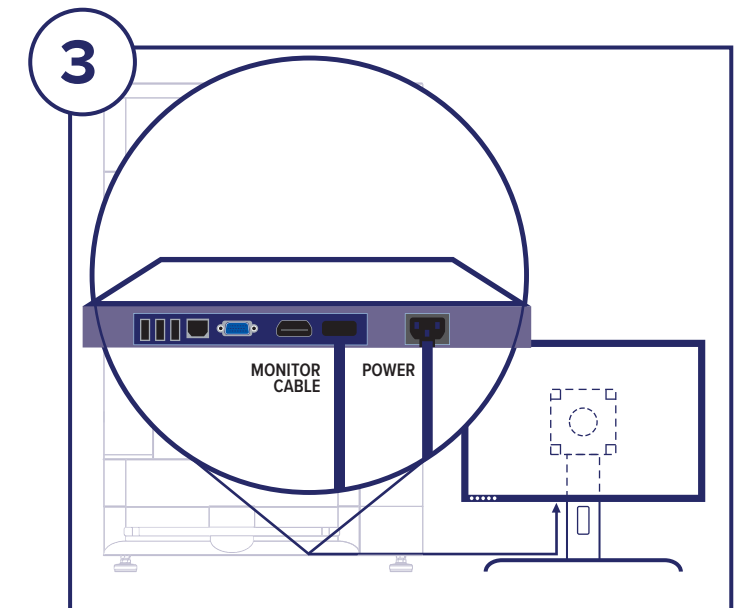
Please check the **Faxitron Path** for damage (cracked or broken plastics, damaged LCD screen, etc.)

The unit weighs close to 500lbs, please obtain assistance to safely move the PathVision from the crate and place it at the desired location.



STEP TWO

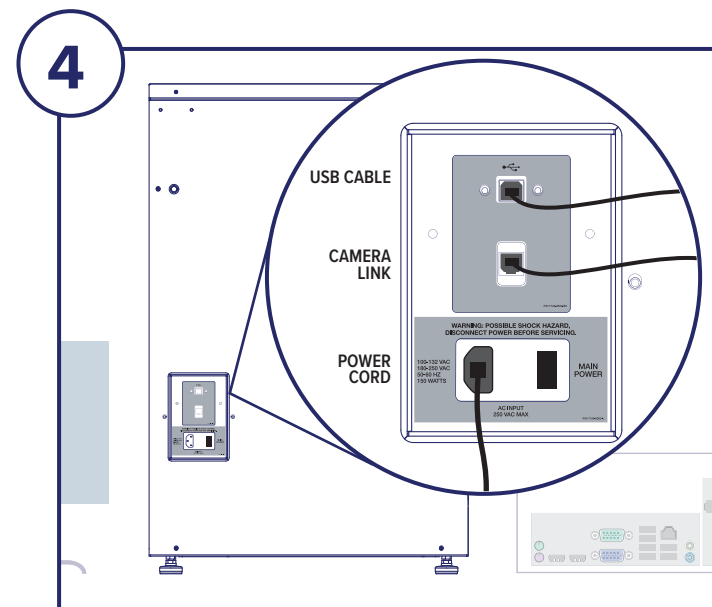
Remove and unpack the monitor and stand.



STEP THREE

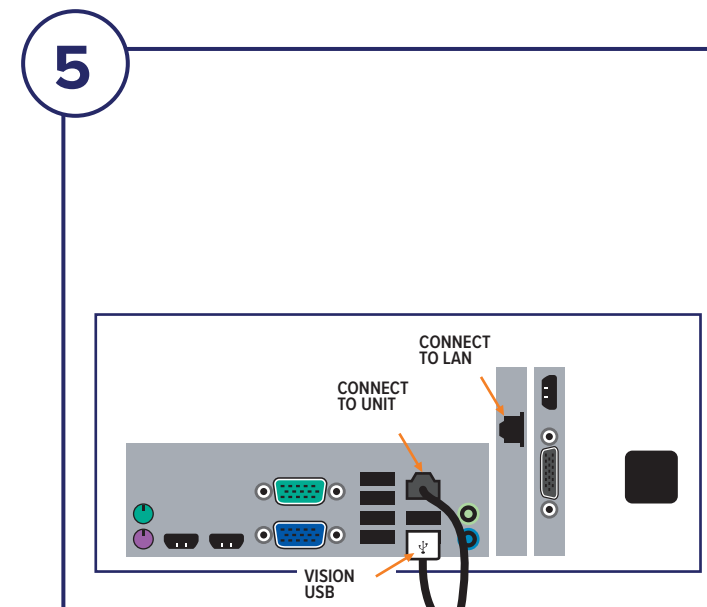
Open the **Faxitron Path** door and remove the Mag Tray, Computer, Keyboard, a Small Box containing documents, cables, cords, keys, and mouse. Open the Small Box and remove all contents. Unwrap the computer and place near the **Faxitron Path** unit and monitor.

Connect the Power Cord and Monitor Cable to the monitor. Image shown is an approximation and may vary slightly.



STEP FOUR

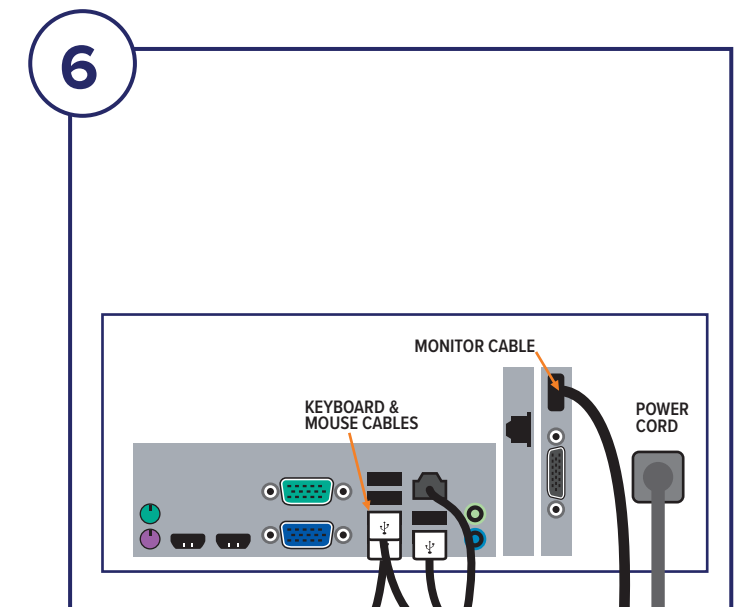
Locate the USB Cable, Ethernet Cable and Power Cord and connect to the back of the **Faxitron Path**.



STEP FIVE

Connect the other ends of the USB and Ethernet Cables to the computer.

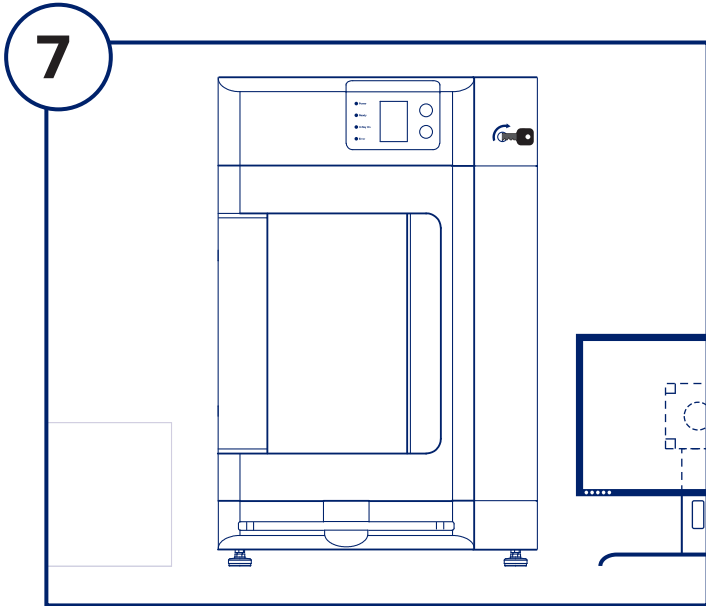
Be sure to plug the USB Cable into the port labeled "Vision USB", and connect the unit Ethernet Cable to the right point on computer, as shown.



STEP SIX

Connect the Monitor Cable and Power Cord into the back of the computer as shown.

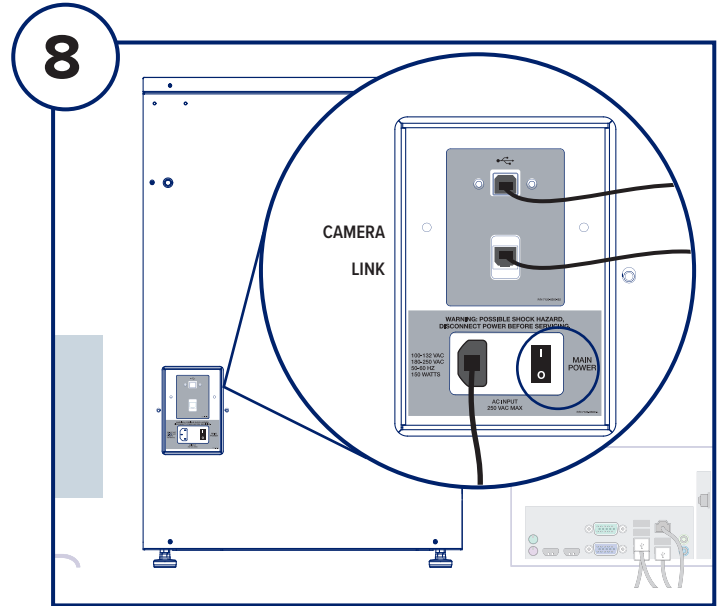
Unpack the keyboard and mouse. Connect to the back of the computer as shown. Plug the computer, monitor and unit power cords into a power receptacle.



STEP SEVEN

Locate the **Faxitron Path** keys and insert into the key switch located on the front of the unit.

Turn on the computer and monitor and allow Windows to start up.



STEP EIGHT

Turn on the power switch on the back of the **Faxitron Path** unit.

Turn the key clockwise to ON.

Double-click the VISION icon.

The system will detect the **Faxitron Path** unit and automatically begin calibration.

For system operation, consult the Quick Start Guide in the document packet.

Faxitron Path system also known as PathVision™ System.



Faxitron Bioptics LLC

3440 E. Britannia Dr, Ste 150,

Tucson, AZ 85706, US

servicedept-faxitron@hologic.com

+1 520 399 8139

www.faxitron.com/support