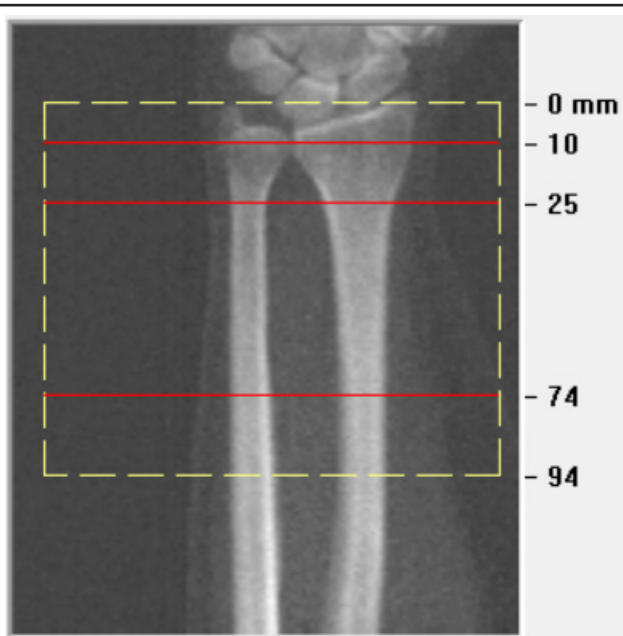


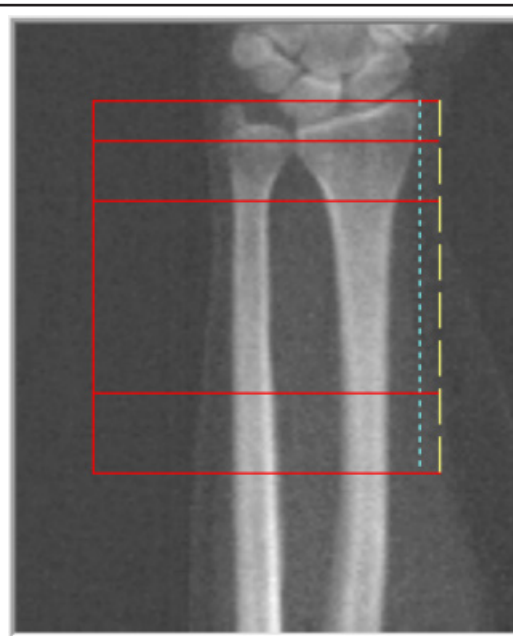
Quick Reference Guide

Forearm Analysis Region of Interest

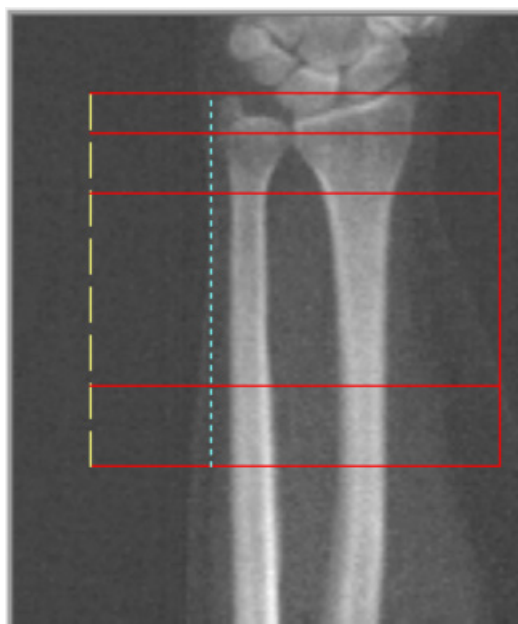
Report Regions Identification



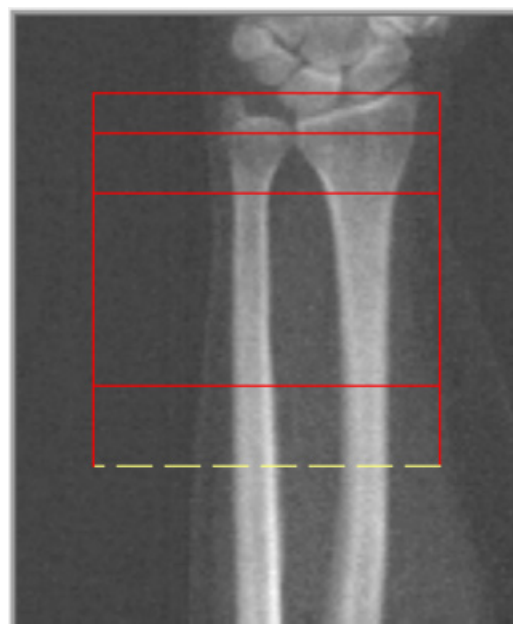
Place top of ROI at tip of Ulna Styloid. (Left forearm example)



Place blue dotted line at outer edge of bone, just touching.

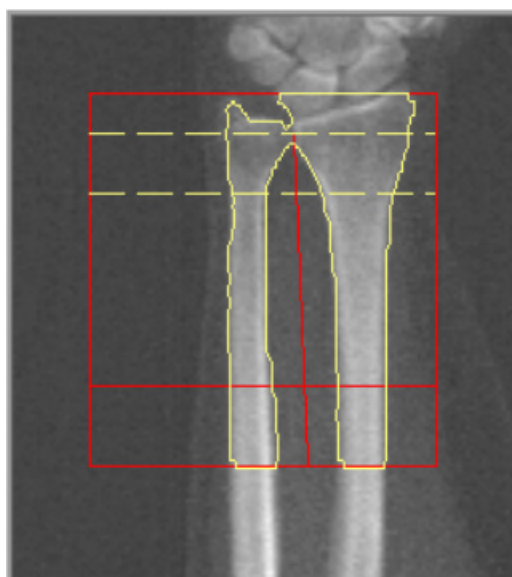


Place blue dotted line at outer edge of bone, just touching.

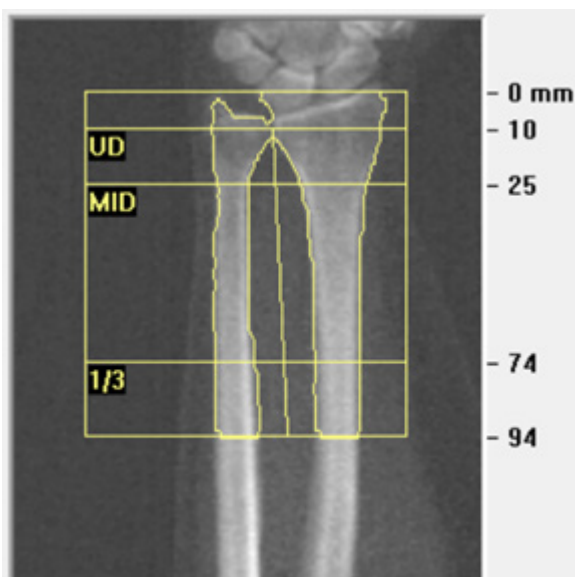


Do not adjust the 1/3 Distal line.

Forearm Analysis Region of Interest



Mid/UD - Place the UD (ultra-distal) region to exclude the end plate of the radius (dense cortical bone) from the UD region.



Properly analyzed forearm