

Quick Reference Guide Whole Body Analysis

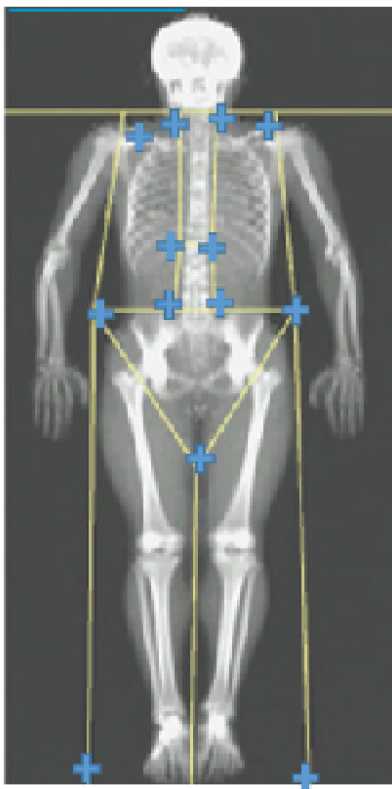
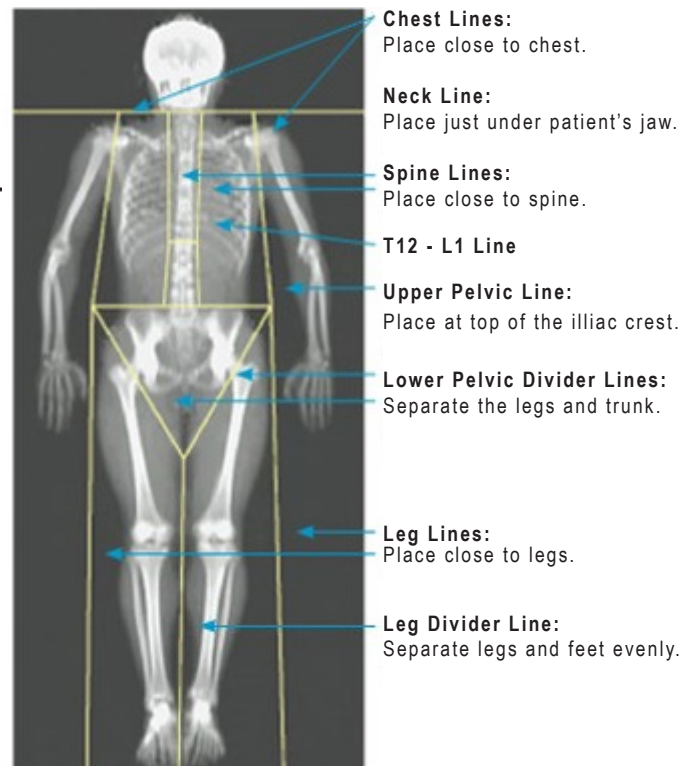
Line Mode

- Place horizontal lines at **Neck, T12-L1, Upper Pelvic, and Lower Pelvic divider lines.**
- Place the vertical lines at **Chest, Spine, Leg, and Leg divider lines.**

If adjustments are required, use the tools in the **Regions Toolbox** to click and drag the lines to their correct positions.

Point Mode

- Starting at shoulders and working downward, place points as shown in image below.
- Hint:** Use mouse to highlight point, then use arrows for adjustments.



Drag the point on the left shoulder, so it is positioned between the head of the humerus and scapula at the glenoid fossa.

Drag the three points along the left side of the spine, matching curvature if possible. Repeat steps for right side of spine.

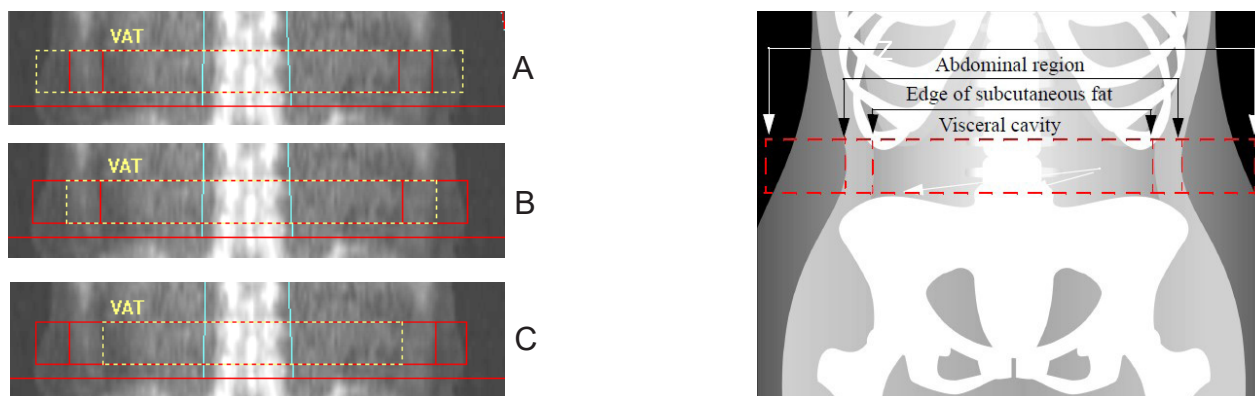
If necessary, drag left point above the iliac crest out at the sides to include soft tissue of the chest and thighs. Repeat for the right side.

Drag the lower point of the triangle below the pelvis to bisect both femoral necks.

Use the scroll bar to scroll the image to the bottom of the scan. Drag the left and right points near the feet, so as to include as much of the soft tissue in the thighs as possible without including the patient's hand and fingers.

Adjusting VAT Regions (if necessary)

Select **A/G Regions** to display area of **Visceral Adipose Tissue (VAT)**. Adjust line placement using the toolbox options **Whole Mode** and **Line Mode**. Three regions are defined as shown in images **A, B, & C**.



Place **Marker A** (outer) to touch the patient's outer skin line.

Place **Marker B** (middle) to touch the outer edge of the abdominal wall (oblique muscle).

Place **Marker C** (inner) to touch the inside edge of the abdominal wall (oblique muscle).

Click **Results** after VAT line placement is complete.

Reference: This document does not replace the user guide. Refer to the Horizon or Discovery User Guide for details.

MAN-06725 Revision 001, January 2020. US/International ©Hologic 2020. All rights reserved. Specifications are subject to change without prior notice. Hologic and associated logos are trademarks and/or registered trademarks of Hologic, Inc., and/or its subsidiaries in the United States and/or other countries. This information is intended for medical professionals in the U.S. and other markets and is not intended as a product solicitation or promotion where such activities are prohibited. Because Hologic materials are distributed through websites, eBroadcasts and tradeshows, it is not always possible to control where such materials appear. For specific information on what products are available for sale in a particular country, please contact your local Hologic representative or write to SkeletalHealth.Support@hologic.com.