

## Aptima® HIV-1 Quant Dx Assay

For *in vitro* diagnostic use

Rx only

<b>General Information</b> .....	<b>3</b>
Intended Use .....	3
Summary and Explanation of the Test .....	3
Principles of the Procedure .....	4
Warnings and Precautions .....	5
Reagent Storage and Handling Requirements .....	8
Specimen Collection and Storage .....	8
Samples Onboard the Panther System .....	12
Specimen Transport .....	12
<b>Panther System</b> .....	<b>13</b>
Reagents and Materials Provided .....	13
Materials Required But Available Separately .....	14
Optional Materials .....	15
Panther System Test Procedure .....	15
Procedural Notes .....	19
<b>Quality Control</b> .....	<b>21</b>
Assay Calibration .....	21
Negative and Positive Controls .....	21
Internal Calibrator/Internal Control .....	21
<b>Interpretation of Results</b> .....	<b>22</b>
<b>Limitations</b> .....	<b>24</b>
<b>Analytical Performance</b> .....	<b>25</b>
Limit of Detection (LoD) Using the 3rd HIV-1 WHO International Standard .....	25
Limit of Detection Across HIV-1 Subtypes and Groups .....	26
Linear Range .....	27
Linearity across HIV-1 Subtypes and Groups .....	27
Determination of the Lower Limit of Quantitation Using the 3rd HIV-1 WHO International Standard .....	28
Verification of LLoQ across HIV-1 Subtypes and Groups .....	30
Precision .....	30
Potentially Interfering Endogenous and Exogenous Substances .....	31
Performance with HIV-1 Negative Specimens .....	33
Potentially Interfering Microbial Contaminants .....	33

Repeatability of Clinical Specimens ..... 34

Sample Dilution Using Specimen Diluent ..... 36

Carryover ..... 36

**Clinical Performance ..... 37**

Validation of Viral Load Quantitation ..... 37

Clinical Specificity Studies ..... 38

Clinical Sensitivity Studies ..... 38

Positivity in Serodiscordant Samples ..... 39

Reproducibility Studies ..... 39

**Bibliography ..... 42**

## General Information

### Intended Use

The Aptima® HIV-1 Quant Dx assay is an *in vitro* nucleic acid amplification test (NAAT) for the detection and quantitation of human immunodeficiency virus type 1 (HIV-1) on the fully automated Panther® system and Panther Fusion® system. It is intended to be used as an aid in diagnosis for HIV-1 infection using appropriate HIV testing algorithms. The presence of HIV-1 nucleic acid in the plasma or serum of individuals without antibodies to HIV-1 is indicative of acute or primary infection.

The Aptima HIV-1 Quant Dx assay may also be used as a supplemental test, when it is reactive, to confirm HIV-1 infection in an individual whose plasma or serum specimen is reactive with an approved assay with an indication as an aid in the diagnosis of HIV-1 infection.

The Aptima HIV-1 Quant Dx assay is intended for use in conjunction with clinical presentation and other laboratory markers for disease prognosis and for use as an aid in monitoring the effects of antiretroviral treatment, as measured by changes in plasma HIV-1 RNA levels. The Aptima HIV-1 Quant Dx assay quantitates HIV-1 RNA groups M, N, and O over the range of 30 to 10,000,000 copies/ mL. One international unit is equivalent to 0.35 copies of HIV-1 RNA for the 3rd HIV-1 WHO International Standard (subtype B, NIBSC code: 10/152).

This assay is not intended to be used as a donor screening test for HIV-1. Performance of this test has not been evaluated for use in pregnant women or in a pediatric population.

### Summary and Explanation of the Test

Epidemiological studies identified human immunodeficiency virus type 1 (HIV-1) as the etiological agent of acquired immunodeficiency syndrome (AIDS) (1-7). HIV can be transmitted by sexual contact, exposure to infected blood or blood products, or through mother-to-child transmission (8). Within 3 to 6 weeks of exposure to HIV, infected individuals generally develop a brief, acute syndrome characterized by flu-like symptoms, and is associated with high levels of viremia in the peripheral blood (9-12). In most infected individuals, this early phase is followed by an HIV-specific immune response and a decline of plasma viremia, usually within 4 to 6 weeks of the onset of symptoms (13-14). After seroconversion, infected individuals typically enter a clinically stable, asymptomatic phase that can last for years (15-17). The asymptomatic period is characterized by persistent, low-level plasma viremia (18) and a gradual depletion of CD4+ T lymphocytes. This depletion leads to severe immunodeficiency, multiple opportunistic infections, malignancies, and death (19). Although levels of virus in the peripheral blood are relatively low during the asymptomatic phase of the infection, virus replication and clearance appear to be dynamic processes in which high rates of virus production and infection of CD4+ cells are balanced by equally high rates of virus clearance, death of infected cells, and replenishment of CD4+ cells, resulting in relatively stable levels of both plasma viremia and CD4+ cells (20-22).

Quantitative measurements of HIV in the peripheral blood have shown that higher virus levels may be correlated with increased risk of clinical progression of HIV-associated

disease, and shown that reductions in plasma virus levels may be associated with decreased risk of clinical progression (23-25). Virus levels in the peripheral blood can be quantitated by measurement of the HIV p24 antigen in serum, by quantitative culture of HIV from plasma, or by direct measurement of viral RNA in plasma using nucleic acid amplification or signal amplification technologies (26-30).

Molecular techniques such as transcription mediated amplification (TMA) have been widely used to amplify nucleic acids (31). TMA uses specific target capture and isothermal amplification to detect nucleic acids in multiple infectious diseases, including CT, NG, HPV, TV, and HIV/HCV/HBV for blood donor testing (32).

The Aptima HIV-1 Quant Dx assay, through TMA, utilizes multiple, long primers that target several regions of the HIV-1 genome in order to compensate for the high mutation rate of HIV-1. The assay includes dual-target amplification and detection systems, targeting two regions of the HIV-1 genome (pol and LTR) independently. The assay software does not average the signals from the two systems.

The Aptima dual-target system is designed to increase the chances of accurately detecting and quantitating samples.

### Principles of the Procedure

The Aptima HIV-1 Quant Dx assay involves three main steps, which all take place in a single tube on the Panther system: target capture, target amplification by transcription-mediated amplification (TMA), and detection of the amplification products (amplicon) by the fluorescent labeled probes (torches).

During target capture, viral nucleic acids are isolated from specimens. The specimen is treated with a detergent to solubilize the viral envelope, denature proteins, and release viral genomic RNA. Capture oligonucleotides hybridize to highly conserved regions of the HIV-1 genome, if present, in the test specimen. The hybridized target is then captured onto magnetic microparticles that are separated from the specimen in a magnetic field. Wash steps remove extraneous components from the reaction tube.

Target amplification occurs via TMA, which is a transcription-mediated nucleic acid amplification method that utilizes two enzymes, Moloney murine leukemia virus (MMLV) reverse transcriptase and T7 RNA polymerase. The reverse transcriptase is used to generate a DNA copy (containing a promoter sequence for T7 RNA polymerase) of the target sequence. T7 RNA polymerase produces multiple copies of RNA amplicon from the DNA copy template. The Aptima HIV-1 Quant Dx assay utilizes the TMA method to amplify two regions of HIV-1 RNA (pol and LTR). An independent signal is generated from amplification of each region using specific primers, which are designed to amplify HIV-1 groups M, N, and O.


Detection is achieved using single-stranded nucleic acid torches that are present during the amplification of each target that hybridize specifically to the amplicons in real-time. Each torch has a fluorophore and a quencher. When the torch is not hybridized to the amplicon, the quencher is in close proximity of the fluorophore and suppresses the fluorescence. When the torch binds to the amplicon, the quencher is moved farther away from the fluorophore and it will emit a signal at a specific wavelength when excited by a light source. As more torches hybridize to amplicon a higher fluorescent signal is generated. The time taken for the fluorescent signal of each target to reach a specified

threshold (“tTime”) is proportional to the starting HIV-1 concentration. Each reaction has an internal calibrator/internal control (IC) that controls for potential variations in specimen processing, amplification, and detection. The concentration of a sample is then calculated using the tTimes for both pol and LTR amplification by the Panther system software. Through its algorithm and comparison with stored calibration information, the Panther system software returns a single, clinically validated result for each sample.

## Warnings and Precautions

- A. For *in vitro* diagnostic use.
- B. For professional use.
- C. The Aptima HIV-1 Quant Dx assay is not intended for use as a screening test for the presence of HIV-1 in donated blood.
- D. To reduce the risk of invalid results, carefully read the entire package insert and the *Panther®/Panther Fusion® System Operator’s Manual* prior to performing this assay.

## Laboratory Related

- E.  CAUTION: The controls for this assay contain human plasma. The plasma is negative for hepatitis B surface antigen (HBsAg), antibodies to HCV, antibodies to HIV-1 and HIV-2, and HIV antigen when tested with US Food and Drug Administration licensed procedures. In addition, the plasma is nonreactive for HCV RNA and HIV-1 RNA when tested with licensed nucleic acid tests using pooled samples. All human blood sourced materials should be considered potentially infectious and should be handled with Universal Precautions (33-35).
- F. Only personnel adequately trained in the use of the Aptima HIV-1 Quant Dx assay and in handling potentially infectious materials should perform this procedure. If a spill occurs, immediately disinfect following appropriate site procedures.
- G. Use only supplied or specified disposable laboratory ware.
- H. Use routine laboratory precautions. Do not pipet by mouth. Do not eat, drink or smoke in designated work areas. Wear disposable, powderless gloves, protective eye wear, and laboratory coats when handling specimens and kit reagents. Wash hands thoroughly after handling specimens and kit reagents.
- I. Work surfaces, pipettes, and other equipment must be regularly decontaminated with 2.5% to 3.5% (0.35 M to 0.5 M) sodium hypochlorite solution.
- J. Dispose of all materials that have come in contact with specimens and reagents according to local, state, and federal regulations (33-36). Thoroughly clean and disinfect all work surfaces.
- K. The controls contain sodium azide as a preservative. Do not use metal tubing for reagent transfer. If solutions containing sodium azide compounds are disposed of in a plumbing system, they should be diluted and flushed with generous amounts of running water. These precautions are recommended to avoid accumulation of deposits in metal piping in which explosive conditions could develop.

- L. Good standard practices for molecular laboratories include environmental monitoring. To monitor a laboratory's environment, the following procedure is suggested.
1. Obtain a cotton-tipped swab and pair with the Aptima Specimen Aliquot Tube (SAT).
  2. Label each SAT appropriately.
  3. Fill each SAT with 1 mL of Aptima Specimen Diluent.
  4. To collect the surface samples, lightly moisten a swab with nuclease free deionized water.
  5. Swab the surface of interest using a top to bottom vertical motion. Rotate the swab approximately one-half turn while swabbing the location.
  6. Immediately place the swab sample into the tube and gently swirl the swab in the diluent to extract potential swabbed materials. Press the swab on the side of the transport tube to extract as much liquid as possible. Discard the swab and cap the tube.
  7. Repeat steps for remaining swab samples.
  8. Test swab with molecular assay.

### Specimen Related

- M. Specimens may be infectious. Use Universal Precautions (33-35) when performing this assay. Proper handling and disposal methods should be established according to local regulations (36). Only personnel adequately trained in the use of the Aptima HIV-1 Quant Dx assay and trained in handling infectious materials should perform this procedure.
- N. Maintain proper storage conditions during specimen shipping to ensure the integrity of the specimen. Specimen stability under shipping conditions other than those recommended has not been evaluated.
- O. Avoid cross-contamination during the specimen handling steps. Be especially careful to avoid contamination by the spread of aerosols when loosening or uncapping specimens. Specimens can contain extremely high levels of organisms. Ensure that specimen containers do not contact one another, and discard used materials without passing over open containers. Change gloves if they come in contact with specimen.

### Assay Related

- P. Quantitative results of the Aptima HIV-1 Quant Dx assay have been evaluated with plasma. Serum may not be used to obtain quantitative results. Qualitative results have been evaluated with both plasma and serum. Use of this test kit with specimens other than those specifically approved for use with this test kit may result in inaccurate test results.
- Q. The Aptima HIV-1 Quant Dx assay was clinically validated using the algorithm in the Panther system software. The validated result to be reported is provided by the Panther system software in the Results screen and Results report.
- R. Do not use the reagent kit, the calibrator, or the controls after the expiration date.
- S. Do not interchange, mix, or combine assay reagents from kits with different master lot numbers. Assay fluids can be from different lot numbers. Controls and the calibrator can be from different lot numbers.
- T. Avoid microbial and nuclease contamination of reagents.

- U. Cap and store all assay reagents at specified temperatures. The performance of the assay may be affected by use of improperly stored assay reagents. See "Reagent Storage and Handling Requirements" on the next page and "Optional Materials" on page 15 for more information.
- V. Do not combine any assay reagents or fluids without specific instruction. Do not top off reagents or fluids. The Panther system verifies reagent levels.
- W. Some reagents in this kit are labeled with safety symbols.

*Note: For information on any hazard and precautionary statements that may be associated with reagents refer to the Safety Data Sheet Library at [www.hologicsds.com](http://www.hologicsds.com). For more information on the symbols, refer to the symbol legend on [www.hologic.com/package-inserts](http://www.hologic.com/package-inserts).*

### US Hazard Information

#### HIV VL Kit Controls

**Sodium Azide 0.2%**

**Human Plasma 95-100%**

#### WARNING

EUH032 - Contact with acids liberates very toxic gas

H302 - Harmful if swallowed.

H312 - Harmful in contact with skin.

H402 - Harmful to aquatic life.

H412 - Harmful to aquatic life with long lasting effects.

P280 - Wear protective gloves/protective clothing/eye protection/face protection.

P301 + P312 - IF SWALLOWED: Call a POISON CENTER or doctor/physician if you feel unwell.

P321 - Specific treatment (see supplemental first aid instructions on this label).

P362 + P364 - Take off contaminated clothing and wash it before reuse.

P302 + P352 - IF ON SKIN: Wash with plenty of soap and water.

P363 - Wash contaminated clothing before reuse.

P501 - Dispose of contents/container in accordance with local/regional/national/international regulation.



## Reagent Storage and Handling Requirements

A. The following table shows the storage conditions and stability for reagents, controls, and calibrator.

Reagent	Unopened Storage	Open Kit (Reconstituted)	
		Storage	Stability
qHIV-1 Amplification Reagent	2°C to 8°C		
qHIV-1 Amplification Reconstitution Solution	2°C to 8°C	2°C to 8°C	30 days <sup>a</sup>
qHIV-1 Enzyme Reagent	2°C to 8°C		
qHIV-1 Enzyme Reconstitution Solution	2°C to 8°C	2°C to 8°C	30 days <sup>a</sup>
qHIV-1 Promoter Reagent	2°C to 8°C		
qHIV-1 Promoter Reconstitution Solution	2°C to 8°C	2°C to 8°C	30 days <sup>a</sup>
qHIV-1 Target Capture Reagent	2°C to 8°C	2°C to 8°C	30 days <sup>a</sup>
qHIV-1 NC CONTROL – (Negative Control)	-15°C to -35°C	15°C to 30°C	Single use vial Use within 20 hours
qHIV-1 LPC CONTROL + (Low Positive Control)	-15°C to -35°C	15°C to 30°C	Single use vial Use within 20 hours
qHIV-1 HPC CONTROL + (High Positive Control)	-15°C to -35°C	15°C to 30°C	Single use vial Use within 20 hours
qHIV-1 PCAL (Positive Calibrator)	-15°C to -35°C	15°C to 30°C	Single use vial Use within 20 hours

<sup>a</sup> When reagents are removed from the Panther system, they should be immediately returned to their appropriate storage temperatures.

- B. Discard any unused reconstituted reagents and target capture reagent (TCR) after 30 days or after the Master Lot expiration date, whichever comes first.
- C. Reagents stored onboard the Panther system have 72 hours of onboard stability. Reagents can be loaded onto the Panther system up to 8 times. The Panther system logs each time the reagents are loaded.
- D. After thawing the calibrator, the solution must be clear, i.e., not cloudy or have precipitates.
- E. ⚠ The Promoter Reagent and reconstituted Promoter Reagent are photosensitive. Protect these reagents from light during storage and preparation for use.

## Specimen Collection and Storage

*Note: Handle all specimens as if they contain potentially infectious agents. Use Universal Precautions.*

*Note: Take care to avoid cross-contamination during sample handling steps. For example, discard used material without passing over open tubes.*

*Note: Only plastic secondary tubes are recommended for storage.*



Whole blood specimens collected in the following glass or plastic tubes may be used:

For quantitative measurements:

- Tubes containing EDTA or Acid Citrate Dextrose (ACD) anticoagulants or
- Plasma Preparation Tubes (PPTs).

For qualitative determination:

- Tubes containing EDTA or ACD anticoagulants, or
- PPTs, or
- Serum tubes, or
- Serum separator tubes (SSTs).

For serum, allow the clot to form before further processing.

#### A. Specimen Collection

Whole blood can be stored at 2°C to 30°C and must be centrifuged within 24 hours of specimen collection. Separate the plasma or serum from the pelleted red blood cells following the manufacturer's instructions for the tube used. Plasma or serum can be tested on the Panther system in a primary tube or transferred to a secondary tube. To obtain the 500 µL reaction volume, the minimum volume of plasma or serum for primary collection tubes is up to 1200 µL and for secondary tubes, the minimum volume is 700 µL.

The following table identifies dead volume requirements for each primary and secondary tube type:

Tube (Size and Type)	Dead Volume on Panther System
Aptima Sample Aliquot Tube (SAT)	0.2 mL
12x75 mm	0.5 mL
13x100 mm	0.5 mL
13x100 mm with Gel	0.3 mL
16x100 mm with Gel	0.7 mL

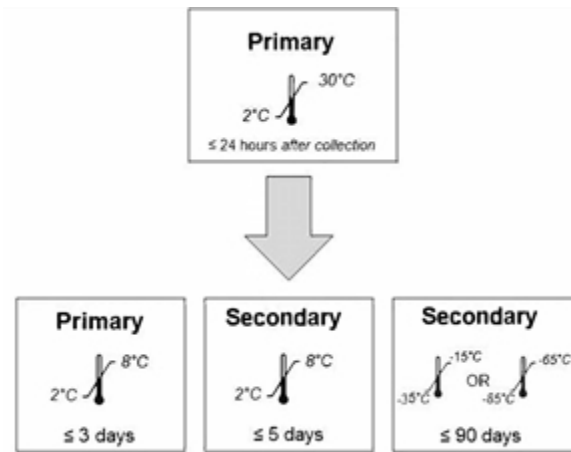
If not tested immediately, plasma or serum can be stored in accordance with the specifications below. If transferred to a secondary tube, plasma may be frozen at -20°C or -70°C and serum may be frozen at -20°C. Do not exceed three freeze–thaw cycles to avoid affecting the result. Do not freeze specimens in EDTA, ACD, or serum primary collection tubes.

#### B. Specimen Storage Conditions

##### 1. EDTA and ACD Plasma Specimens

For up to 24 hours after specimen collection, primary tubes containing centrifuged plasma may be stored at 2°C to 30°C (Figure 1, upper box). After 24 hours, plasma may be stored for a longer period of time under one of the following conditions (Figure 1, lower boxes):

- In the primary collection tube at 2°C to 8°C for up to 3 days,
- In the secondary tube at 2°C to 8°C for up to 5 days, or
- In the secondary tube at -20°C or -70°C for up to 90 days.

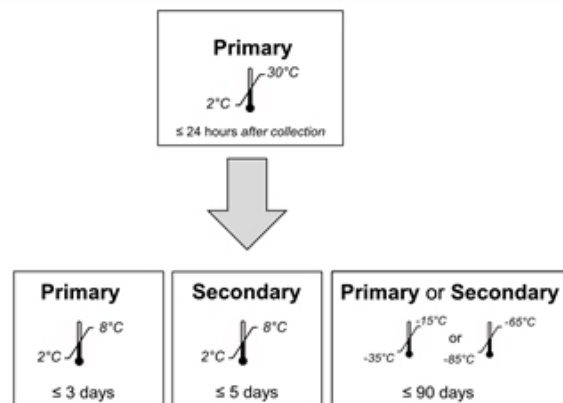


**Figure 1. Storage Conditions for EDTA/ACD Tubes**

## 2. PPT Specimens

For up to 24 hours after specimen collection, PPTs containing centrifuged plasma may be stored at 2°C to 30°C (Figure 2, upper box). After 24 hours, plasma may be stored for a longer period of time under one of the following conditions (Figure 2, lower boxes):

- In the PPT at 2°C to 8°C for up to 3 days,
- In the secondary tube at 2°C to 8°C for up to 5 days, or
- In the PPT or secondary tube at -20°C or -70°C for up to 90 days.

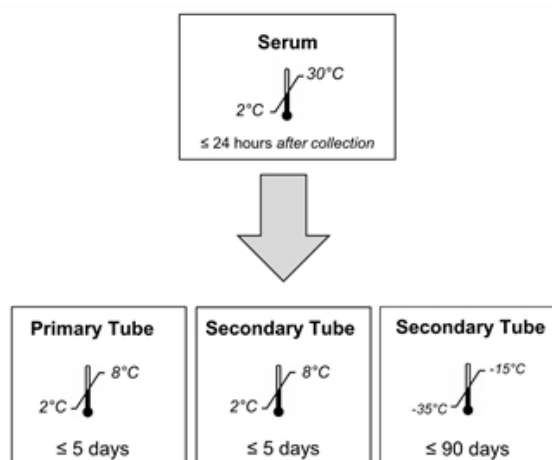


**Figure 2. Storage Conditions for PPTs**

## 3. Serum Tube Specimens

For up to 24 hours after specimen collection, serum tubes containing centrifuged serum may be stored at 2°C to 30°C (Figure 3, upper box). After 24 hours, serum may be stored for a longer period of time under one of the following conditions (Figure 3, lower boxes):

- In the serum tube at 2°C to 8°C for up to 5 days,
- In the secondary tube at 2°C to 8°C for up to 5 days, or
- In the secondary tube at -20°C for up to 90 days.

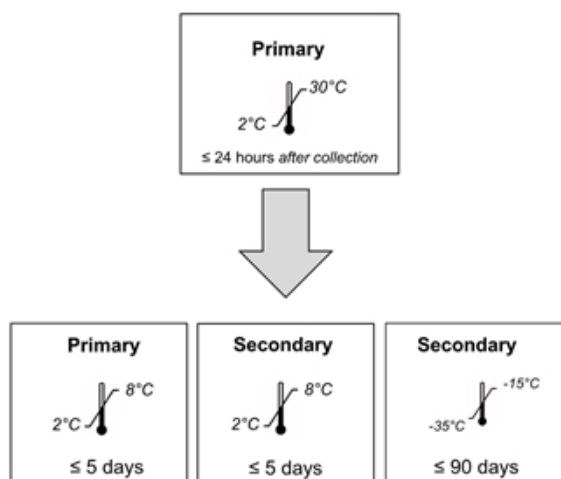


**Figure 3. Storage Conditions for Serum Tubes**

#### 4. SST Specimens

For up to 24 hours after specimen collection, SSTs containing centrifuged serum may be stored at 2°C to 30°C (Figure 4, upper box). After 24 hours, serum may be stored for a longer period of time under one of the following conditions (Figure 4, lower boxes):

- In the SST at 2°C to 8°C for up to 5 days,
- In the secondary tube at 2°C to 8°C for up to 5 days, or
- In the secondary tube at -20°C for up to 90 days.



**Figure 4. Storage Conditions SSTs**

#### C. Dilution of Plasma Specimens

*Note: A plasma specimen may be diluted in the SAT or secondary tube for testing on the Panther system. See Panther System Test Procedure, Step E.6 for more information.*

*Note: If a specimen is diluted, it should be tested immediately after dilution. Do not freeze a diluted specimen.*

**⚠ Note: Dilution of plasma specimens may only be used for quantitative results. Do not dilute plasma samples for diagnostic results.**

**Samples Onboard the Panther System**

Samples may be left on the Panther system uncapped for up to a total of 8 hours. Samples may be removed from the Panther system and tested as long as the total time onboard does not exceed 8 hours prior to the pipetting of the sample by the Panther system.

**Specimen Transport**

Maintain sample storage conditions as described in Specimen Collection and Storage.

*Note: Specimens must be shipped in accordance with applicable national, international, and regional transportation regulations.*

## Panther System

Reagents for the Aptima HIV-1 Quant Dx assay are listed below for the Panther system. Reagent Identification Symbols are also listed next to the reagent name.

### Reagents and Materials Provided

**Aptima HIV-1 Quant Dx Assay Kit**, 100 tests, Cat. No. PRD-03565 (1 assay kit, 1 calibrator kit, and 1 controls kit)

Additional calibrators and controls may be ordered separately. See respective catalog numbers below.

#### Aptima HIV-1 Quant Dx Assay Kit

(store at 2°C to 8°C upon receipt)

Symbol	Component	Quantity
<b>A</b>	<b>qHIV-1 Amplification Reagent</b> <i>Non-infectious nucleic acids dried in buffered solution.</i>	1 vial
<b>E</b>	<b>qHIV-1 Enzyme Reagent</b> <i>Reverse transcriptase and RNA polymerase dried in HEPES buffered solution.</i>	1 vial
<b>PRO</b>	<b>qHIV-1 Promoter Reagent</b> <i>Non-infectious nucleic acids dried in buffered solution.</i>	1 vial
<b>AR</b>	<b>qHIV-1 Amplification Reconstitution Solution</b> <i>Aqueous solution containing glycerol and preservatives.</i>	1 x 7.2 mL
<b>ER</b>	<b>qHIV-1 Enzyme Reconstitution Solution</b> <i>HEPES buffered solution containing a surfactant and glycerol.</i>	1 x 5.8 mL
<b>PROR</b>	<b>qHIV-1 Promoter Reconstitution Solution</b> <i>Aqueous solution containing glycerol and preservatives.</i>	1 x 4.5 mL
<b>TCR</b>	<b>qHIV-1 Target Capture Reagent</b> <i>Nucleic acids in a buffered salt solution containing solid phase, non-infectious nucleic acids, and Internal Calibrator.</i>	1 x 72.0 mL
	<b>Reconstitution Collars</b>	3
	<b>Master Lot Barcode Sheet</b>	1 sheet

#### Aptima HIV-1 Quant Dx Calibrator Kit (Cat. No. PRD-03566)

(store at -15°C to -35°C upon receipt)

Symbol	Component	Quantity
<b>PCAL</b>	<b>qHIV-1 Positive Calibrator</b> <i>Transcript in buffered solution.</i>	5 x 2.5 mL
	<b>Calibrator Barcode Label</b>	—

**Aptima HIV-1 Quant Dx Controls Kit (Cat. No. PRD-03567)**

(store at -15°C to -35°C upon receipt)

Symbol	Component	Quantity
NC	<b>qHIV-1 Negative Control</b> <i>HIV-1 negative defibrinated human plasma containing gentamicin and 0.2% sodium azide as preservatives.</i>	5 x 1.5 mL
LPC	<b>qHIV-1 Low Positive Control</b> <i>Non-infectious HIV-1 Armored RNA in defibrinated human plasma containing gentamicin and 0.2% sodium azide as preservatives.</i>	5 x 1.5 mL
HPC	<b>qHIV-1 High Positive Control</b> <i>Non-infectious HIV-1 Armored RNA in defibrinated human plasma containing gentamicin and 0.2% sodium azide as preservatives.</i>	5 x 1.5 mL
	<b>Control Barcode Label</b>	—

**Materials Required But Available Separately**

*Note: Materials available from Hologic have catalog numbers listed, unless otherwise specified.*

Material	Cat. No.
Panther® System	303095
Panther Fusion® System	PRD-04172
Panther® System Continuous Fluids and Waste (Panther Plus)	PRD-06067
Aptima® HIV-1 Quant Dx Calibrator Kit	PRD-03566
Aptima® HIV-1 Quant Dx Controls Kit	PRD-03567
Panther® Run Kit for Real Time Assays (for real time assays only)	PRD-03455 (5000 tests)
<i>Aptima Assay Fluids Kit (also known as Universal Fluids kit) contains Aptima Wash Solution, Aptima Buffer for Deactivation Fluid, and Aptima Oil Reagent</i>	303014 (1000 tests)
<i>Multi-tube units (MTUs)</i>	104772-02
<i>Panther® Waste Bag Kit</i>	902731
<i>Panther® Waste Bin Cover</i>	504405
Or, Panther® System Run Kit	
<i>When running non-real time-TMA assays in parallel with real time-TMA assays Contains MTUs, waste bags, waste bin covers, auto detect, and assay fluids</i>	303096 (5000 tests)
	901121 (10612513 Tecan)
Tips, 1000 µL, filtered, conductive, liquid sensing, and disposable	903031 (10612513 Tecan)
<i>Not all products are available in all regions. Contact your representative for region- specific information</i>	MME-04134 (30180117 Tecan)
	MME-04128
Bleach, 5% to 8.25% (0.7 M to 1.16 M) sodium hypochlorite solution	—
Disposable, powderless gloves	—
Reagent replacement caps	
<i>Amplification, Enzyme, and Promoter reagent reconstitution bottles</i>	CL0041 (100 caps)
<i>TCR bottle</i>	CL0040 (100 caps)
Plastic-backed laboratory bench covers	—
Lint-free wipes	—

Material	Cat. No.
Pipettor	—
Tips	—
Primary collection tube (EDTA, ACD, PPT, SST, Serum) options:	
13 mm x 100 mm	—
13 mm x 75 mm	—
16 mm x 100 mm	—
Centrifuge	—
Vortex mixer	—

## Optional Materials

Material	Cat. No.
Secondary tube options:	
12 mm x 75 mm	—
13 mm x 100 mm	—
16 mm x 100 mm	—
Aptima Specimen Aliquot Tubes (SATs) (100 pack)	FAB-18184
Transport Tube Cap (100 pack)	
cap for SAT	504415
Aptima Specimen Diluent	PRD-03503
Aptima Specimen Diluent Kit	
contains specimen diluent, 100 SATs, and 100 caps	PRD-03654
Transfer pipets	—
Commercially available panels, for example:	
HIV-1 from Quality Control for Molecular Diagnostics (QCMD) or	
College of American Pathologists (CAP) HIV viral load survey panel or	—
SeraCare ACCURUN HIV Panels	
Cotton-tipped swabs	—
Tube rocker	PRD-03488

## Panther System Test Procedure

*Note: See the Panther/Panther Fusion System Operator's Manual for additional procedural information.*

### A. Work Area Preparation

1. Clean work surfaces where reagents will be prepared. Wipe down work surfaces with 2.5% to 3.5% (0.35 M to 0.5 M) sodium hypochlorite solution. Allow the sodium hypochlorite solution to contact surfaces for at least 1 minute and then follow with a deionized (DI) water rinse. Do not allow the sodium hypochlorite solution to dry. Cover the bench surface on which the reagents and samples will be prepared with clean, plastic-backed absorbent laboratory bench covers.
2. Clean a separate work surface where samples will be prepared. Use the procedure described above (Step A.1).
3. Clean any pipettors. Use the procedure described above (Step A.1).

**B. Calibrator and Controls Preparation**

Allow the calibrator and controls to reach 15°C to 30°C prior to processing as follows:

1. Remove the calibrator and controls from storage (-15°C to -35°C) and place at 15°C to 30°C. Throughout the thawing process, gently invert each tube to mix thoroughly. Ensure tube contents are fully thawed prior to use.

**Option.** Calibrator and control tubes may be placed on a tube rocker to mix thoroughly. Ensure tube contents are fully thawed prior to use.

*Note: Avoid creating excessive foam when inverting the calibrator and controls. Foam compromises the level-sensing by the Panther system.*

2. When the tube contents have thawed, dry the outside of the tube with a clean, dry disposable wipe.
3. To prevent contamination, do not open the tubes at this time.

**C. Reagent Reconstitution/Preparation of a New Kit**

*Note: Reconstitution of reagents should be performed prior to beginning any work on the Panther system.*

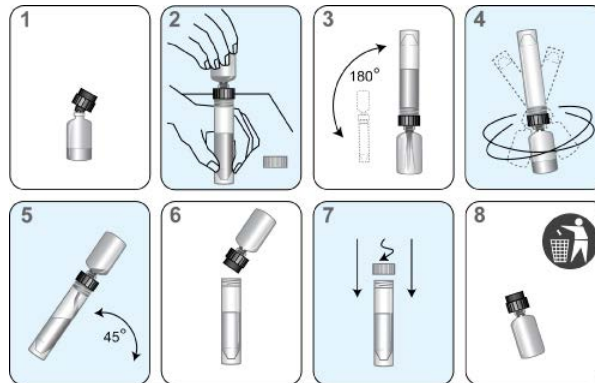
1. To prepare Target Capture Reagent (TCR), perform the following:
  - a. Remove the TCR from storage (2°C to 8°C). Check the lot number on the TCR bottle to make sure that it matches the lot number on the Master Lot Barcode Sheet.
  - b. Immediately shake the TCR bottle vigorously 10 times. Allow the TCR bottle to remain at 15°C to 30°C to warm for at least 45 minutes. During this period, swirl and invert the TCR bottle at least every 10 minutes.

**Option.** The TCR bottle may be prepared on a tube rocker by following these instructions: Remove the TCR from storage (2°C to 8°C) and immediately shake vigorously 10 times. Place the TCR bottle on a tube rocker and leave the TCR at 15°C to 30°C to warm for at least 45 minutes.
  - c. Ensure all precipitate is in solution and the magnetic particles are suspended before use.
2. To reconstitute Amplification, Enzyme, and Promoter Reagents, perform the following:
  - a. Remove the lyophilized reagents and corresponding reconstitution solutions from storage (2°C to 8°C). Pair each reconstitution solution with its lyophilized reagent.
  - b. Ensure that the reconstitution solution and lyophilized reagent have matching label colors. Check the lot numbers on the Master Lot Barcode Sheet to ensure that the appropriate reagents are paired.
    - i. Open the lyophilized reagent vial by removing the metallic seal and rubber stopper.
    - ii. Firmly insert the notched end of the reconstitution collar (black) onto the vial (Figure 5, Step 1).
    - iii. Open the matching reconstitution solution bottle, and set the cap on a clean, covered work surface.
    - iv. Place the reconstitution solution bottle on a stable surface (i.e., bench). Then, invert the lyophilized reagent vial over the reconstitution solution bottle and firmly attach the collar to the reconstitution solution bottle (Figure 5, Step 2).
    - v. Slowly invert the assembled bottles (vial attached to solution bottle) to allow the solution to drain into the glass vial (Figure 5, Step 3).



- vi. Pick up the assembled bottles, and swirl the assembled bottles for at least 10 seconds (Figure 5, Step 4).
- vii. Wait for at least 30 minutes for the lyophilized reagent to go into solution.
- viii. After the lyophilized reagent has gone into solution, swirl the assembled bottles for at least 10 seconds and then slightly rock the solution within the glass vial back and forth to mix thoroughly.
- c. Slowly tilt the assembled bottles again to allow all of the solution to drain back into the reconstitution solution bottle (Figure 5, Step 5).
- d. Carefully remove the reconstitution collar and glass vial (Figure 5, Step 6).
- e. Recap the bottle. Record operator initials and reconstitution date on the label (Figure 5, Step 7).
- f. Discard the reconstitution collar and glass vial (Figure 5, Step 8).

**Warning:** Avoid creating excessive foam when reconstituting reagents. Foam compromises the level-sensing by the Panther system.



**Figure 5. Reagent Reconstitution Process**

#### D. Reagent Preparation for Previously Prepared Reagents

1. Remove the previously prepared reagents from storage (2°C to 8°C).
2. Previously prepared Amplification, Enzyme, Promoter reagents, and TCR must reach 15°C to 30°C prior to the start of the assay.
3. For previously prepared TCR, perform Step C.1 above prior to loading on the system.
4. Swirl and invert the Amplification, Enzyme, and Promoter reagents to mix thoroughly prior to loading on the system. Avoid creating excessive foam when inverting reagents.

**Option.** The previously prepared reagents may be prepared on a tube rocker by following these instructions: Remove reagents from storage (2°C to 8°C). Place the reagents on a tube rocker and leave at 15°C to 30°C to warm for at least 30 minutes.


5. Do not top off reagent bottles. The Panther system will recognize and reject bottles that have been topped off.

#### E. Specimen Handling

1. Ensure that processed specimens in primary tubes or undiluted specimens in secondary tubes have been stored properly per “Specimen Collection and Storage” on page 8.

2. Ensure frozen specimens are thoroughly thawed. Vortex the thawed specimens for 3 to 5 seconds to mix thoroughly.
3. Allow the specimens to reach 15°C to 30°C prior to processing. See Samples Onboard the Panther System for additional onboard information.
4. Ensure that each primary collection tube contains up to 1200 µL of specimen or each SAT contains at least 700 µL of specimen. Refer to the table provided in “Specimen Collection and Storage” to identify dead volume requirements for each primary and secondary tube type. If specimen dilution is necessary, see Step E.5 below for additional information.
5. Dilute a plasma specimen 1:3 in the SAT or 1:100 in a secondary tube.

A plasma specimen may be diluted in a secondary tube for testing on the Panther system.

 *Dilution of plasma specimens may only be used for quantitative results. Do not dilute plasma samples for diagnostic results.*

*Note: If a specimen is diluted, it must be tested immediately after dilution.*

a. Dilution of low-volume specimens

The volume of plasma specimens may be increased to the minimum volume required (700 µL) using Aptima Specimen Diluent. Specimens with at least 240 µL of plasma may be diluted with two parts specimen diluent (1:3) as follows:

- i. Place 240 µL of specimen in the SAT.
- ii. Add 480 µL of Aptima Specimen Diluent.
- iii. Cap the tube.
- iv. Gently invert 5 times to mix.

Specimens diluted 1:3 can be tested using the 1:3 option on the Panther system (see the *Panther/Panther Fusion System Operator's Manual* for more information). The software will automatically report the neat result by applying the dilution factor. These specimens will be flagged as diluted specimens.

b. Dilution of high-titer specimens

If a specimen's result is above the upper limit of quantitation, it may be diluted with 99 parts of Aptima Specimen Diluent (1:100) as follows:

- i. Place 30 µL of specimen in the SAT or secondary tube.
- ii. Add 2970 µL of Aptima Specimen Diluent.
- iii. Cap the tube.
- iv. Gently invert 5 times to mix.

Specimens diluted 1:100 can be tested using the 1:100 option on the Panther system (see *Panther/Panther Fusion System Operator's Manual* for more information). The software will automatically report the neat result by applying the dilution factor. These specimens will be flagged as diluted specimens.

*Note: For diluted specimens with neat concentrations greater than the ULoQ, results will be reported using scientific notation.*

6. Just prior to loading specimens into a Sample Rack, centrifuge each specimen at 1000 to 3000g for 10 minutes. Do not remove caps. Bubbles in the tube can compromise the level-sensing by the Panther system.

See System Preparation, Step F.2 below, for information about loading the rack and removing the caps.

#### F. System Preparation

1. Set up the system according to the instructions in the *Panther/Panther Fusion System Operator's Manual* and Procedural Notes. Make sure that the appropriately sized reagent racks and TCR adapters are used.
2. Load samples into the Sample Rack. Perform the following steps for each sample tube (specimen, and, when necessary, calibrator and controls):
  - a. Loosen one sample tube cap, but do not remove it yet.  
*Note: Be especially careful to avoid contamination by the spread of aerosols. Gently loosen caps on samples.*
  - b. Load the sample tube into the Sample Rack.
  - c. Repeat Steps a and b for each remaining sample.
  - d. After the samples have been loaded into the Sample Rack, remove and discard each sample tube cap in one Sample Rack. To avoid contamination, do not pass a cap over any other Sample Racks or sample tubes.
  - e. If necessary, use a new, disposable transfer pipet to remove any bubbles or foam.
  - f. When the last cap has been removed, load a Sample Rack into a Sample Bay.  
*Note: If running other assays and sample types at the same time, secure the Sample Retainer prior to loading the Sample Rack into the Sample Bay.*
  - g. Repeat Steps a to f for the next Sample Rack.

### Procedural Notes

#### A. Calibrator and Controls

1. The qHIV-1 positive calibrator, qHIV-1 low positive control, qHIV-1 high positive control, and qHIV-1 negative control tubes can be loaded in any position in the Sample Rack and in any Sample Bay Lane on the Panther system. Specimen pipetting will begin when one of the following two conditions has been met:
  - a. The calibrator and controls are currently being processed by the system.
  - b. Valid results for the calibrator and controls are registered on the system.
2. Once the calibrator and control tubes have been pipetted and are processing for the Aptima HIV-1 Quant Dx assay reagent kit, specimens can be tested with the associated, reconstituted kit for up to 24 hours **unless**:
  - a. The calibrator or control results are invalid.
  - b. The associated assay reagent kit is removed from the system.
  - c. The associated assay reagent kit has exceeded stability limits.
3. The calibrator and each control tube can be used once. Attempts to use the tube more than once can lead to processing errors.

#### B. Glove Powder

As in any reagent system, excess powder on some gloves may cause contamination of opened tubes. Powderless gloves are recommended.

## Quality Control

A run or specimen result may be invalidated by an operator if technical, operator, or instrument difficulties are observed while performing the assay and they are documented. In this case, specimens must be retested.

### Assay Calibration

To generate valid results, an assay calibration must be completed. A single positive calibrator is run in triplicate each time a reagent kit is loaded on the Panther system. Once established, the calibration is valid for up to 24 hours. Software on the Panther system alerts the operator when a calibration is required. The operator scans a calibration coefficient found on the Master Lot Barcode Sheet provided with each reagent kit.

During processing, criteria for acceptance of the calibrator are automatically verified by the software on the Panther system. If less than two of the calibrator replicates is valid, the software automatically invalidates the run. Samples in an invalidated run must be retested using a freshly prepared calibrator and freshly prepared controls.

### Negative and Positive Controls

To generate valid results, a set of assay controls must be tested. One each replicate of the negative control, of the low positive control, and of the high positive control must be tested each time a reagent kit is loaded on the Panther system. Once established, the controls are valid for up to 24 hours. Software on the Panther system alerts the operator when controls are required.

During processing, criteria for acceptance of controls are automatically verified by software on the Panther system. To generate valid results, the negative control must give a result of "Not Detected" and the positive controls must give results within predefined parameters (LPC Target: ~ 3 Log<sub>10</sub> copies/mL, HPC Target: ~ 5 Log<sub>10</sub> copies/mL). If any one of the controls has an invalid result, the software automatically invalidates the run. Samples in an invalidated run must be retested using a freshly prepared calibrator and freshly prepared controls.

### Internal Calibrator/Internal Control

Each sample contains an internal calibrator/internal control (IC). During processing, IC acceptance criteria are automatically verified by the Panther system software. If an IC result is invalid, the sample result is invalidated. Every sample with an invalid IC result must be retested to obtain a valid result. The Panther system software is designed to accurately verify processes when procedures are performed following the instructions provided in this package insert and the *Panther/Panther Fusion System Operator's Manual*.

## Interpretation of Results

*Note: Quantitative results of the Aptima HIV-1 Quant Dx assay have been evaluated with plasma. Serum may not be used to obtain quantitative results. Qualitative results have been evaluated with both plasma and serum.*

The Panther® system automatically determines the concentration of HIV-1 RNA for specimens and controls by comparing the results to a calibration curve. HIV-1 RNA concentrations are reported in copies/mL and log<sub>10</sub> copies/mL. The interpretation of results is provided in Table 1. The Aptima HIV-1 Quant Dx assay has dual-target amplification and detection systems, targeting pol and LTR independently. The result reported by the system will be based on the primary system, pol, unless pol is not amplified. In these cases, the system will report the result from the secondary system, LTR.

If the 1:3 or 1:100 dilution is used for diluted specimens, the Panther system automatically calculates the HIV-1 concentration for the neat specimen by multiplying the diluted concentration by the dilution factor and diluted samples are flagged as diluted.

*Note: For diluted specimens, results listed as "Not Detected" or "<30 detected" may be generated by diluting a specimen with a concentration above, but close to the LoD (limit of detection) or LLoQ (lower limit of quantitation). It is recommended to collect and test another neat specimen if a quantitative result is not obtained.*

The Panther system does not provide a qualitative result (i.e., "Reactive" or "Non-reactive") for diagnostic use. The operator must interpret the reported HIV-1 RNA concentration into a qualitative result (Table 1). Specimens with results listed as "Not Detected" are nonreactive for HIV-1 RNA. Specimens with results listed as "<30 detected" or specimens with results listed within and above the linear range indicate HIV-1 RNA was detected and these specimens are reactive for HIV-1 RNA.

Table 1: Result Interpretation

Reported Aptima HIV-1 Quant Dx Assay Result		HIV-1 RNA Concentration Interpretation	User's Diagnostic Qualitative Interpretation <sup>c</sup>
Copies /mL <sup>a</sup>	Log <sub>10</sub> Value <sup>b</sup>		
Not Detected	Not Detected	HIV-1 RNA not detected.	Non-reactive for HIV-1 RNA
<30 detected	<1.47	HIV-1 RNA is detected but at a level below the LLoQ.	Reactive for HIV-1 RNA
30 to 10,000,000	1.47 to 7.00	HIV-1 RNA concentration is within the linear range of 30 to 10,000,000 copies/mL.	Reactive for HIV-1 RNA
>10,000,000	>7.00	HIV-1 RNA concentration is above the upper limit of quantitation (ULoQ).	Reactive for HIV-1 RNA
Invalid <sup>d</sup>	Invalid <sup>d</sup>	There was an error in the generation of the result. Specimen should be retested.	Invalid <sup>d</sup>

<sup>a</sup> The conversion factor for copies to International Units (IU) for the 3rd International Standard for HIV-1 RNA (10/152) is 0.35 copies/IU.

<sup>b</sup> Value is truncated to two decimal places.

<sup>c</sup> A diagnostic interpretation should not be made from a "non-reactive" result for specimens that have been diluted. Obtain a new undiluted specimen and retest.

<sup>d</sup> Invalid results are displayed in blue-colored font.

After results are available in the Results screen, the quantitation value for each target can be accessed using the Sample Curve Report feature in the Panther system software. To view the values and amplification curves, select Sample ID for the sample in the Results screen of the Panther system software. Then select the "Curve Data" button. A window opens containing the Sample Curve Report, which includes fluorescence profiles and quantitation values for the sample.

*Note: Data obtained from the Sample Curve Report are provided for information only (e.g., troubleshooting and curve verification). The validated result to be reported for the sample is provided by the Panther system software in the Results screen and Results report.*

*Note: Refer to the Panther/Panther Fusion System Operator's Manual for additional instructions regarding operation of the Panther system.*

The acceptance criteria for each of the Aptima HIV-1 Quant Dx assay controls are outlined in Table 2.

*Note: The recovery range listed below shifts based on the assigned value of each specific lot. Refer to the assigned concentration listed on the Control Barcode Sheet insert provided with each Control box.*

*Table 2: Acceptance Criteria for Recovery Range for Aptima HIV Quant Dx Assay*

<b>Component</b>	<b>Recovery Range for Valid Runs</b>
<b>Negative Control</b>	N/A
<b>Low Positive Control</b>	+/- 0.5 log <sub>10</sub> copies/mL
<b>High Positive Control</b>	+/- 0.5 log <sub>10</sub> copies/mL

## Limitations

- A. Use of this assay is limited to personnel who have been trained in the procedure. Failure to follow the instructions given in this package insert may result in erroneous results.
- B. Reliable results are dependent on adequate specimen collection, transport, storage, and processing.
- C. This assay has been validated for use as a quantitative assay with only plasma.
- D. This assay has been validated for use as a qualitative assay with plasma and serum.
- E. Though rare, mutations within the highly conserved regions of the viral genome covered by the primers and/or probes in the Aptima HIV-1 Quant Dx assay may result in underquantification of or failure to detect the virus.
- F. Individuals undergoing Anti-retroviral therapy (ART) or taking pre-exposure prophylaxis (PrEP) or Post exposure prophylaxis (PEP) may produce non-reactive results due to a suppressed viral load.
- G. Non-reactive NAT result does not exclude the possibility of infection with HIV. A comprehensive risk history and clinical judgement should be considered before concluding that an individual is not infected with HIV.
- H. False positive results may be obtained due to cross contamination.
- I. This assay has not been validated for use in patients undergoing lentiviral vector-based CAR-T therapies. Potentially overlapping regions of the viral genome covered by the primers and/or probes in the Aptima HIV-1 Quant Dx assay may result in amplification of lentiviral vectors used in CAR-T cell therapy.



## Analytical Performance

### Limit of Detection (LoD) Using the 3rd HIV-1 WHO International Standard

The limit of detection (LoD) is defined as the concentration of HIV-1 RNA that is detected at 95% or greater probability according to CLSI EP17-A2 (37). The LoD was determined by testing panels that consisted of dilutions of the 3rd HIV-1 WHO International Standard (subtype B, NIBSC code: 10/152) in HIV-1 negative EDTA plasma and serum. Thirty replicates of each dilution were run on three Panther systems using three reagent lots for a total of 90 replicates for each dilution. Per CLSI EP17-A2, the LoDs were defined using the results from the reagent lot with the highest concentration for the predicted detection limit LoD and are shown in Table 3. Through Probit analysis, the 95% predicted detection limit for LoD for the Aptima HIV-1 Quant Dx assay is 12 copies/mL (35 IU/mL) in plasma and 8.9 copies/mL (25 IU/mL) in serum (0.35 copies=1 IU).

Table 3: Limit of Detection of the Aptima HIV-1 Quant Dx Assay Using the 3<sup>rd</sup> HIV-1 WHO International Standard

Predicted Detection Limit	Plasma		Serum	
	Concentration (copies/mL)	Concentration (IU/mL)	Concentration (copies/mL)	Concentration (IU/mL)
10%	1.2	3.3	0.8	2.2
20%	1.6	4.6	1.1	3.1
30%	2.0	5.7	1.4	4.0
40%	2.5	7.2	1.7	4.9
50%	3.1	8.8	2.1	5.9
60%	3.8	11	2.5	7.2
70%	4.8	14	3.1	8.9
80%	6.2	18	4.0	11
90%	9.0	26	5.8	17
95%	12.1	35	8.9	26

### Limit of Detection Across HIV-1 Subtypes and Groups

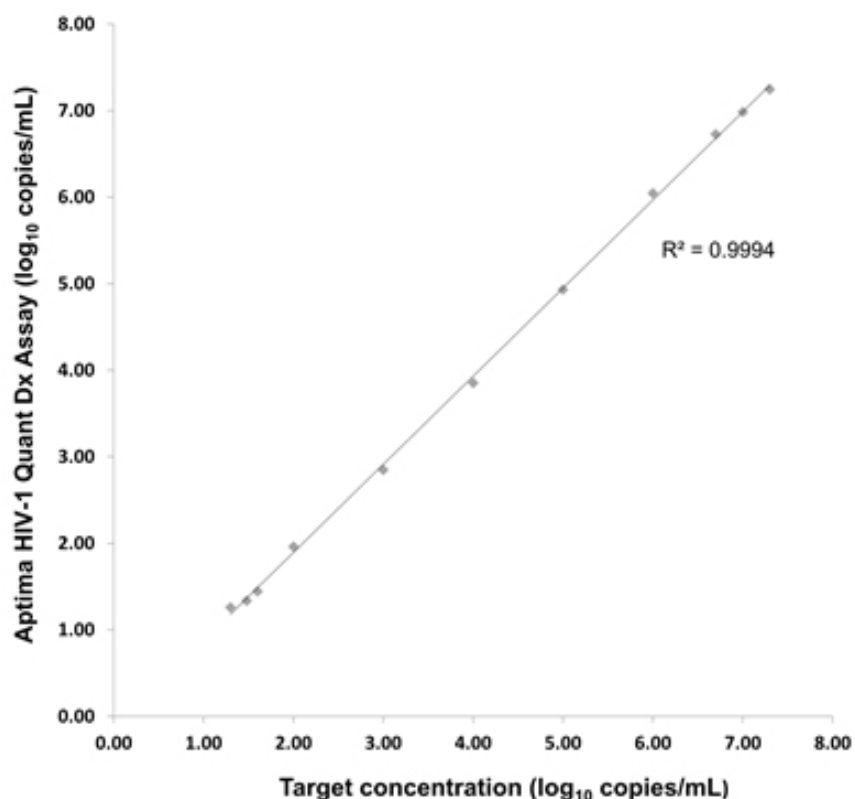
For HIV-1 group M (subtypes A, C, D, F, G, CRF01\_AE, CRF02\_AG) and groups N and O, six positive panels and one negative panel were created by spiking either cultured HIV-1 virus or positive clinical specimens into HIV-1 negative human EDTA plasma and serum (0 to 40 copies/mL). Each panel member was tested in 30 replicates with two reagent lots for a total of 60 replicates per panel member. Assignment of the concentration for clinical specimens or cultured virus stocks was determined using a comparator assay. Probit analysis was performed to generate 50% and 95% predicted detection limits. Per CLSI EP17-A2 (37), the LoDs were defined using the results from the reagent lot with the highest concentration for the predicted detection limit defined as LoD as shown in Table 4.

Table 4: Limit of Detection Across HIV-1 Subtypes and Groups

Subtype/Group	Predicted Detection Limit	Plasma	Serum
		Concentration (copies/mL)	Concentration (copies/mL)
A	50%	3.0	4.0
	95%	11.5	14.5
CRF01_AE	50%	1.5	4.5
	95%	4.5	15.7
CRF02_AG	50%	3.8	4.3
	95%	15.1	14.3
C	50%	2.0	4.1
	95%	9.8	16.7
D	50%	4.2	3.7
	95%	13.8	15.2
F	50%	2.4	4.9
	95%	8.9	15.0
G	50%	3.5	2.5
	95%	15.7	6.5
N	50%	1.4	2.1
	95%	6.1	5.9
O	50%	1.9	6.5
	95%	6.5	27.2

## Linear Range

The linear range of the Aptima HIV-1 Quant Dx assay was established by testing panels that consisted of cultured HIV-1 subtype B virus diluted in HIV-1 negative human EDTA plasma according to CLSI EP06-A (38). Panels ranged in concentration from 1.30 to 7.30  $\log_{10}$  copies/mL. Testing was performed on seven Panther systems with two reagent lots. As shown in Figure 6, the Aptima HIV-1 Quant Dx assay demonstrated linearity across the range tested.



*Figure 6. Linearity of the Aptima HIV-1 Quant Dx Assay*

## Linearity across HIV-1 Subtypes and Groups

The linear response of the Aptima HIV-1 Quant Dx assay across group M (subtypes A, B, C, D, F, G, H, CRF01\_AE) and groups N and O was confirmed by testing panels that consisted of HIV-1 transcript diluted in buffer at concentrations ranging from 2.00 to 6.70  $\log_{10}$  copies/mL. Testing was performed on four Panther systems and across six runs. Linearity was demonstrated across the range tested (Figure 7).

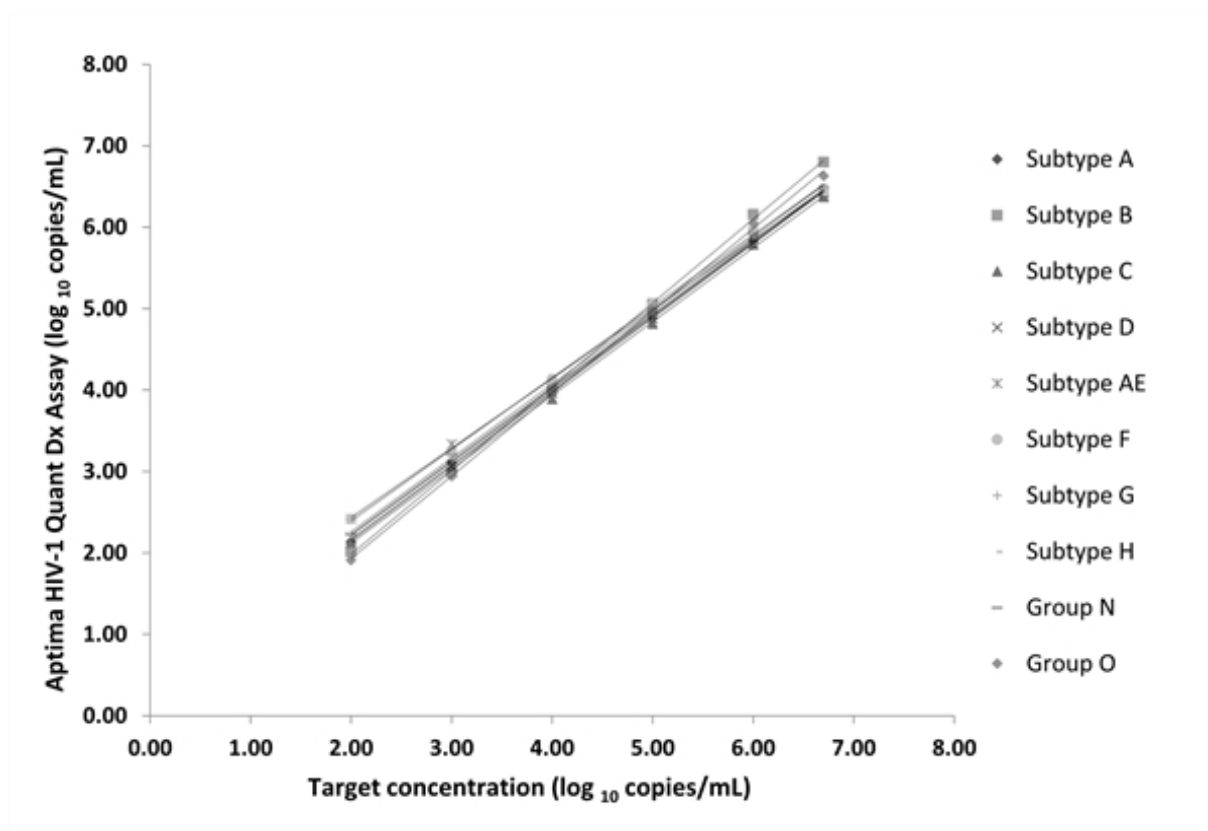


Figure 7. Linearity across Group M (Subtypes A, B, C, D, F, G, H, CRF01\_AE) and Groups N and O

### Determination of the Lower Limit of Quantitation Using the 3<sup>rd</sup> HIV-1 WHO International Standard

The lower limit of quantitation (LLoQ) is defined as the lowest concentration at which HIV-1 RNA is reliably quantitated within a total error (TE), according to CLSI EP17-A2 (37. TE was calculated using the Westgard model ( $TE = |\text{bias}| + 2SD$ )\*. To ensure accuracy and precision of measurements, the TE of the Aptima HIV-1 Quant Dx assay was set at 1 log<sub>10</sub> copies/mL (i.e., at LLoQ, the difference between two measurements of more than 1 log<sub>10</sub> copies/mL is statistically significant).

LLoQ was determined by testing panels that consisted of dilutions of the 3<sup>rd</sup> HIV-1 WHO International Standard (subtype B, NIBSC code: 10/152) in HIV-1 negative human EDTA plasma. Per CLSI EP17-A2, panels were tested with three reagent lots in replicates of 30 for each lot from 23 runs. The results are shown in Table 5. The highest LLoQ across the three lots tested on the Aptima HIV-1 Quant Dx assay using the 3<sup>rd</sup> HIV-1 WHO International Standard is 15 copies/mL (1.17 log<sub>10</sub> copies/mL) (Table 6).

Table 5: Determination of LLoQ of the Aptima HIV-1 Quant Dx Assay Using the 3rd HIV-1 WHO International Standard

Reagent Lot	Target Concentration (log <sub>10</sub> copies/mL)	Aptima HIV-1 Quant Dx (log <sub>10</sub> copies/mL)	SD (log <sub>10</sub> copies/mL)	Bias  (log <sub>10</sub> copies/mL)	Calculated TE (log <sub>10</sub> copies/mL)
1	1.15	1.05	0.37	0.10	0.84
	1.24	0.94	0.35	0.30	1.00
	1.42	1.37	0.33	0.05	0.71
	1.54	1.47	0.22	0.07	0.50
	1.94	1.98	0.13	0.04	0.30
	2.42	2.45	0.07	0.03	0.17
	2	1.15	0.50	0.33	0.65
1.24		0.80	0.44	0.45	1.33
1.42		0.93	0.37	0.49	1.24
1.54		1.17	0.31	0.38	0.99
1.94		1.75	0.21	0.19	0.62
2.42		2.28	0.21	0.14	0.55
3		1.15	0.88	0.41	0.26
	1.24	0.98	0.35	0.27	0.97
	1.42	1.15	0.34	0.27	0.96
	1.54	1.35	0.37	0.20	0.93
	1.94	1.84	0.17	0.11	0.44
	2.42	2.37	0.11	0.05	0.27

SD=standard deviation TE=total error.

Table 6: Summary of LLoQ Using the 3<sup>rd</sup> HIV-1 WHO International Standard (3 Reagent Lots)

Reagent Lot	LLoQ (log <sub>10</sub> copies/mL)	LLoQ (copies/mL)
1	0.94	8.7
2	1.17	15
3	0.98	9.5

## Verification of LLoQ across HIV-1 Subtypes and Groups

LLoQ across HIV-1 subtypes and groups was verified following CLSI EP17-A2 (37). Panels were made for each HIV-1 group M (subtypes A, B, C, D, F, G, CRF01\_AE, CRF02\_AG), and groups N and O by spiking pooled HIV-1 negative human EDTA plasma with either naturally infected clinical samples or clinical isolates. Testing consisted of a total 30 replicates per panel member. The data in Table 7 shows the lowest concentration for each subtype or group at which TE was less than 1 log<sub>10</sub> copies/mL. The highest LLoQ for all subtypes and groups tested was 30 copies/mL; this higher value, therefore, was selected as the LLoQ for the Aptima HIV-1 Quant Dx assay (Table 7).

*Table 7: Verification of LLoQ by HIV-1 Subtype or Group*

Panel	LLoQ (copies/mL)
Subtype A	30
Subtype CRF01_AE	10
Subtype CRF02_AG	30
Subtype B	10
Subtype C	30
Subtype D	15
Subtype F	15
Subtype G	30
Group N	10
Group O	15

## Precision

To assess precision of the Aptima HIV-1 Quant Dx assay, a panel that was made by spiking cultured HIV-1 subtype B virus into HIV-1 negative EDTA plasma was tested by three operators using three reagents lots on three Panther systems over 20 days (Table 8). The panel consisted of one HIV-1 negative panel member and eight HIV-1 positive panel members. Assignment of the concentration for clinical specimens or cultured virus stocks was determined using a comparator assay.

Table 8: Precision of the Aptima HIV-1 Quant Dx Assay

Number of Valid Replicates	Mean Concentration (log <sub>10</sub> copies/mL)	Inter-Instrument		Inter-Operator		Inter-Lot		Inter-Run		Intra-Run		Total	
		SD	CV (%)	SD	CV (%)	SD	CV (%)	SD	CV (%)	SD	CV (%)	SD	CV (%)
137	1.80	0.00	0.00	0.03	1.72	0.00	0.00	0.00	0.00	0.16	8.93	0.16	9.10
157	2.37	0.00	0.00	0.05	2.08	0.01	0.36	0.08	3.33	0.15	6.19	0.17	7.34
160	2.47 <sup>a</sup>	0.00	0.00	0.03	1.37	0.03	1.35	0.07	2.97	0.12	5.03	0.15	6.15
162	2.95	0.00	0.00	0.08	2.57	0.02	0.61	0.10	3.29	0.09	3.04	0.15	5.20
162	3.80	0.01	0.32	0.03	0.80	0.02	0.48	0.06	1.49	0.07	1.80	0.10	2.53
159	4.93	0.00	0.00	0.02	0.37	0.04	0.77	0.05	1.10	0.04	0.71	0.08	1.56
162	5.69	0.00	0.00	0.02	0.27	0.04	0.66	0.03	0.58	0.07	1.29	0.09	1.58
162	6.71	0.00	0.00	0.01	0.22	0.04	0.52	0.04	0.60	0.05	0.78	0.08	1.13

CV=coefficient of variation, SD=standard deviation.

<sup>a</sup>This panel member was diluted 1:3 with specimen diluent and tested to evaluate the precision of the diluted sample.

**Note:** Variability from some factors may be numerically negative, which can occur if the variability due to those factors is very small.

When this occurs, SD=0 and CV=0%. The total number of replicates tested was 162 for each panel; only replicates with a numerical value were analyzed.

## Potentially Interfering Endogenous and Exogenous Substances

The susceptibility of the Aptima HIV-1 Quant Dx assay to interference by elevated levels of endogenous substances and by drugs commonly prescribed to HIV-1 infected individuals was evaluated. HIV-1 negative human EDTA plasma samples and samples spiked with HIV-1 to a concentration of 3 log<sub>10</sub> copies/mL of HIV-1 RNA were tested.

No interference in performance of the Aptima HIV-1 Quant Dx assay was observed in the presence of albumin (90 mg/mL), hemoglobin (5 mg/mL), triglycerides (30 mg/mL), or unconjugated bilirubin (0.2 mg/mL).

No interference in performance of the Aptima HIV-1 Quant Dx assay was observed in the presence of the exogenous substances listed in Table 9 at concentrations at least three times the C<sub>max</sub> (human plasma).

Table 9: Exogenous Substances

Exogenous Substance Pool	Exogenous Substances Tested
1	Lopinavir, indinavir, saquinavir, ritonavir, nelfinavir mesylate, darunavir, amprenavir, atazanavir
2	Nevirapine, efavirenz, rilpivirine, clarithromycin, amphotericin B
3	Tenofovir disoproxil fumarate, adefovir dipivoxil, ribavirin, enfuvirtide, maraviroc, raltegravir, dolutegravir
4	Abacavir sulfate, didanosine, zidovudine, lamivudine, stavudine, entecavir, telbivudine, emtricitabine
5	Paroxetine HCl, fluoxetine, sertraline

6	Ganciclovir, valacyclovir, acyclovir, rifampin/rifampicin, ethambutol
7	Ciprofloxacin, azithromycin, amoxicillin, cephalexin, ampicillin, trimethoprim
8	Valganciclovir hydrochloride, boceprevir, telaprevir, simeprevir, sofosbuvir
9	Pegylated interferon alpha -2b, interferon alpha -2a, interferon alpha -2b
10	Heparin, EDTA, sodium citrate
11	Tipranavir
12	Isoniazid

Clinical EDTA plasma specimens listed in Table 10 from patients with elevated levels of defined substances or from patients with the diseases listed were tested with the Aptima HIV-1 Quant Dx assay with and without the presence of 3 log<sub>10</sub> copies of HIV-1 RNA. No interference in performance was observed.

Table 10: Tested Clinical Specimen Types

Clinical Specimen Types	
1	Rheumatoid factor (RF)
2	Antinuclear antibody (ANA)
3	Anti-Jo-1 antibody (JO-1)
4	Systemic lupus erythematosus (SLE)
5	Rheumatoid arthritis (RA)
6	Multiple sclerosis (MS)
7	Hyperglobulinemia
8	Elevated alanine aminotransferase (ALT)
9	Alcoholic cirrhosis (AC)
10	Multiple myeloma (MM)
11	Lipemic (elevated lipid)
12	Icteric (elevated bilirubin)
13	Hemolyzed (elevated hemoglobin)
14	Elevated protein albumin
15	HCV antibodies
16	HBV antibodies
17	HIV-2 antibodies



### Performance with HIV-1 Negative Specimens

Specificity of the Aptima HIV-1 Quant Dx assay was determined using 120 fresh and 510 frozen HIV-1 negative EDTA plasma specimens. HIV-1 RNA was not detected in all 630 samples (specificity of 100%; 95% CI: 99.4-100%) (Table 11).

Table 11: Specificity in Plasma Specimens

	Fresh Plasma	Frozen Plasma	All
<b>Valid replicates (n)</b>	120	510	630
<b>Non-Reactive</b>	120	510	630
<b>Specificity (95% CI)</b>	100% (97.0-100)	100% (99.3-100)	100% (99.4-100)

CI=confidence interval

### Potentially Interfering Microbial Contaminants

Potential cross-reactivity to pathogens (Table 12) was evaluated in the Aptima HIV-1 Quant Dx assay in the presence or absence of 3 log<sub>10</sub> copies/mL HIV-1 RNA in HIV-1 negative human EDTA plasma. No interference in the performance of the assay was observed in the presence of the pathogens.

Table 12: Pathogens Tested for Cross-Reactivity

Pathogen	Concentration
Hepatitis A virus	100,000 PFU/mL <sup>a</sup>
Hepatitis B virus	100,000 IU/mL <sup>b</sup>
Hepatitis C virus	100,000 IU/mL
Hepatitis G virus	100,000 copies/mL
Herpes simplex virus 1 (HSV-1)	100,000 PFU/mL
Herpes simplex virus 2 (HSV-2)	75,000 PFU/mL
Human herpes virus 6	100,000 copies/mL
Human herpes virus 8	42,000 PFU/mL
HIV-2	5,500 PFU/mL
Human T-cell lymphotropic virus (HTLV)	100,000 vp/mL <sup>c</sup>
West Nile virus	100,000 copies/mL
Parvovirus B19	100,000 IU/mL
Cytomegalovirus	100,000 copies/mL
Epstein-Barr virus	100,000 copies/mL
Adenovirus type 5	100,000 PFU/mL
Dengue virus	100,000 copies/mL
Influenza A virus	100,000 PFU/mL
<i>Staphylococcus aureus</i>	1,000,000 CFU/mL <sup>d</sup>
<i>Propionibacterium acnes</i>	1,000,000 CFU/mL
<i>Staphylococcus epidermidis</i>	1,000,000 CFU/mL
<i>Neisseria gonorrhoeae</i>	1,000,000 CFU/mL
<i>Chlamydia trachomatis</i>	300,000 IFU/mL <sup>e</sup>
<i>Candida albicans</i>	1,000,000 CFU/mL

<sup>a</sup>PFU/mL=Plaque forming units per mL.

<sup>b</sup>IU/mL=International units per mL.

<sup>c</sup>vp/mL=Viral particles per mL.

<sup>d</sup>CFU/mL=Colony forming units per mL.

<sup>e</sup>IFU/mL=Inclusion forming units per mL.

## Repeatability of Clinical Specimens

Ten clinical EDTA plasma samples and ten serum samples were tested in three replicates using the Aptima HIV-1 Quant Dx assay. The average concentration and standard deviation (SD) are shown in Table 13 and Table 14.

Table 13: Repeatability of Plasma Clinical Specimens

Specimen	Plasma	
	Average Concentration (log <sub>10</sub> copies/mL)	SD
1	2.57	0.06
2	3.20	0.03
3	3.24	0.06
4	3.97	0.02
5	4.20	0.05
6	4.85	0.01
7	5.17	0.04
8	5.51	0.06
9	5.84	0.02
10	6.64	0.00

SD=standard deviation.

Table 14: Repeatability of Serum Clinical Specimens

Specimen	Serum	
	Average Concentration (log <sub>10</sub> copies/mL)	SD
1	1.68	0.10
2	2.44	0.19
3	3.08	0.03
4	3.37	0.06
5	4.05	0.04
6	4.55	0.06
7	5.06	0.04
8	5.49	0.05
9	6.28	0.02
10	6.79	0.04

SD=standard deviation

### Sample Dilution Using Specimen Diluent

To evaluate sample dilution, a panel that consisted of 11 samples with concentrations that spanned the linear range of the Aptima HIV-1 Quant Dx assay and that consisted of two samples above the ULoQ of the assay were tested neat and diluted (1:3 or 1:100 in specimen diluent) in triplicate (Table 15).

Table 15: Sample Dilution

Dilution	Average Neat Concentration (log <sub>10</sub> copies/mL)	Average Reported Concentration <sup>a</sup> (log <sub>10</sub> copies/mL)	Difference
1:3	2.57	2.72	0.15
	3.20	3.33	0.13
	3.24	3.55	0.30
	3.97	4.05	0.07
	4.20	4.24	0.04
	4.85	4.81	-0.04
	5.17	5.08	-0.08
	5.51	5.32	-0.19
	5.84	5.94	0.10
	6.64	6.66	0.02
	2.46 <sup>b</sup>	2.19	-0.27
1:100	>7.00 (7.16 <sup>c</sup> )	7.48	0.32
1:100	>7.00 (7.40 <sup>c</sup> ) <sup>b</sup>	7.39	-0.01

<sup>a</sup>Reported concentration is the value reported by the Panther system after the dilution factor has been applied.

<sup>b</sup>Spiked specimen.

<sup>c</sup>All results > 7.00 log<sub>10</sub> copies/mL were estimated using additional analysis.

### Carryover

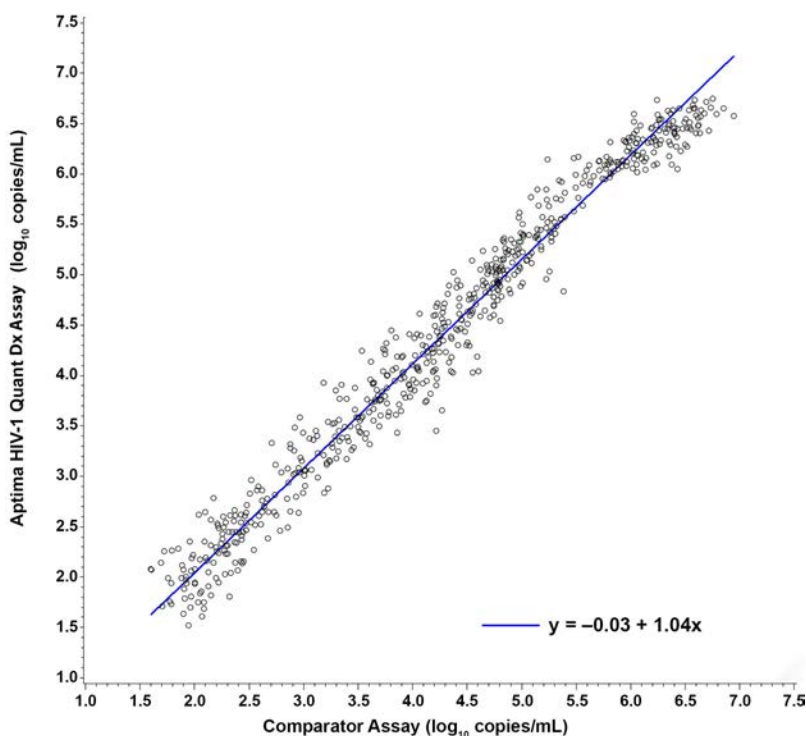
To establish that the Panther system minimizes the risk of false positive results arising from carryover contamination, a multi-run analytical study was conducted using spiked panels on two Panther systems. Carryover was assessed using high titer HIV-1 spiked samples (7 log<sub>10</sub> copies/mL) interspersed between HIV-1 negative samples in a checkerboard pattern. Testing was carried out over five runs. The overall carryover rate was 0% (n=469).

## Clinical Performance

### Validation of Viral Load Quantitation

Quantitation of HIV-1 RNA was compared between the Aptima HIV-1 Quant Dx assay and an FDA-approved comparator assay. The study included testing of clinical EDTA plasma samples (stored fresh or frozen) and contrived samples (cultured virus spiked into negative clinical plasma samples). Each sample was tested in duplicate with the Aptima HIV-1 Quant Dx assay and the comparator assay. Aptima HIV-1 Quant Dx assay testing was performed at 3 external sites, with each site using 3 reagent kit lots; comparator assay testing was performed at 1 external laboratory.

628 matched sets of samples (within the linear range of both assays) created from 489 enrolled subjects and 153 contrived samples were tested with the Aptima HIV-1 Quant Dx assay and comparator assay. Figure 8 shows the results of the Deming regression analysis ( $y = -0.03 + 1.04x$ ).



**Figure 8. Correlation Between the Aptima HIV-1 Quant Dx Assay and Comparator Assay**

## Clinical Specificity Studies

### Clinical Specificity in HIV-1 Negative Samples

Previously frozen HIV-1 negative EDTA plasma samples obtained from volunteer whole blood donors were tested with the Aptima HIV-1 Quant Dx assay. Testing was performed with 3 reagent kit lots at 3 external sites. Clinical specificity was calculated as the percentage of HIV-1 negative samples with results of "Not Detected." Six hundred (600) HIV-1 negative plasma samples were tested and HIV-1 RNA was not detected in all 600 samples. Specificity in negative plasma samples was 100% (600/600, 95% Score CI: 99.4% to 100%).

### Clinical Specificity in Low-Risk Population

Previously frozen samples obtained from first-time blood donors and non-blood donors at low risk for HIV-1 infection were tested with the Aptima HIV-1 Quant Dx assay. Testing was performed with 1 reagent kit lot at 1 external site. Clinical specificity was calculated by comparing Aptima HIV-1 Quant Dx assay results to FDA-cleared NAT assay results.

Table 16 shows the specificity of the Aptima HIV-1 Quant Dx assay in a low-risk population by sample type.

Table 16: Clinical Specificity of the Aptima HIV-1 Quant Dx Assay in a Low-Risk Population by Sample Type

Sample Type	n	TP	FP	TN	FN	Specificity % (95% CI) <sup>a</sup>
All	911	4	3	902	2	99.7 (99.0, 99.9)
Serum	304	1	2 <sup>b</sup>	300	1	99.3 (97.6, 99.9)
Plasma	607	3	1	602	1	99.8 (99.1, 100)

CI=confidence interval, FN=false negative, FP=false positive, TN=true negative, TP=true positive.

<sup>a</sup>Clopper-Pearson CI.

<sup>b</sup>1 of 2 serum samples with false positive outcomes were positive when tested using an FDA-approved 4th generation HIV-1/HIV-2 antigen/antibody combination immunoassay.

## Clinical Sensitivity Studies

### Clinical Sensitivity in HIV-1 Positive Samples

Previously frozen HIV-1 positive samples were tested with the Aptima HIV-1 Quant Dx assay. Testing was performed with 2 reagent kit lots at 3 sites, including 2 external sites.

Table 17 shows the sensitivity of the Aptima HIV-1 Quant Dx assay in positive samples by sample type.

Table 17: Clinical Sensitivity of the Aptima HIV-1 Quant Dx Assay in HIV-1 Positive Samples by Sample Type

Sample Type	n	TP	FN	Sensitivity % (95% CI) <sup>a</sup>
All	1572	1565	7	99.6 (99.1, 99.8)
Serum	524	520	4	99.2 (98.1, 99.8)
Plasma	1048	1045	3	99.7 (99.2, 99.9)

CI=confidence interval, FN=false negative, TP=true positive.

<sup>a</sup>Clopper-Pearson CI.

### Clinical Sensitivity in High-Risk Population

Prospectively collected samples from individuals at high risk for HIV-1 infection were tested with the Aptima HIV-1 Quant Dx assay. Testing was performed with 1 reagent kit lot at 3 sites, including 2 external sites. Clinical sensitivity was calculated by comparing the Aptima HIV-1 Quant Dx assay results to FDA-cleared NAT assay results.

Of the evaluable 498 samples, 332 were plasma samples and 166 were serum samples. Clinical sensitivity was 100% (1/1, 95% CI: 20.7% to 100%) in serum samples. Sensitivity could not be assessed in plasma samples since no samples with true positive or false negative assay results were observed.

### Positivity in Serodiscordant Samples

Previously frozen serodiscordant samples (i.e., repeatedly reactive on an FDA-licensed initial HIV immunoassay and indeterminate or negative on a supplemental immunoassay) were obtained from blood donors and non-blood donors were tested with the Aptima HIV-1 Quant Dx assay. Of 473 evaluable samples, 76 were selected from seroconversion panels. Testing was performed with 2 reagent kit lots at 1 internal site. The positivity was calculated for serodiscordant samples tested with the Aptima HIV-1 Quant Dx assay.

Table 18 shows the positivity of the Aptima HIV-1 Quant Dx assay in serodiscordant samples by sample group, HIV supplemental test type, and HIV supplemental test result.

Table 18: Positivity of Aptima HIV-1 Quant Dx Assay in Serodiscordant Samples

Supplemental Test Type	Supplemental Test Result	Positivity % (n/N) 95% CI <sup>a</sup>		
		Non-Seroconversion Panel Group		Seroconversion Panel Group
		3 <sup>rd</sup> Gen	4 <sup>th</sup> Gen	4 <sup>th</sup> Gen
HIV-1/2 Immunochromatographic	Negative	N/A	0.0 (0/11) 0.0-25.9	100 (6/6) 61.0-100
HIV-1/2 Immunochromatographic	Indeterminate	N/A	100 (1/1) 20.7-100	100 (1/1) 20.7-100
HIV-1/2 Rapid	Negative	N/A	0.0 (0/11) 0.0-25.9	100 (24/24) 86.2-100
HIV-1/2 Rapid	Indeterminate	N/A	0.0 (0/2) 0.0-65.8	N/A
HIV-1 WB or IFA	Negative	0.4 (1/239) 0.1-2.3	100 (4/4) 51.0-100	100 (35/35) 90.1-100
HIV-1 WB or IFA	Indeterminate	0.0 (0/128) 0.0-2.9	100 (1/1) 20.7-100	100 (10/10) 72.2-100

3<sup>rd</sup> Gen=third generation immunoassay, 4<sup>th</sup> Gen=fourth generation immunoassay, CI=confidence interval, IFA=indirect immunofluorescence assay, N/A=not available, WB=Western blot.

<sup>a</sup>Score CI.

### Reproducibility Studies

#### Reproducibility in Plasma Samples

Reproducibility of the Aptima HIV-1 Quant Dx assay in plasma samples was evaluated at 3 external sites. Two operators performed testing at each site. Each operator performed 2

runs per day over 3 days, using 3 reagent lots over the course of testing. Each run had 3 replicates of each panel member.

Reproducibility was tested using panel members that consisted of HIV-1 negative EDTA plasma. The positive panel members were created by spiking the negative plasma with cultured virus (HIV-1 subtype B) in concentrations that spanned the linear range of the Aptima HIV-1 Quant Dx assay.

Table 19 shows the reproducibility and precision of assay results for each positive panel member between sites, between operators, between lots, between days, between runs, within runs, and overall. When only samples with results above the lower limit of quantitation (LLOQ) were included (samples with results below the LLOQ were excluded) total SD was  $\leq 0.2 \log_{10}$  copies/mL for all panel members. When all samples with detectable HIV-1 RNA were included, total SD values remained unchanged except for panel member 1, which had a total SD of  $0.3 \log_{10}$  copies/mL.

For all HIV-1 positive panel members, agreement values were 100%. For the HIV-1 negative panel member, 108 replicates were tested and HIV-1 RNA was not detected in all 108 replicates (negative agreement=100%, 95% Score CI: 96.6% to 100%).

Table 19: Reproducibility and Precision of Aptima HIV-1 Quant Dx Assay on the Panther System in Positive Plasma Panel Members

Panel	N <sup>a</sup>	Mean Log <sub>10</sub> Copies/mL	Between Sites		Between Operators		Between Lots		Between Days		Between Runs		Within Runs		Total	
			SD	%CV	SD	%CV	SD	%CV	SD	%CV	SD	%CV	SD	%CV	SD	%CV
1	107	1.71 <sup>b</sup>	0.05	2.66	0.07	4.10	0.07	4.09	0.00	0.00	0.17	9.90	0.25	14.62	0.32	18.77
	85 <sup>c</sup>	1.84	0.07	3.51	0.00	0.00	0.02	0.97	0.00	0.00	0.06	3.07	0.17	8.98	0.19	10.17
2	108	2.94	0.08	2.74	0.00	0.00	0.00	0.00	0.04	1.49	0.00	0.00	0.11	3.69	0.14	4.83
3	108	3.84	0.07	1.75	0.00	0.00	0.00	0.00	0.04	0.95	0.04	0.98	0.06	1.62	0.11	2.75
4	108	4.94	0.08	1.52	0.00	0.00	0.03	0.57	0.03	0.50	0.05	1.01	0.06	1.18	0.11	2.30
5	108	5.71	0.07	1.26	0.00	0.00	0.01	0.22	0.05	0.85	0.04	0.77	0.07	1.23	0.12	2.11
6	108 <sup>d</sup>	6.71	0.05	0.80	0.00	0.00	0.02	0.32	0.03	0.43	0.07	1.03	0.06	0.85	0.11	1.65

CV=coefficient of variation, SD=standard deviation

<sup>a</sup>Number of valid test results with detectable HIV-1 RNA.

<sup>b</sup>Includes 22 replicates reported as  $<1.47 \log_{10}$  copies/mL. This sample had an assigned value of  $1.176 \log_{10}$  copies/mL.

<sup>c</sup>Number of valid results within the assay's linear range.

<sup>d</sup>Includes one replicate reported as  $>7 \log_{10}$  copies/mL. This sample had an assigned value of  $7.18 \log_{10}$  copies/mL.

Note: Variability from some factors may be numerically negative. This can occur if the variability due to those factors is very small (less than 0.01). In these cases, SD and CV are shown as 0.



### Reproducibility in Serum Samples

Reproducibility of the Aptima HIV-1 Quant Dx assay in serum samples was evaluated at 3 external sites. Two operators performed testing at each site. Each operator performed 1 run per day over 5 days, using 1 reagent lot over the course of testing. Each run had 3 replicates of each panel member.

Reproducibility was tested using panel members prepared with HIV-1 negative serum. Two positive panel members were created by spiking the negative serum matrix with 3X-5X LoD and 10X LoD concentrations of cultured virus (HIV-1 subtype B).

Table 20 shows the reproducibility and precision of assay results for each positive panel member between sites, between operators, between days, between runs, within runs, and overall.

For all HIV-1 positive panel members, agreement values were 100%. For the HIV-1 negative panel member, 90 replicates were tested and HIV-1 RNA was not detected in 89/90 replicates (negative agreement=98.9%, 95% Score CI: 94.0% to 99.8%).

*Table 20: Reproducibility and Precision of Aptima HIV-1 Quant Dx Assay on the Panther System in Positive Serum Panel Members*

Panel	N	Mean Log <sub>10</sub> Copies/mL	Between Sites		Between Operators		Between Days		Between Runs		Within Runs		Total	
			SD	%CV	SD	%CV	SD	%CV	SD	%CV	SD	%CV	SD	%CV
1	90	1.34	0.07	5.41	0.00	0.00	0.04	2.63	0.00	0.00	0.22	16.26	0.23	17.34
2	89	1.95	0.05	2.41	0.02	0.97	0.00	0.00	0.00	0.00	0.19	9.67	0.20	10.01

CV=log-normal coefficient of variation, SD=standard deviation (log<sub>10</sub> copies/mL).

**Note:** Variability from some factors may be numerically negative. This can occur if the variability due to those factors is very small. In these cases, SD and CV are shown as 0.00.

## Bibliography

1. **Barre-Sinoussi, F., J. C. Chermann, F. Rey, M. T. Nugeyre, S. Chamaret, J. Gruest, C. Dautet, C. Axler-Blin, F. Vezinet-Brun, C. Rouziou, W. Rozenbaum, and L. Montagnier.** 1983. Isolation of a T-lymphotropic retrovirus from a patient at risk for Acquired Immune Deficiency Syndrome (AIDS). *Science* **220**:868–871.
2. **Popovic, M., M. G. Sarngadharan, E. Read, and R. C. Gallo.** 1984. Detection, isolation, and continuous production of cytopathic retroviruses (HTLV-III) from patients with AIDS and pre-AIDS. *Science* **224**:497–500.
3. **Gallo R. C., S. Z. Salahuddin, M. Popovic, G. M. Streiner, M. Kaplan, D. F. Haynas, T. J. Palker, R. Redfield, J. Oleske, B. Safai, G. White, P. Foster, and P. D. Markham.** 1984. Frequent detection and isolation of cytopathic retroviruses (HTLV III) from patients with AIDS and at risk for AIDS. *Science* **224**:500–503.
4. **Piot, P., F. A. Plummer, F. S. Mhalu, J-L. Lamboray, J. Chin, and J. M. Mann.** 1988. AIDS: An international perspective. *Science* **239**:573–579.
5. **Sarngadharan, J. G., M. Popovic, L. Broch, J. Scupbach, and R. C. Gallo.** 1984. Antibodies reactive with human T-lymphotropic retroviruses (HTLV-III) in the serum of patients with AIDS. *Science* **224**:506–508.
6. **Gallo, D., J. S. Kimpton, and P. J. Dailey.** 1987. Comparative studies on use of fresh and frozen peripheral blood lymphocyte specimens for isolation of human immunodeficiency virus and effects of cell lysis on isolation efficiency. *J. Clin. Microbiol.* **25**:1291–1294.
7. **Clavel, F., D. Guetard, F. Brun-Vezinet, S. Chamaret, M. Rey, M. O. Santos-Ferraira, A. G. Laurent, C. Dautet, C. Katlama, C. Rouzioux, D. Klatzmann, J. L. Champalimaud, and L. Montagnier.** 1986. Isolation of a new human retrovirus from West African patients with AIDS. *Science* **233**:343–346.
8. **DeCock, K.M., Jaffe, H.W., Curran, J.W.** The evolving epidemiology of HIV/AIDS. *AIDS*, 2012.
9. **Gaines, H., M. A. von Sydow, and L.V. von Stedingk.** 1990. Immunological changes in primary HIV-1 infection. *AIDS* **4**:995–999.
10. **Tindall, B., and D. A. Cooper.** 1991. Primary HIV-1 infection: host responses and intervention strategies. *AIDS* **5**:1–14.
11. **Daar, E. S., T. Moudgil, R. D. Meyer, and D. D. Ho.** 1991. Transient high levels of viremia in patients with primary human immunodeficiency virus type 1 infection. *N. Engl. J. Med.* **324**:961–964.
12. **Clark, S. J., M. S. Saag, and W. D. Decker.** 1991. High titers of cytopathic virus in plasma of patients with symptomatic primary HIV-1 infection. *N. Engl. J. Medicine* **324**:954–960.
13. **Albert J., B. Abrahamsson, K. Nagy, E. Aurelius, H. Gaines, G. Nystrom, and E. M. Fenyo.** 1990. Rapid development of isolate-specific neutralizing antibodies after primary HIV-1 infection and consequent emergence of virus variants which resist neutralization by autologous sera. *AIDS* **4**:107–112.
14. **Horsburgh, C. R. Jr., C. Y. Ou, J. Jason, S. D. Holmberg, I. M. Longini Jr., C. Schable, K. H. Mayer, A. R. Lifson, G. Schochetman, J. W. Ward, et al.** 1989. Duration of human immunodeficiency virus infection before detection of antibody. *Lancet* **16**:637–640.
15. **Schnittman, S. M., M. C. Psallidopoulos, H. C. Lane, L. Thompson, M. Baseler, F. Massari, C. H. Fox, N. P. Salzman, and A. S. Fauci.** 1989. The reservoir for HIV-1 in human peripheral blood is a T cell that maintains expression of CD4. *Science* **245**:305–308. Erratum in: *Science* 1989 **245**, preceding 694.
16. **Schnittman, S. M., J. J. Greenhouse, M. C. Psallidopoulos, M. Baseler, N. P. Salzman, A. S. Fauci, and H.C. Lane.** 1990. Increasing viral burden in CD4+ T cells from patients with human immunodeficiency virus (HIV) infection reflects rapidly progressive immunosuppression and clinical disease. *Ann. Intern. Med.* **113**:438–443.
17. **Pantaleo, G., C. Graziosi, and A. S. Fauci.** 1993. New concepts in the immunopathogenesis of human immunodeficiency virus (HIV) infection. *N. Engl. J. Med.* **328**:327–335.
18. **Piatak, M. Jr., M. S. Saag, L. C. Yang, S. J. Clark, J. C. Kappes, K. C. Luk, B. H. Hahn, G. M. Shaw, and J. D. Lifson.** 1993. High levels of HIV-1 in plasma during all stages of infection determined by competitive PCR. *Science* **259**:1749–1754.
19. **Fauci, A. S., S. M. Schnittman, G. Poli, S. Koenig, and G. Pantaleo.** 1991. NIH conference: immunopathogenic mechanisms in human immunodeficiency virus (HIV) infection. *Ann. Intern. Med.* **114**:678–693.
20. **Coffin, J. M.** 1995. HIV-1 population dynamics in vivo: implications for genetic variation, pathogenesis, and therapy. *Science* **267**:483–489.
21. **Ho, D. D., A. U. Neumann, A. S. Perelson, W. Chen, J. M. Leonard, and M. Markowitz.** 1995. Rapid turnover of plasma virions and CD4 lymphocytes in HIV-1 infection. *Nature* **373**:123–126.
22. **Wei, X., S. K. Ghosh, M. E. Taylor, V. A. Johnson, E. A. Emini, P. Deutsch, J. D. Lifson, S. Bonhoeffer, M. A. Nowak, B. H. Hahn et al.** 1995. Viral dynamics in human immunodeficiency virus type 1 infection. *Nature* **373**:117–122.
23. **O'Brien, W. A., P. M. Hartigan, D. Martin, J. Esinhart, A. Hill, S. Benoit, M. Rubin, M. S. Simberkoff, and J. D. Hamilton.** 1996. Changes in plasma HIV-1 RNA and CD4 lymphocyte counts and the risk of progression to AIDS. Veterans Affairs Cooperative Study Group on AIDS. *N. Engl. J. Med.* **334**:426–431.
24. **Welles, S. L., J. B. Jackson, B. Yen-Lieberman, L. Demeter, A. J. Japour, L. M. Smeaton, V. A. Johnson, D. R. Kuritzkes, R. T. D'Aquila, P. A. Reichelderfer, D. D. Richman, R. Reichman, M. Fischl, R. Dolin, R. W. Coombs, J. O. Kahn, C. McLaren, J. Todd, S. Kwok, and C. S. Crumpacker.** 1996. Prognostic value of plasma Human Immunodeficiency Virus Type I (HIV-1) RNA levels in patients with advanced HIV-1 disease and with little or no zidovudine therapy. AIDS Clinical Trials Group Protocol 116A/116B/117 Team. *J. Infect. Dis.* **174**:696–703.

25. **Coombs, R. W., S. L. Welles, C. Hooper, P. S. Reichelderfer, R. T. D'Aquila, A. J. Japour, V. A. Johnson, D. R. Kuritzkes, D. D. Richman, S. Kwok, J. Todd, J. B. Jackson, V. DeGruttola, C. S. Crumpacker, and J. Kahn.** 1996. Association of plasma Human Immunodeficiency Virus Type I RNA level with risk of clinical progression in patients with advanced infection. AIDS Clinical Trials Group (ACTG) 116B/117 Study Team. ACTG Virology Committee Resistance and HIV-1 RNA Working Groups. *J. Infect. Dis.* **174**:704–712.
26. **Hammer, S., C. Crumpacker, R. D'Aquila, B. Jackson, J. Lathey, D. Livnat, and P. Reichelderfer.** 1993. Use of virologic assays for detection of human immunodeficiency virus in clinical trials: Recommendations of the AIDS Clinical Trials Group Virology Committee. *J. Clin. Microbiol.* **31**:2557–2564.
27. **Schochetman, G., and J. R. George,** ed. 1994. *AIDS Testing: A Comprehensive Guide To Technical, Medical, Social, Legal and Management Issues*, 2<sup>nd</sup> ed. Springer-Verlag, New York.
28. **Mulder, J., N. McKinney, C. Christopherson, J. Sninsky, L. Greenfield, and S. Kwok.** 1994. Rapid and simple PCR assay for quantitation of human immunodeficiency virus type 1 RNA in plasma: application to acute retroviral infection. *J. Clin. Microbiol.* **32**:292–300.
29. **Dewar, R. L., H. C. Highbarger, M. D. Sarmiento, J. A. Todd, M. B. Vasudevachari, R. T. Davey, Jr., J. A. Kovacs, N. P. Salzman, H. C. Lane, and M. S. Urdea.** 1994. Application of branched DNA signal amplification to monitor human immunodeficiency virus type 1 burden in human plasma. *J. Infect. Dis.* **170**:1172–1179.
30. **van Gemen, B., T. Kievits, R. Schukkink, D. van Strijp, L. T. Malek, R. Sooknanan, H. G. Huisman, and P. Lens.** 1993. Quantification of HIV-1 RNA in plasma using NASBA during HIV-1 primary infection. *J. Virol. Methods* **43**:177–187.
31. **Gill, P. and Ghaemi, A.** 2008. Nucleic acid isothermal amplification technologies: a review. *Nucleosides Nucleotides Nucleic Acids.* **27** (3):224-43.
32. **Hill, C.** 2001. Molecular diagnostic testing for infectious diseases using TMA technology. *Expert Reve. Mol. Diagn.* **1**(4): 445-455.
33. **Clinical and Laboratory Standards Institute (CLSI).** 2005. *Collection, Transport, Preparation, and Storage of Specimens for Molecular Methods; Approved Guideline.* CLSI Document MM13-A. Wayne, PA.
34. **29 CFR Part 1910.1030.** Occupational Exposure to Bloodborne Pathogens; current version.
35. **Centers for Disease Control and Prevention/National Institutes of Health.** *Biosafety in Microbiological and Biomedical Laboratories (BMBL);* current version.
36. **Clinical and Laboratory Standards Institute (CLSI).** 2002. *Clinical Laboratory Waste Management.* CLSI Document GP5-A2. Villanova, PA.
37. **Clinical and Laboratory Standards Institute (CLSI).** 2012. *Evaluation of Detection Capability for Clinical Laboratory Measurement Procedures; Approved Guideline—Second Edition.* CLSI Document EP17-A2. Clinical and Laboratory Standards Institute, Wayne, PA.
38. **Clinical and Laboratory Standards Institute (CLSI).** 2003. *Evaluation of the Linearity of Quantitative Measurement Procedures: A Statistical Approach; Approved Guideline.* CLSI document EP06-A. Clinical and Laboratory Standards Institute, Wayne, PA.



Hologic, Inc.  
10210 Genetic Center Drive  
San Diego, CA 92121 USA

Customer Support: +1 800 442 9892      customersupport@hologic.com  
Technical Support: +1 888 484 4747      molecularsupport@hologic.com

For more contact information, visit [www.hologic.com](http://www.hologic.com).

Hologic, Aptima, Panther, Panther Fusion, TMA, and associated logos are trademarks or registered trademarks of Hologic, Inc. and/or its subsidiaries in the United States and/or other countries.

Armored RNA is a trademark of Asuragen, Inc.

All other trademarks that may appear in this package insert are the property of their respective owners.

This product may be covered by one or more U.S. patents identified at [www.hologic.com/patents](http://www.hologic.com/patents).

© 2020–2024 Hologic, Inc. All rights reserved.

AW-31085-001 Rev. 001

2024-08