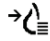


Focus Mode for Synthesized 2D and Reconstructed Slices Quick Reference Guide

This guide provides a brief explanation on how to use the Focus mode when displaying the synthesized 2D image with the corresponding reconstructed slices. For complete instructions, see the *SecurView DX/RT Workstation User Guide*.

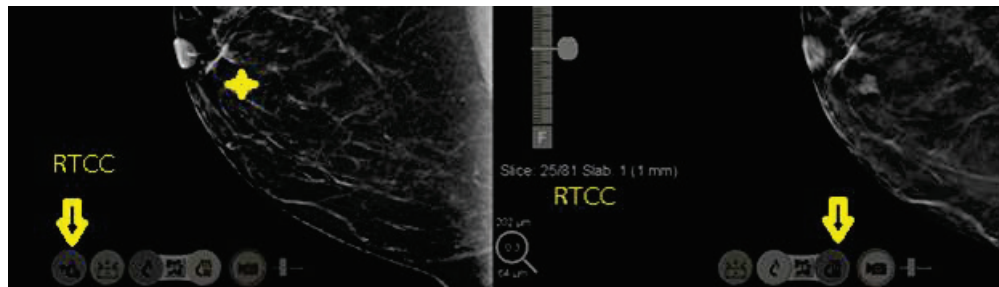
Focus mode can be used to visualize the correlation from a region of interest on a Hologic synthesized 2D image to the most representative reconstructed slice. Focus is available in Single or Double tiling.



The Focus button  is displayed on the tile with the **synthesized 2D image only** when the synthesized 2D image and the corresponding reconstructed slices hang side by side. For double tiling, they hang in adjacent tiles on the left or right side.

Example 1: **Single tiling** - Current RT CC synthesized 2D image on the left monitor and Current RT CC reconstructed slices on the right monitor.

1. To activate, click the Focus button or press the [V] key on the keyboard. The cursor changes to a crosshair (+).
2. Click the region of interest (any CAD mark or other anomaly). The associated reconstructed slice tile switches to the most representative slice. The yellow arrows and text in the screen shots are for emphasis, to draw your attention to the active buttons in each viewport.



Example 2: **Double tiling** – RT CC synthesized 2D image on the 1st tile RT CC reconstructed slices on the 2nd tile and both are displayed on the left monitor. RT MLO synthesized 2D image on the 3rd tile and RMLO reconstructed slices on the 4th tile and both are displayed on the right monitor.

