



Artwork and Signature File for:

MAN-06293-002 “Quick Reference Guide, Smart Mapping for SecurView”

Artwork consists of:

- Two (2) 8 ½ inch x 11 inch sheets attached

REV AUTHORED BY	DATE			 SIGNATURES ON FILE
L. GILBERT	03/26/20			
REV DRAFTED BY	DATE	TITLE		
L. GILBERT	03/26/20			
PROPRIETARY INFORMATION: The content of this document is the exclusive property of Hologic and may not, without prior written permission of Hologic, be reproduced, copied or used for any purpose whatsoever.		DOCUMENT NUMBER		REV
		AW-19555-002		001
		ARTWORK	SIZE A	SHEET 1 OF 1

Smart Mapping for Synthesized 2D and Reconstructed Slices

Quick Reference Guide

This guide provides a brief explanation on how to use the Smart Mapping mode when the synthesized 2D image with the corresponding reconstructed slices or SmartSlices display.

Smart Mapping mode can visualize the correlation between a region of interest on a Hologic® synthesized 2D image and the most representative reconstructed slice or SmartSlice. Smart Mapping is available in Quadruple, Single, or Double tiling.

For complete instructions, refer to the *SecurView® DX/RT 10.4 Workstation User Guide*.

1. The Smart Mapping icon displays on the left side of the toolbar. (See the following icon image.)



- a. Select the Smart Mapping icon or press the [V] key on the keyboard to activate. The cursor changes to crosshairs (+) within each tile that displays a synthesized 2D image.
- b. Select the region of interest (any CAD mark or other anomaly) within a synthesized 2D image. The associated reconstructed slice or SmartSlice (whichever is available, or whichever is configured to display on top when both are available) displays in single tiling on the adjacent display. This can be done on demand whether the images are displayed in Quadruple, Double, or Single tiling. (See the following figures.)
- c. Double-click in a Smart Mapping slices viewport to close it, while keeping Smart Mapping active.
- d. Select the Smart Mapping icon or press the [V] key to deactivate Smart Mapping for all displayed synthesized 2D images.

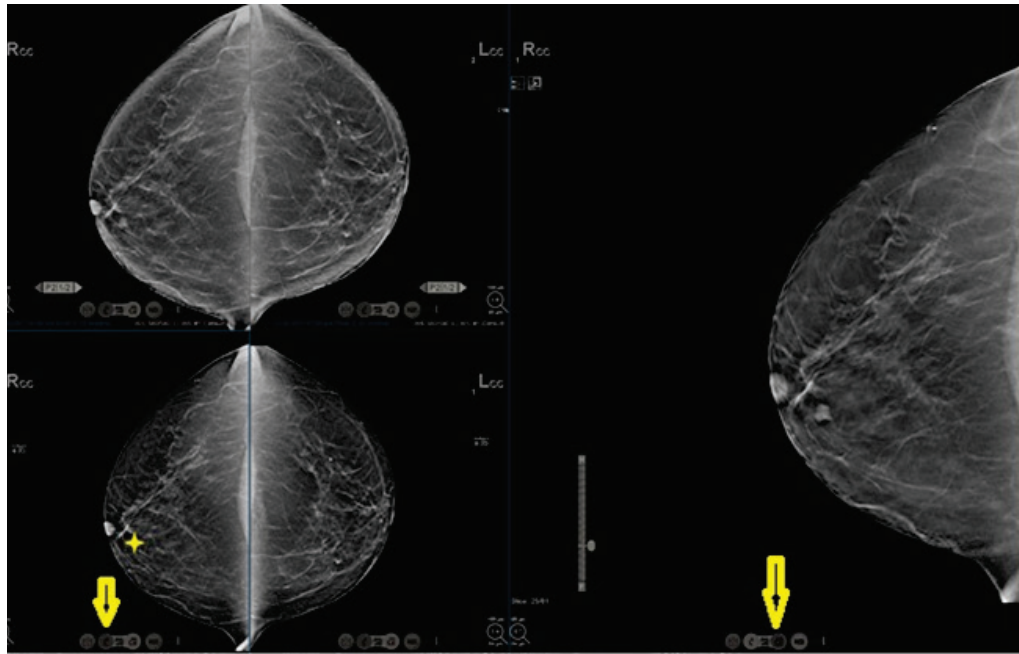


Figure 1: Quadruple tiling with smart mapping activated

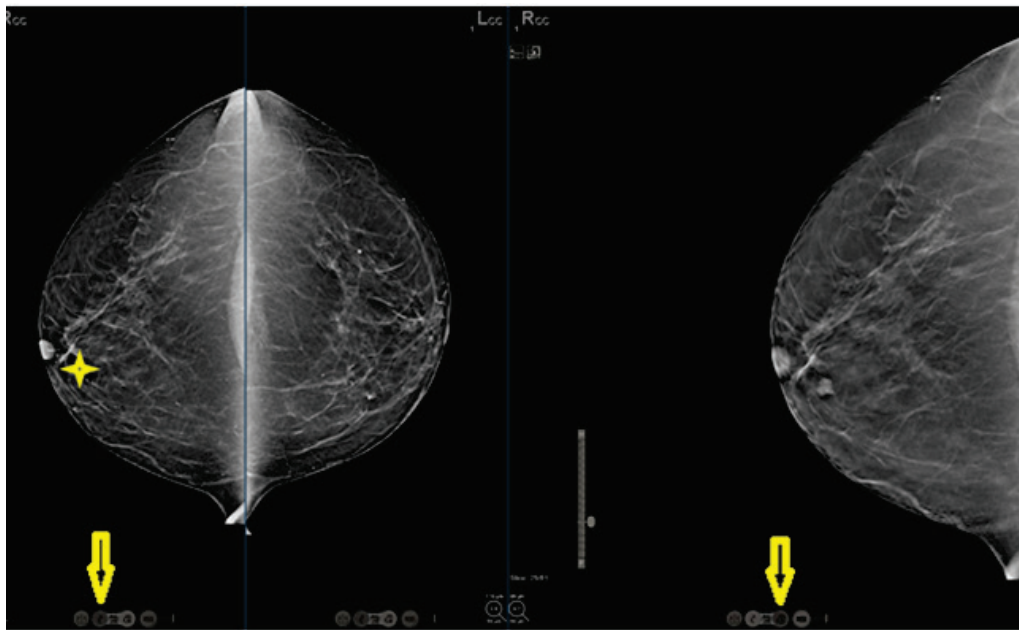


Figure 2: Double tiling with smart mapping activated