

SecurView®

Breast Imaging Workstation



SecurView® DX Workstation Quality Control Manual

MAN-11098 Revision 001

HOLOGIC®

SecurView[®] DX

Breast Imaging Workstation

Quality Control Manual

Part Number MAN-11098

Revision 001

September 2023

HOLOGIC[®]

Product Support

USA: +1.877.371.4372
Europe: +32 2 711 4690
Asia: +852 37487700
Australia: +1 800 264 073
All Other: +1 781 999 7750
Email: BreastHealth.Support@hologic.com

© 2023 Hologic, Inc. Printed in the USA. This manual was originally written in English.

Hologic, SecurView, Selenia, TechMate, and associated logos are trademarks and/or registered trademarks of Hologic, Inc., and/or its subsidiaries in the United States and/or other countries. All other trademarks, registered trademarks, and product names are the property of their respective owners.

This product may be protected by one or more U.S. or foreign patents as identified at www.Hologic.com/patents.

Libraries

Libtiff library © 1988-1997 Sam Leffler, 1991-1997 Silicon Graphics, Inc. OFFIS_DCMTK © 1994–2005, OFFIS.
MergeCOM-3 Advanced Integrator's Tool Kit – Version 4.8.0.0. PostgreSQL – Version 9.4.1 © 1996-2015, The PostgreSQL Global Development Group, 1994, The Regents of the University of California. jpeglib © 1991-1998, Thomas G. Lane.
xerces © 1999-2010 The Apache Software Foundation. 7-Zip © 1999-2009 Igor Pavlov. Qt 4.8.6 © 2014 Digia Plc and/or its subsidiary (-ies), licensed under LGPL v2.1. This Qt library has been adapted by MeVis Medical Solutions AG. You may obtain the complete corresponding source code, by sending an order to MeVis Medical Solutions AG, Support department, Caroline-Herschel-Str. 1, 28359 Bremen, Germany.

Contents

Chapter 1: Introduction.....	1
1.1. About This Manual.....	1
1.2. Document Conventions	2
1.3. Product Complaints	2
1.4. Terms and Definitions.....	2
Chapter 2: QC Activities for the Medical Physicist.....	5
2.1. QC Procedures for the Medical Physicist.....	6
2.2. Corrective Action	6
2.3. Reading Room Configuration Testing	7
Chapter 3: QC Activities for the Radiologic Technologist	9
3.1. QC Procedures for the Radiologic Technologist	9
3.2. Corrective Action	10
Chapter 4: Testing the Displays	11
4.1. Testing Built-in Photometer Sensor Displays.....	12
4.2. Testing External Photometer Sensor Displays	17
Chapter 5: Calibrating the Displays	25
Chapter 6: Additional Procedures	27
6.1. Saving the MediCal QAWeb Action History	27
6.2. Scheduling the Hologic Compliance Test.....	29
Appendix A: SecurView Annual QC Form for Medical Physicists.....	31
Appendix B: SecurView Weekly QC Form for Radiologic Technologists	33
Appendix C: Running Barco Coronis Uniti Auto-calibration Manually.....	34

Chapter 1: Introduction

- ▶ **1.1. About This Manual**
- ▶ **1.2. Document Conventions**
- ▶ **1.3. Product Complaints**
- ▶ **1.4. Terms and Definitions**

This manual provides procedures developed to ensure the consistency of the brightness, contrast, and image presentation of the displays used with Hologic's SecurView diagnostic review workstations.

Use the procedures and quality control (QC) forms in this manual to maintain an effective QC program that conforms to the rules of the United States Mammography Quality Standards Act (MQSA) or to become accredited by an accreditation body. This manual may also be used as a guide by facilities outside the United States to establish a QC program to conform to the applicable local standard acts and regulations. This manual is intended for use by Radiologic Technologists and Medical Physicists who are qualified to operate the SecurView system.

1.1. About This Manual

This manual is organized as follows:


- ▶ **Chapter 1: Introduction** provides an overview of the QC manual, training information, document conventions, and a glossary of terms.
- ▶ **Chapter 2: QC Activities for the Medical Physicist** specifies the QC procedures that are the responsibility of the Medical Physicist.
- ▶ **Chapter 3: QC Activities for the Radiologic Technologist** specifies the QC procedures that are the responsibility of the Radiologic Technologist.
- ▶ **Chapter 4: Testing the Displays** provides instructions for running the QC procedures for the various display configurations at the site.
- ▶ **Chapter 5: Calibrating the Displays** provides instructions for manually calibrating the displays, should it become necessary.
- ▶ **Chapter 6: Additional Procedures** provides instructions for saving the MediCal QAWeb Action History and manually setting the Hologic Compliance Test date.
- ▶ **Appendix A: SecurView Annual QC Form for Medical Physicists** provides forms for record-keeping for Medical Physicists.
- ▶ **Appendix B: SecurView Weekly QC Form for Radiologic Technologists** provides forms for record-keeping for Radiologic Technologists.
- ▶ **Appendix C: Running Barco Coronis Uniti Auto-calibration Manually** provides instructions for running Auto-calibration manually for a Uniti display when SteadyColor Calibration is enabled.

1.2. Document Conventions

This manual uses the following conventions to provide technical and safety information of special interest.

 **WARNING!** An instruction that, if not followed, can result in a hazardous condition.

 **CAUTION:** An instruction that, if not followed, can result in damage to the system.

 **Important:** An instruction provided to ensure correct results and optimal performance, or to clarify limitations of the device.

 **Note:** Background information provided to clarify a particular step or procedure.

1.3. Product Complaints

Any healthcare professional who has complaints or is dissatisfied with the quality, durability, reliability, safety, effectiveness, and/or performance of this product should notify Hologic.

If the device malfunctions and may have caused or contributed to a serious injury of a patient, notify Hologic immediately by telephone, fax, or written correspondence.

1.4. Terms and Definitions


cd/m ²	Candela per square meter (cd/m ²), the standard unit of luminance. It represents a luminous intensity of one candela radiating from a surface whose area is one square meter. Luminance is used to specify the brightness of computer displays.
DICOM	Digital Imaging and Communications in Medicine, an international standard for the exchange of imaging and related information.
GSDf	Grayscale Standard Display Function, a mathematical function that adjusts pixel brightness in order to compensate for the nonlinearity of human visual perception. DICOM GSDf improves conspicuity of findings in the extremes of luminance and provides a mechanism to standardize the appearance of images on displays of different inherent brightnesses and with different response curves.
LCD	Liquid Crystal Display. The technology used for displays in notebook and other computers. Like light-emitting diode (LED) technology, LCDs allow displays to be much thinner than cathode ray tube (CRT) technology.
Luminance	Luminance is a photometric measure of the luminous intensity per unit area of light travelling in a given direction. It describes the amount of light that passes through or is emitted from a particular area, and falls within a given solid angle. The International System of Units (SI) for luminance is candela per square meter (cd/m ²).
MQSA	Mammography Quality Standards Act. Created by the U.S. Food and Drug Administration (FDA) and approved by the U.S. Congress in 1994, MQSA establishes quality standards for mammography facilities. MQSA requires mammography facilities to be accredited by the FDA or an FDA-approved accreditation body, be certified by the FDA or the State, receive annual MQSA inspections, and display its FDA certification in a prominent area.
QA	Quality Assurance. Generally used to describe a program of policies, procedures, and practices intended to assure that quality standards are developed, maintained, and adhered to.

QC	Quality Control. Refers to one or more procedures intended to ensure that a manufactured product or performed service complies with a defined set of quality criteria and meets the requirements of the client or customer.
USB	Universal Serial Bus. A specification to establish communication between devices and a host controller such as a computer. This interface can connect a computer and add-on devices, such as media players, keyboards, flash drives, and printers.

Chapter 2: QC Activities for the Medical Physicist


- ▶ 2.1. QC Procedures for the Medical Physicist
- ▶ 2.2. Corrective Action
- ▶ 2.3. Reading Room Configuration Testing

Hologic provides QC software (MediCal QAWeb) that is used by service engineers and customers to establish and maintain the operating levels of the SecurView displays. The software analyzes the results of display calibration and compliance testing and indicates whether the displays meet the pre-programmed QC limits established by the manufacturer.

 **WARNING!** Connecting a QAWeb agent to a QAWeb server may overwrite the required Hologic Policy Map. When connecting to a QAWeb server contact Technical Support at +1.800.760.8342 to obtain the correct version of QAWeb that will maintain the required Hologic Policy Map.


During SecurView system installation, a service engineer uses the software to calibrate the displays. After installation, Radiologic Technologists use the software for the following two tests:

- **Weekly:** The Hologic Compliance Test verifies that the displays are performing within the preprogrammed limits. The Technologist records the results in the SecurView Weekly QC Form.
- **Semi-Annual Auto-Calibration:** The MediCal QAWeb software calibrates the displays twice a year to re-establish the operating levels. The Technologist records the results in the SecurView Weekly QC Form.

 **Note:** For the Barco Uniti™, High-Brightness, Coronis and Barco Nio MDNG-5221 displays, the MediCal QAWeb software runs the tests automatically. For the Barco Nio MDNG-6121 and MDNG-5121 displays, the Technologist must use a photometer and run the tests manually as explained in [Chapter 5: Calibrating the Displays](#).

In addition, Hologic recommends use of the MediCal QAWeb software for the following test:

- **Annually:** The Medical Physicist checks the most recent results of the Hologic Compliance Test and records them in the SecurView Annual QC Forms. See [Appendix A: SecurView Annual QC Form for Medical Physicists](#).

 **Note:** When displays are replaced or relocated the Medical Physicist needs to perform the Hologic Compliance Test results check.

2.1. QC Procedures for the Medical Physicist

Hologic recommends that a Medical Physicist check the performance of each SecurView diagnostic workstation display at least once a year using the procedure given below. Use the display QC software (MediCal QAWeb) provided with each SecurView workstation. For detailed instructions on using the software, see [Chapter 4: Testing the Displays](#).

► **To run the annual QC check:**

- 1 **Check performance records.** For each diagnostic workstation, review the [Appendix B: SecurView Weekly QC Form for Radiologic Technologists](#). Verify that the SecurView displays have been operating within the recommended tolerance limits.
- 2 **Review Hologic Compliance Test results.** Using the QC software, check the results of the most recent Hologic Compliance Test. If the test has not been run during the last week, then run the test.
- 3 **Verify results.** Ensure the Hologic Compliance Test results are within the recommended tolerance limits.
 - a For each display, check:
 - White level
 - DICOM GSDF compliance (Luminance Response)
 - b If the results do not meet specifications, see [2.2. Corrective Action](#).
- 4 **Record the results** in the following form(s):
 - [Appendix A: SecurView Annual QC Form for Medical Physicists](#)
 - [Appendix B: SecurView Weekly QC Form for Radiologic Technologists](#)
- 5 **For Selenia Dimensions systems:**
 - a At the Acquisition Workstation, select **Admin > Quality Control > Physicist tab > Diagnostic Review Workstation Quality Control**.
 - b Click the **Mark Completed** button to label the status of this procedure as finished.
 - c Click the **Yes** button to mark the QC procedure as completed.

2.2. Corrective Action

If any display does not meet the performance criteria, adjust room lighting conditions and repeat the action that failed. If the action fails after the *second* attempt, correct the problem before performing mammographic image interpretation using the instructions below:

If any performance criterion is not met, use the Auto-calibration procedure to recalibrate the display. Then rerun the Hologic Compliance Test and verify that the display performs within the recommended limits.

A qualified service engineer may have to resolve any issues if display operating levels are not within recommended ranges.

If the Details of a test contain no results, the test **shall** be run manually after making sure the displays are correctly attached and turned on. A qualified service engineer may have to resolve any issues if the Details of a test contain no results after the second attempt.

While you resolve display calibration issues, SecurView systems can still receive images. Use an alternative diagnostic device (for example, a second diagnostic workstation or DICOM printer) for mammography image interpretation until all issues are resolved and the displays perform within recommended ranges.

2.3. Reading Room Configuration Testing

A qualified in-person Medical Physicist performs testing when a reading room is initially configured, and after each year of operation. If equipment is replaced between these scheduled tests without changing the reading room configuration, this replacement does not require in-person Medical Physicist testing and is subject to the Medical Physicist's oversight.


At the suggestion of the Lead Interpreting Physician, the Medical Physicist may set White Level to be other than the default shown in the Performance Criteria table in [Appendix A: SecurView Annual QC Form for Medical Physicists](#).

Chapter 3: QC Activities for the Radiologic Technologist

▶ 3.1. QC Procedures for the Radiologic Technologist


▶ 3.2. Corrective Action

Hologic provides QC software (MediCal QAWeb) that is used by the Radiologic Technologist to maintain the operating levels of the SecurView displays. The software analyzes the results of display calibration and compliance testing and indicates whether the displays meet the pre-programmed QC limits established by the manufacturer.

 **WARNING!** Connecting a QAWeb agent to a QAWeb server may overwrite the required Hologic Policy Map. When connecting to a QAWeb server contact Technical Support at +1.800.760.8342 to obtain the correct version of QAWeb that will maintain the required Hologic Policy Map.

During SecurView system installation, a service engineer uses the software to calibrate the displays. After installation, Hologic recommends that Radiologic Technologists use the software to run two tests:

- **Weekly:** The Hologic Compliance Test verifies that the displays are performing within the preprogrammed limits. The Technologist records the results in the SecurView Weekly QC Form.
- **Semi-Annual Auto-calibration:** The MediCal QAWeb software calibrates the displays twice a year to re-establish the operating levels. The Technologist records the results in the SecurView Weekly QC Form.


 **Note:** For the Barco Uniti, High-Brightness, Coronis and Barco Nio MDNG-5221 displays, the MediCal QAWeb software runs the tests automatically. For the Barco Nio MDNG-6121 and MDNG-5121 displays, the Technologist must use a photometer and run the tests manually as explained in [Chapter 5: Calibrating the Displays](#).

3.1. QC Procedures for the Radiologic Technologist

Hologic recommends that a Radiologic Technologist check the performance of SecurView diagnostic workstation displays using the procedures given below. Use the QC software (MediCal QAWeb) provided with each workstation. For detailed instructions on using the software, see [Chapter 4: Testing the Displays](#).

▶ To run the weekly QC check:


1 Run the Hologic Compliance Test.

 **Note:** For displays that support scheduled Hologic Compliance Tests, verify successful completion of the tests the morning after the scheduled Hologic Compliance Tests occur. If the system failed one or more of the tests, the source of the problem must be identified and corrective action taken before the system is used for clinical purposes. See [3.2. Corrective Action](#).

- For the Barco Uniti, High-Brightness, Coronis and Barco Nio MDNG-5221 displays, MediCal QAWeb automatically runs the Hologic Compliance Test once a week. Verify that the test ran as scheduled and the Status displayed is 'OK'.
- For Barco Nio MDNG-6121 and MDNG-5121 displays, MediCal QAWeb prompts you to run the Hologic Compliance Test once a week. Run the test with the photometer and, when done, verify that the Action Result displayed is 'OK'.

When the QC Check is done, verify that 'Result: OK' appears. If results are not 'OK', see **3.2. Corrective Action**.

- 2 Record the results in the **Appendix B: SecurView Weekly QC Form for Radiologic Technologists**.

 **Note:** Hologic strongly recommends saving the MediCal QAWeb Action History monthly to prevent data loss in the event of a system failure. Hologic also recommends saving the Action History prior to a SecurView upgrade. See **6.1. Saving the MediCal QAWeb Action History**.

► **To run the semi-annual calibration:**

- 1 If the displays have not been calibrated during the last six months, use the QC software (Auto-calibration) to calibrate them.
- 2 Record the results in the **Appendix B: SecurView Weekly QC Form for Radiologic Technologists**.

► **For Selenia Dimensions systems only:**

After completing the QC procedure:

- 1 At the Acquisition Workstation, select **Admin > Quality Control > Technologist tab > Diagnostic Review Workstation Quality Control**.
- 2 Click the **Mark Completed** button to label the status of this procedure as finished.
- 3 Click the **Yes** button to mark the QC procedure as completed.

3.2. Corrective Action

If any display does not meet the performance criteria, adjust room lighting conditions and repeat the action that failed. If the action fails after the *second* attempt, correct the problem before performing mammographic image interpretation using the instructions below.

If any performance criterion is not met, use the Auto-calibration procedure to recalibrate the display. Then rerun the Hologic Compliance Test and verify that the display performs within the recommended limits.

A qualified service engineer may have to resolve any issues if display operating levels are not within recommended ranges.

If the Details of a test contain no results, the test **shall** be run manually after making sure the displays are correctly attached and turned on. A qualified service engineer may have to resolve any issues if the Details of a test contain no results after the second attempt.

While you resolve display calibration issues, SecurView systems can still receive images. Use an alternative diagnostic device (for example, a second diagnostic workstation or DICOM printer) for mammography image interpretation until all issues are resolved and the displays perform within recommended ranges.

Chapter 4: Testing the Displays


- ▶ 4.1. Testing Built-in Photometer Sensor Displays
- ▶ 4.2. Testing External Photometer Sensor Displays

This chapter provides detailed QC procedures for the various displays. The following table provides the Barco model number(s) for each of the displays:

Display	Barco Model Number
Coronis Uniti	MDMC-12133
High-Brightness	MDMG-5221
Coronis	MDCG-10130 MDMG-5121 MFGD-5621 HD MFGD-5421
Nio	MDNG-6121 MDNG-5121 MDNG-5221

There are two types of display configurations:

- **Built-in photometer sensor displays - Barco Uniti, High-Brightness, Coronis, and Barco Nio MDNG-5221:** The MediCal QAWeb software automatically runs the Hologic Compliance Test and calibrates the Barco displays on a scheduled basis. The QAWeb software relies on a built-in photometer sensor. No user intervention is required – you only need to verify that the software ran the test as scheduled and that the results were within the tolerance ranges. The default scheduled time is between 12:00 midnight and 2:00 AM.
- **External photometer sensor displays - Barco Nio (MDNG-6121 and MDNG-5121):** The MediCal QAWeb software automatically alerts you to run the Hologic Compliance Test and calibrate these Barco Nio displays on a scheduled basis. You will use an external photometer to run the QC procedures.

 **Important:** When testing the displays, ensure that the room lighting conditions are similar to those used when reading studies.

4.1. Testing Built-in Photometer Sensor Displays

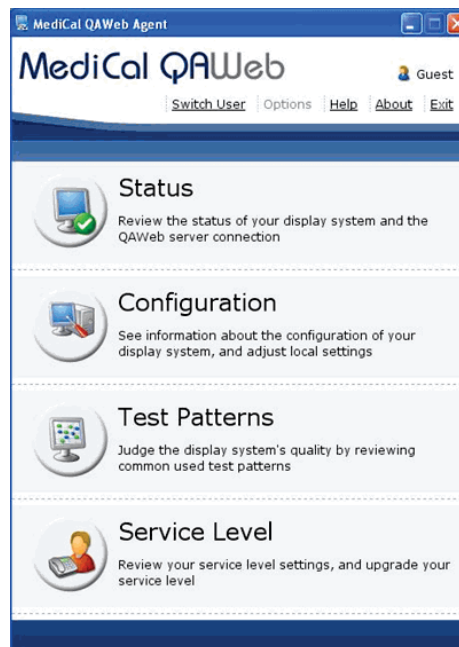
For built-in photometer sensor displays, MediCal QAWeb automatically runs the Hologic Compliance Test once a week and the Auto-calibration routine twice a year. Use this procedure as follows:

- **Radiologic Technologist:** Verify that the test(s) ran successfully.
- **Medical Physicist:** Review and record the numerical results from the most recent Hologic Compliance Test.

⚠ Note: *Hologic recommends for displays older than five years that the Medical Physicist use an external photometer once a year for the luminance check to confirm the internal photometer is still operating correctly. The luminance measured by the photometer must be within 15% of the calibrated luminance. The calibrated luminance for each display can be found in the configuration of QAWeb Agent or in the most recent compliance check results in the status.*

► **To check the performance of Barco displays:**

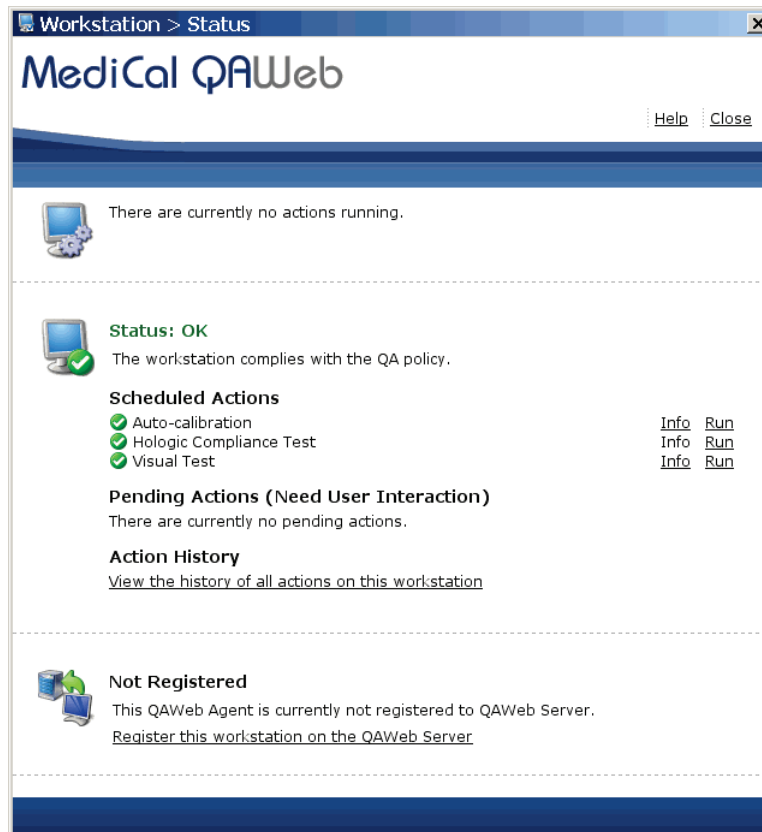
- 1 Log out any user from the SecurView DX application.
- 2 Start MediCal QAWeb by pressing the **Windows** key and selecting **Programs > Barco > MediCal QAWeb Agent**. The MediCal QAWeb Agent window appears.



⚠ Note (Windows XP users): *After logging out of SecurView, the Windows key is sometimes not active, which prevents users from manually starting up the MediCal QAWeb software. In such a situation, start MediCal QAWeb as follows:*

- a Log into SecurView as an **Administrator** user. Then select the **Exit to Windows** tab.
 - b From the Windows desktop, double-click the **MediCal QAWeb** icon (or select **Start > Programs > Barco > MediCal QAWeb Agent**).
 - c From the main MediCal QAWeb window, select **Switch User**.
 - d Log into MediCal QAWeb as the **Advanced** user with the password 'advanced' (case-sensitive).
- 3 Click the **Status** icon.

The Workstation > Status window appears:



The Status window indicates whether the workstation meets the recommended performance criteria. At any time, you can click **Run** to run a test manually (Auto-calibration, Hologic Compliance Test, or Visual Test).

Note: *Manually calibrating the Uniti display with SteadyColor Calibration will show colors in the most optimum and consistent way, and all grayscales with as little hue variation as possible. To manually calibrate the Uniti display with SteadyColor Calibration, refer to [Appendix C: Running Barco Coronis Uniti Auto-calibration Manually](#).*

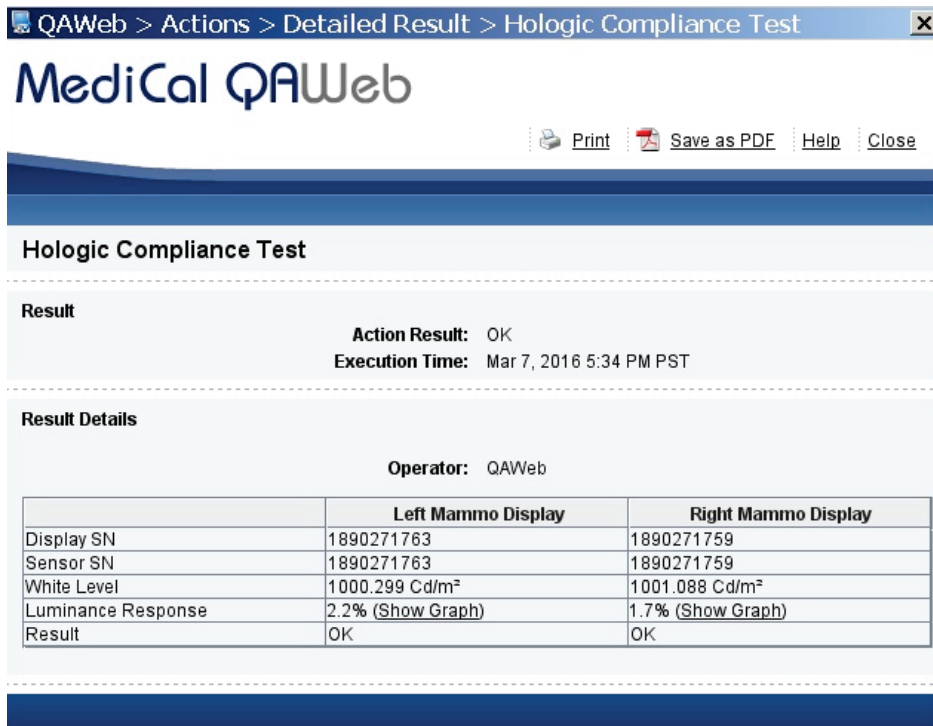
Note: *To manually calibrate the Uniti display without SteadyColor Calibration, navigate to **Configuration > Calibration**, click **Calibrate**, enter the password 'advanced' (case sensitive), click **Advanced**, and uncheck **SteadyColor Calibration**. Click **Calibrate**.*

Note: *When you manually run the Auto-calibration Test, you may be prompted for a password. By default, the password is 'advanced' (case sensitive).*

- 4 **Radiologic Technologist** – To complete the tests and view results:
 - a Verify that 'Status: OK' appears.
 - b Click **Info** next to 'Hologic Compliance Test'. The most recent results for the test appear.
 - c Verify that 'Action Result: OK' appears.




- d Click **View Detailed Results**. A window appears with the detailed results.



- e Record the value for **Action Result** in **Appendix B: SecurView Weekly QC Form for Radiologic Technologists**.

⚠ Important: If the Details of a test contain no results, follow instructions in **3.2. Corrective Action**.

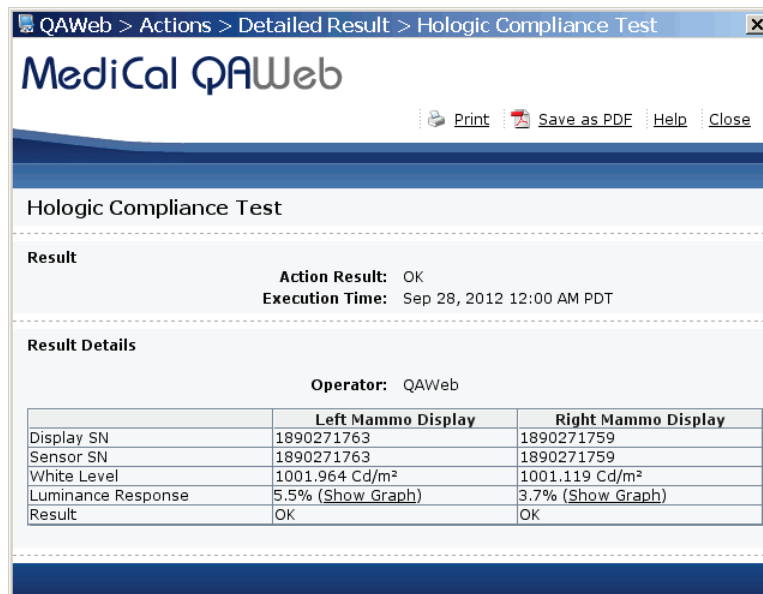
 **Note:** You may **Print** the results or **Save as PDF** for a local copy from this window. Click **Close** once you are finished.

- f** Click **Close** to return to the Status window.
- g** Close all open MediCal QAWeb windows.

- 5 **Medical Physicist** – To view the numerical results of the Hologic Compliance Test:
 - a On the Status window, click **Info** next to ‘Hologic Compliance Test’. The most recent results for the test appear as shown in the following example:



- b Click **View Detailed Result**. A window appears with the detailed results.



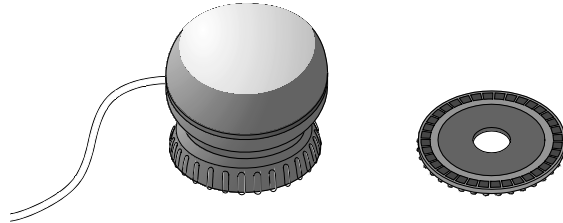
- c Verify that the results meet the performance criteria.
 - d Record the results in the **Appendix A: SecurView Annual QC Form for Medical Physicists**.
 - e Click **Close** twice to return to the Status window.
 - f Close all open MediCal QAWeb windows.

4.2. Testing External Photometer Sensor Displays

For external photometer sensor displays, MediCal QAWeb alerts you to run the Hologic Compliance Test once a week and the Auto-calibration procedure (see [Chapter 5: Calibrating the Displays](#)) twice a year. Use the procedure in this section as follows:

- **Radiologic Technologist:** Run the QC tests and verify that they ran successfully.
- **Medical Physicist:** Review and record the numerical results from the most recent Hologic Compliance Test.

To calibrate the displays, users must have available an external photometer as shown below.



Barco Photometer Sensor and Felt Pad Attachment (previous model)

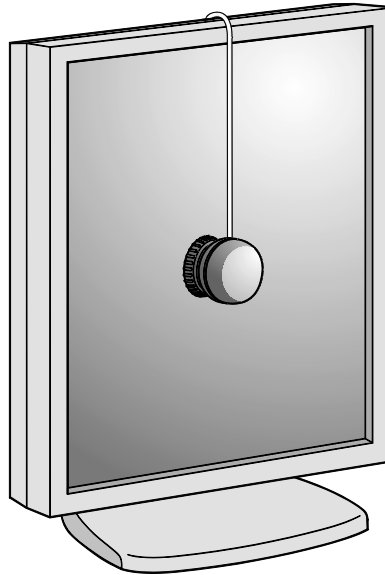


Barco Photometer Sensor (new model)

When performing these test procedures, note the following:

- Verify that the Barco USB Photometer is plugged into the same USB port in which it was originally installed. If the sensor was removed for any reason, reconnect it as explained on the next page before continuing (see [Reconnecting the Photometer Sensor](#) on the next page).
- Verify that the felt pad is attached to the photometer sensor. If the felt pad is not attached, reconnect it as explained on the next page before continuing (see [Attaching the Felt Pad to the Photometer Sensor](#) on the next page).
- The new model of the sensor does not have a felt pad attachment. Verify that the photometer sensor is open by flipping the cover.

⚠ Note: *The only difference between the previous model and the new model of the Photometer Sensor is that the new model does not have the felt pad attachment. All other functions are similar.*



Using a Photometer to Calibrate the Display

Reconnecting the Photometer Sensor

The Barco photometer sensor is USB-port-specific and does not function if inserted into a different USB port than the one originally used when installed. After installation, there should be no need to remove the sensor from the original USB port. If the photometer is not connected to its USB port, then reconnect it as described here.

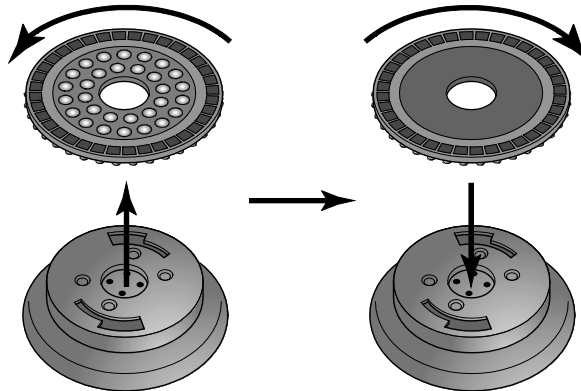
- 1 Log into Windows as **Administrator**.
- 2 Plug the Barco photometer sensor into an open USB port.
 - If a log-in prompt asks you to log into an account that is part of the Administrators group, click **Cancel** and try a different USB port. When you plug into the correctly configured port, the system will not prompt you to log into another account.
 - If a Found New Hardware Wizard window appears after connecting the photometer sensor, click **Cancel** and try a different USB port. When you plug into the correctly configured port, a Found New Hardware Wizard window should not appear.
- 3 If you cannot find the correct USB port, contact Technical Support at +1.800.760.8342.

⚠ Note: The new model of the Photometer Sensor does not have a felt pad. The instructions to attach the felt pad to the Photometer Sensor apply only to previous model.

Attaching the Felt Pad to the Photometer Sensor

The felt pad attachment is included with the display calibration kit. If you need to reconnect the felt pad, follow the instructions below.

- 1 If the suction cup attachment is installed, remove by turning it approximately one-quarter turn counter-clockwise and then separating the attachment from the main portion of the photometer.

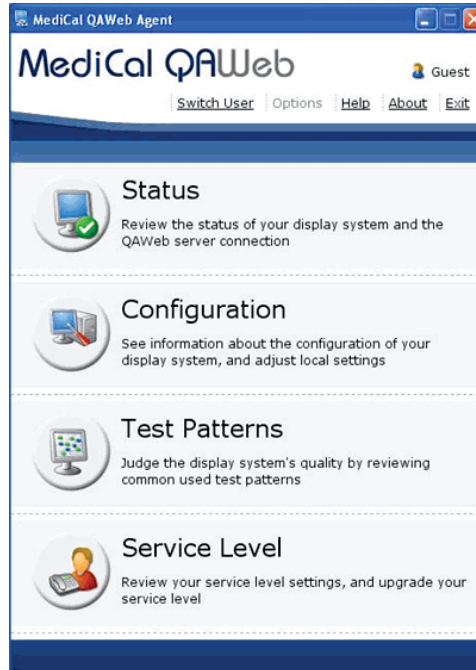


Removing the Suction Cup and Installing the Felt Pad

- 2 Install the felt pad by attaching it to the main portion of the photometer and turn it approximately one-quarter turn clockwise.

► **To test the displays:**

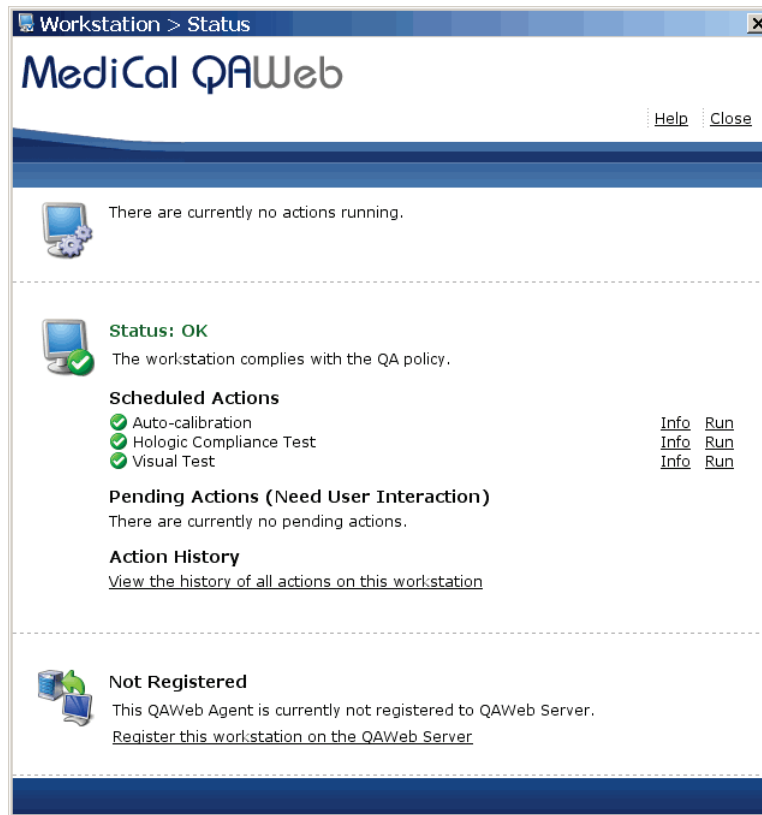
- 1 Log out any user from the SecurView DX application.
- 2 Start MediCal QAWeb by pressing the **Windows** key and selecting **Programs > Barco > MediCal QAWeb Agent**. The MediCal QAWeb Agent window appears.



⚠ Note (Windows XP users): After logging out of SecurView, the Windows key is sometimes not active, which prevents users from manually starting up the MediCal QAWeb software. In such a situation, start MediCal QAWeb as follows:

- a Log into SecurView as an **Administrator** user. Then select the **Exit to Windows** tab.
 - b From the Windows desktop, double-click the **MediCal QAWeb** icon (or select **Start > Programs > Barco > MediCal QAWeb Agent**).
 - c From the main MediCal QAWeb window, select **Switch User**.
 - d Log into MediCal QAWeb as the **Advanced** user with the password 'advanced' (case-sensitive).
- 3 Click the **Status** icon.

The Workstation > Status window appears:



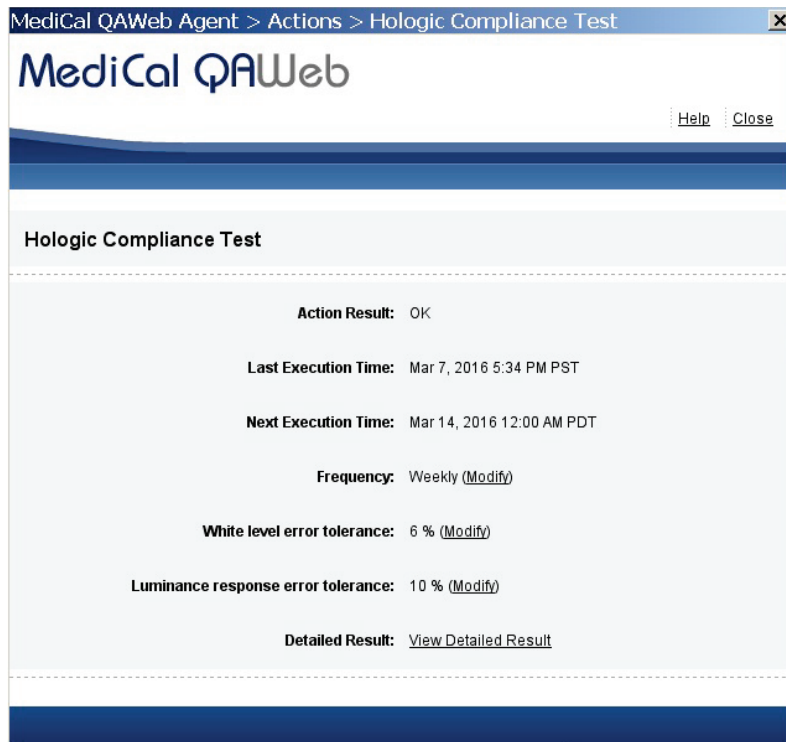
The Status window indicates whether the displays meet the recommended performance criteria. At any time, you can click **Run** to run a test manually (Auto-calibration, Hologic Compliance Test, or Visual Test).

Note: When you manually run the Auto-calibration Test, you may be prompted for a password. By default, the password is 'advanced' (case-sensitive).

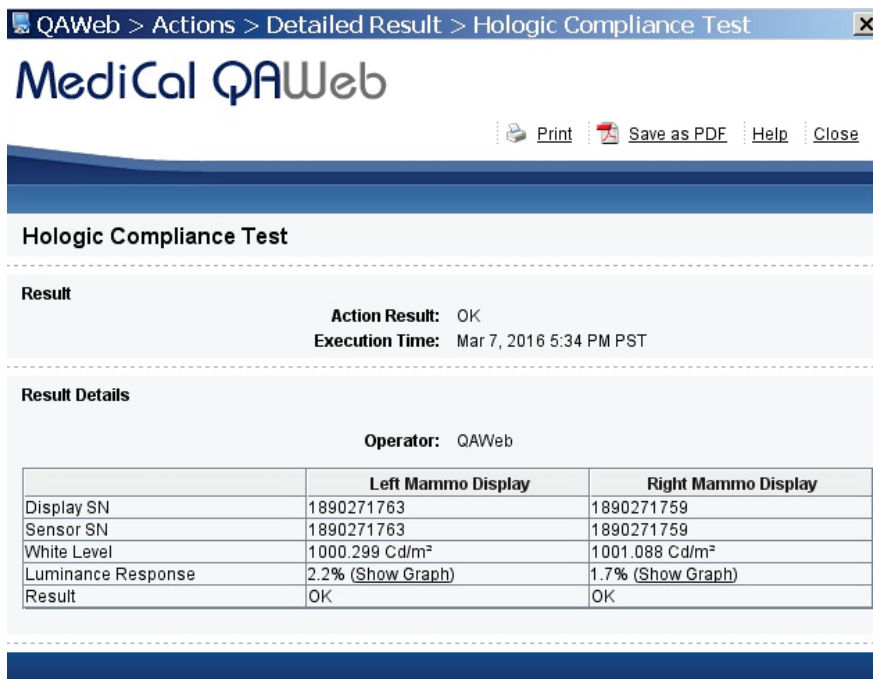
4 Radiologic Technologist – To run the **Hologic Compliance Test** and view results:

Important: When testing the displays, ensure that the room lighting conditions are similar to those used when reading studies.

- a Click **Run** next to 'Hologic Compliance Test'. Follow the on-screen instructions.
- b After the test ends, verify that 'Status: OK' appears.
- c Click **Info** next to 'Hologic Compliance Test'. The most recent results for the test appear.
- d Verify that 'Action Result: OK' appears.



e Click **View Detailed Results**. A window appears with the detailed results.



f Record the value for **Action Result** in **Appendix B: SecurView Weekly QC Form for Radiologic Technologists**.

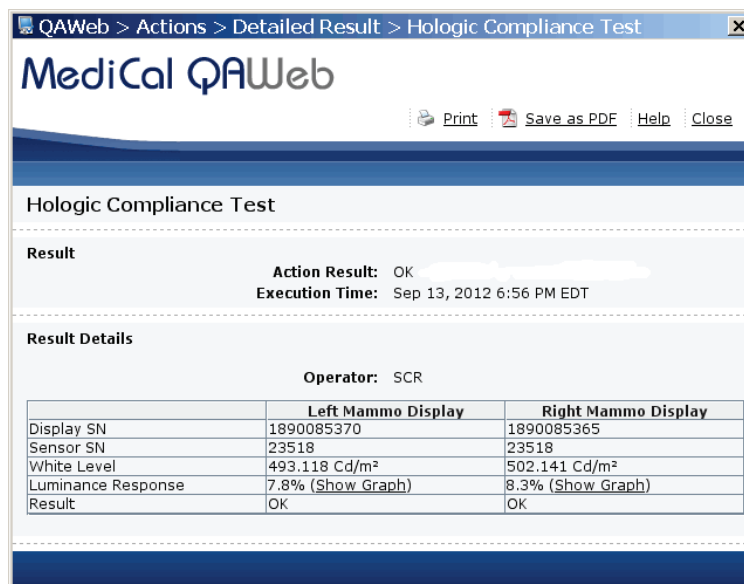
⚠ Important: If the Details of a test contain no results, follow instructions in **3.2. Corrective Action**.

Note: You may **Print** the results or **Save as PDF** for a local copy from this window. Click **Close** once you are finished.

- g Click **Close** to return to the Status window.
 - h Close all open MediCal QAWeb windows.
- 5 **Medical Physicist** – To view the numerical results of the Hologic Compliance Test:
- a On the Status window, click **Info** next to ‘Hologic Compliance Test’. The most recent results for the test appear as shown in the following example:



- b Click **View Detailed Result**. A window appears with the detailed results.



- c Verify that the results meet the performance criteria.


- d Record the results in the [Appendix A: SecurView Annual QC Form for Medical Physicists](#).
- e Click **Close** twice to return to the Status window.
- f Close all open MediCal QAWeb windows.

Chapter 5: Calibrating the Displays

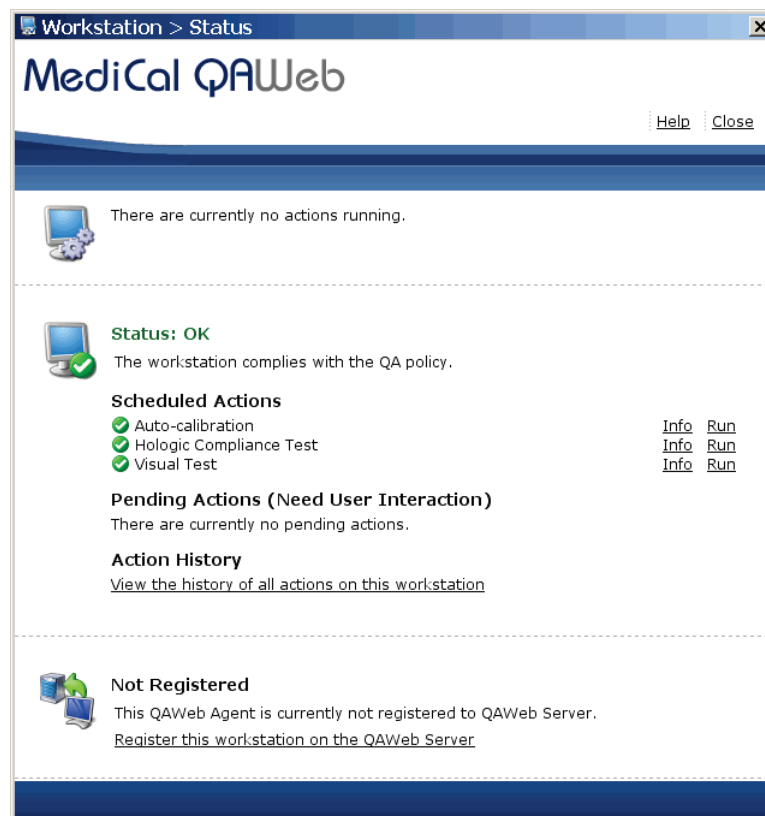
Use this procedure:

- For manually calibrating the Barco Nio (MDNG-6121 and MDNG-5121) displays on a semi-annual basis. MediCal QAWeb automatically alerts the Radiologic Technologist when it is time to calibrate these Barco Nio displays.
 - Whenever it is necessary to perform an unscheduled calibration.
- 1 Log out any user from the SecurView DX application.


- 2 Set up the displays and start MediCal QAWeb as described in [Chapter 4: Testing the Displays](#).

 **Note:** If you are calibrating external photometer sensor displays, attach the photometer sensor as described in [4.2. Testing External Photometer Sensor Displays](#).

- 3 From the MediCal QAWeb Agent window, click the Status icon. The Workstation > Status window appears.



- 4 On the Status window, click **Run** next to 'Auto-calibration'.

 **Note:** When you manually run the Auto-calibration Test, you may be prompted for a password. By default, the password is 'advanced' (case sensitive).

- 5 Follow the on-screen instructions. Repeat for the second display. When the calibration procedure ends, the results appear as shown in the example below. The check mark next to each display icon indicates that the calibration ran successfully.




- 6 Record the results in the **Appendix B: SecurView Weekly QC Form for Radiologic Technologists**.
- 7 Close all open MediCal QAWeb windows.

Note: The “Next Execution Time” for the Auto-calibration will be six months after the last day the test was manually run. It is important to continue monitoring the dates the tests are due for semi-annual documentation. The monitors may require calibration in between the six-month time frames if the Hologic Compliance Test fails.

Chapter 6: Additional Procedures

- ▶ 6.1. Saving the MediCal QAWeb Action History
- ▶ 6.2. Scheduling the Hologic Compliance Test


6.1. Saving the MediCal QAWeb Action History

 **WARNING!** Connecting a QAWeb agent to a QAWeb server may overwrite the required Hologic Policy Map. When connecting to a QAWeb server contact Technical Support at +1.800.760.8342 to obtain the correct version of QAWeb that will maintain the required Hologic Policy Map.


Hologic strongly recommends saving the MediCal QAWeb Action History monthly to prevent data loss in the event of a system failure. Hologic also recommends saving the Action History prior to a SecurView upgrade.

Printing the Action History provides a hardcopy record of all of the actions run on the SecurView workstation during a given month. Hologic recommends retaining the printed Action History as proof of compliance. Use the following procedure to save the Action History to a USB drive and then transfer it to a different computer for printing.

- 1 Log out any user from the SecurView DX application.
- 2 Insert a USB drive into the SecurView workstation.
- 3 Start MediCal QAWeb by pressing the **Windows** key and selecting **Programs > Barco > MediCal QAWeb Agent**. The MediCal QAWeb Agent window appears.

 **Note (Windows XP users):** After logging out of SecurView, the Windows key is sometimes not active, which prevents users from manually starting up the MediCal QAWeb software. In such a situation, start MediCal QAWeb as follows:

- a Log into SecurView as an **Administrator** user. Then select the Exit to Windows tab.
 - b From the Windows desktop, double-click the **MediCal QAWeb** icon (or select **Start > Programs > Barco > MediCal QAWeb Agent**).
 - c From the main MediCal QAWeb window, select **Switch User**.
 - d Log into MediCal QAWeb as the **Advanced** user with the password 'advanced' (case-sensitive).
- 4 Click the **Status** icon. The Workstation > Status window appears.
 - 5 In the 'Action History' section, click the **View the history of all actions on this workstation** link. The Action History window appears. This window displays all of the actions run on the workstation during one month.


 **Note:** Use the **From** and **To** calendar menu to specify a date range for the Action History results.

Date	Name	Display	Operator	Result
Sep 12, 20...	Visual Test	Barco MDRC 2120, 9382002606	Priscilla	OK
Sep 12, 20...	Visual Test	Barco MDNG-5121 BB, 1890085...	Priscilla	OK
Sep 12, 20...	Visual Test	Barco MDNG-5121 BB, 1890085...	Priscilla	OK
Sep 10, 20...	Auto-calibration	Barco MDNG-5121 BB, 1890085...	Administr...	OK
Sep 10, 20...	Auto-calibration	Barco MDNG-5121 BB, 1890085...	Administr...	OK
Sep 10, 20...	Auto-calibration	Barco MDNG-5121 BB, 1890085...	Administr...	OK
Sep 10, 20...	Auto-calibration	Barco MDNG-5121 BB, 1890085...	-	NOT OK
Sep 10, 20...	Hologic Compliance T...	-	Administr...	OK
Sep 10, 20...	Auto-calibration	Barco MDNG-5121 BB, 1890085...	QAWeb	OK
Sep 10, 20...	Auto-calibration	Barco MDNG-5121 BB, 1890085...	QAWeb	OK
Sep 10, 20...	Auto-calibration	Barco MDRC 2120, 9382002606	QAWeb	OK

- 6 Click **View as PDF**. The QAWeb Action History .pdf file opens.
 - ⚠ **Note:** The SecurView workstation must have Adobe Acrobat Reader installed in order to view the Action History as a .pdf file.
- 7 Select File > Save As...
- 8 Navigate to the USB drive where you want to save the QAWeb Action History .pdf file.
- 9 Click **Save**.
- 10 Click **Close** twice to return to the Status window.
- 11 Close all open MediCal QAWeb windows.
- 12 Remove the USB drive from the SecurView workstation.
- 13 Insert the USB drive into a computer with Adobe Acrobat Reader installed and printer capabilities.
- 14 Open the QAWeb Action History .pdf file and select **File > Print**. The print dialog opens.
- 15 Specify the printing options and click **Print**.

6.2. Scheduling the Hologic Compliance Test

By default, the Hologic Compliance Test automatically runs weekly (except on systems using external photometer sensor displays). Use this procedure to change the time/day of the scheduled Hologic Compliance Test.

- 1 Log out any user from the SecurView DX application.
- 2 Start MediCal QAWeb by pressing the **Windows** key and selecting **Programs > Barco > MediCal QAWeb Agent**. The MediCal QAWeb Agent window appears.
 -  **Note (Windows XP users):** After logging out of SecurView, the Windows key is sometimes not active, which prevents users from manually starting up the MediCal QAWeb software. In such a situation, start MediCal QAWeb as follows:
 - a Log into SecurView as an **Administrator** user. Then select the Exit to Windows tab.
 - b From the Windows desktop, double-click the **MediCal QAWeb** icon (or select **Start > Programs > Barco > MediCal QAWeb Agent**).
 - c From the main MediCal QAWeb window, select **Switch User**.
 - d Log into MediCal QAWeb as the **Advanced** user with the password 'advanced' (case-sensitive).
- 3 Click the **Status** icon. The Workstation > Status window appears.
- 4 On the Status window, click **Info** next to 'Hologic Compliance Test'. The Hologic Compliance Test window appears.
- 5 Click **Modify** next to 'Frequency:'. The MediCal QAWeb login window appears.
- 6 By default, the User is 'Advanced'. Type advanced (case sensitive) in the Password field and click **OK**. The Modify Hologic Compliance Test Frequency window appears.
- 7 Select **Custom** from the Frequency: drop-down menu.
- 8 Click **Properties**. The Modify Custom Frequency of Hologic Compliance Test window appears.
- 9 In the 'Timing' area, choose the test start time and select the day(s) you want the test to run. Click **OK**.
- 10 Click **OK** in the Modify Hologic Compliance Test Frequency window.
- 11 Close all open windows.

Appendix A: SecurView Annual QC Form for Medical Physicists

Complete this form once a year for each SecurView diagnostic workstation.


System Information				
SecurView SN				
Photometer SN				
Barco Display	Left Display	Pass/Fail	Right Display	Pass/Fail
Serial Number				
White Level Performance	cd/m ²		cd/m ²	
Luminance Response	%		%	
Barco Display	Single Display		Pass/Fail	
Serial Number				
White Level Performance	cd/m ²			
Luminance Response	%			
Comments:				
Signature:			Date:	

Performance Criteria


Barco Display	White Level Luminance	White Level Performance	DICOM GSDF Performance
Coronis Uniti MDMC-12133	600 - 1000 cd/m ²	± 6%	± 10%
High-Brightness MDMG-5221	600 - 1000 cd/m ²	± 6%	± 10%
Coronis Fusion 10MP MDCG-10130	500 cd/m ²	± 6%	± 10%
Coronis 5MP MDMG-5121	600 cd/m ²	± 6%	± 10%
Coronis 5MP MFGD-5621 HD	600 cd/m ²	± 6%	± 10%
Coronis 5MP MFGD-5421	500 cd/m ²	± 6%	± 10%
Nio 5MP MDNG-6121	500 cd/m ²	± 6%	± 10%
Nio 5MP MDNG-5121	500 cd/m ²	± 6%	± 10%
Nio 5MP MDNG-5221	500 cd/m ²	± 6%	± 10%

Appendix C: Running Barco Coronis Uniti Auto-calibration Manually

Follow this procedure to manually run Medical QAWeb's Auto-calibration feature for the 12MP Barco Coronis Uniti display with SteadyColor Calibration.

- 1 Log into SecurView as an Administrator user.
Username: admin
Password: admin
- 2 Click the Exit to Windows tab. Wait until the application has fully closed.
- 3 Click the **Start** button from the task bar, and select **Log Off**.
- 4 Log into Windows as the customer administrator.
Username: customer
Password: Simply-The-Best
- 5 Start MediCal QAWeb by pressing the **Windows** key and selecting **Programs > Barco > MediCal QAWeb Agent**. The MediCal QAWeb Agent window appears.
- 6 From the MediCal QAWeb Agent window, click the Status icon. The Workstation > Status window appears.
- 7 On the Status window, click **Run** next to 'Auto-calibration'.
 **Note:** When you manually run the Auto-calibration Test, you may be prompted for a password. By default, the password is 'advanced' (case sensitive).

After the Auto-calibration has finished running:

- 1 Click **Start > Log Off**.
- 2 Log into Windows as **SCR**. The SecurView application automatically restarts.
 **Note:** If the SCR user requires a password you do not have, reboot the workstation to restart the SecurView application automatically.

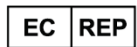
HOLOGIC®



Hologic, Inc.
600 Technology Drive
Newark, DE 19702 USA
1.800.447.1856

Australia

Hologic (Australia) Pty Ltd.
Suite 402, Level 3
2 Lyon Park Road
Macquarie Park NSW 2113
Australia
1.800.264.073



Hologic, BV
Da Vincilaan 5
1930 Zaventem
Belgium
Tel: +32.2.711.46.80
Fax: +32.2.725.20.87



Refer to the corporate website for more facilities worldwide.
www.hologic.com