

CTB-00950**Date:** *September 24, 2021***Author:** Service Engineering**Product:** Selenia Dimensions/
3Dimensions**Subsystem:** N/A**Subject:** Viewboxes and Viewing Conditions QC Test**Purpose**

The purpose of this document is to provide guidance on the viewboxes and viewing conditions.

Scope

This bulletin is applicable to all Selenia Dimensions and 3Dimensions systems.

Instructions

The Hologic QC manual MAN-03706 provides instructions for performing the Viewboxes and Viewing Conditions QC test. This test may not be applicable for all sites.

Viewboxes refer to the boxes that are illuminated by fluorescent lamps that are used to read x-ray films. (Reference Figure 1)

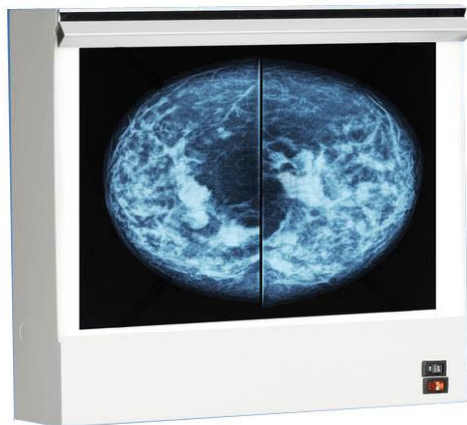


Figure 1 – Example of a Mammography View Box

Technical Bulletin (cont.)

Viewboxes do not refer to the acquisition workstation (AWS) monitor or the radiologist workstation monitors (RWS).

For sites that use viewboxes for review, follow the guidance provided in the appropriate QC manual. If viewboxes are not used at your site, this test is not applicable and does not need to be performed.