

CTB-01257 Rev 001

Date: *December 14, 2023*

Author: R & D/Technical Support

Product: Selenia Dimensions/
3Dimensions

Subsystem: AWS

Subject: Explanation of Linear Feature in the IMF or Cleavage Area on Selenia Dimensions/3Dimensions Systems Using C-View

Purpose

To provide information on a linear feature that may become visible on Selenia Dimensions/3Dimensions systems in the Inframammary Fold (IMF) or Cleavage Area of a C-View image.

Scope

This Customer Technical Bulletin applies to all Selenia Dimensions/3Dimensions Systems licensed with C-View.

Technical Bulletin (cont.)

Discussion

Digital Breast Tomosynthesis (DBT) images acquired using Selenia Dimensions/3Dimensions systems may display a shadow artifact in the slices within the reconstructed image due to the nature of the scan geometry as shown in Figure 1.

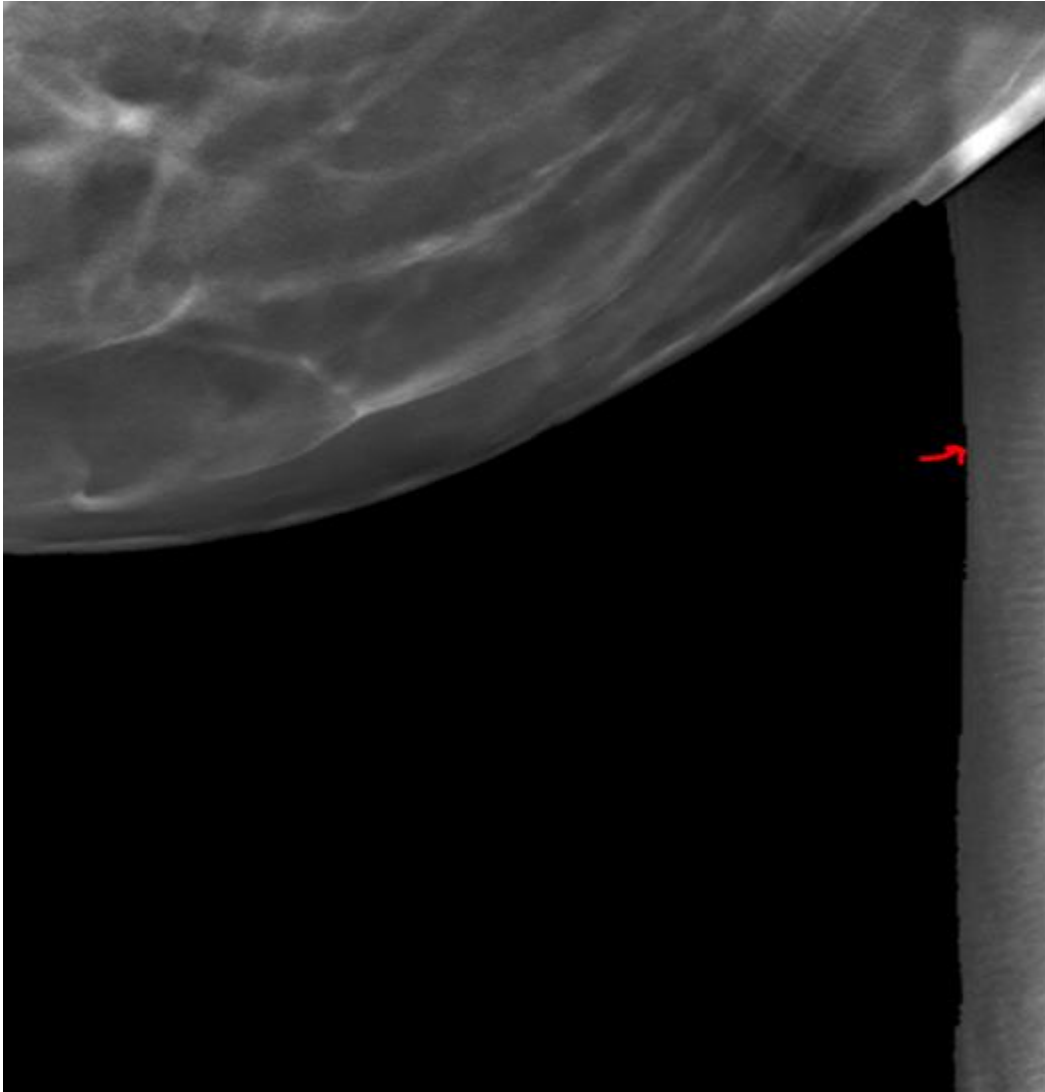


Figure 1 – Shadow Artifact Seen in DBT Slices

Technical Bulletin (cont.)

The acquired DBT images are combined to generate the C-View image which may display a linear feature that appears vertically in the IMF or cleavage area as shown in Figure 2.



Figure 2 – Vertical Linear Feature Seen on C-View Image

Technical Bulletin (cont.)

This linear feature is a direct result of the process used for generating the C-View image from the tomo reconstruction slices and is an expected behavior. It does not affect the diagnostic value of the DBT images (both reconstructions and synthetic 2D images).

This linear feature will not be as apparent on the Intelligent 2D images because a different method is used to generate the synthesized 2D image from the Clarity HD reconstruction.