

A Powerful Ultrasound System for Breast Imaging

Introducing the SuperSonic™ MACH 30 Ultrasound Imaging Platform



SuperSonic™ Mach 30 system also known as Aixplorer Mach® 30 system.

References: 1, 4 - Berg WA et al. Radiology. 2012 Feb; 262(2):435-49. | 2 - Mullen R et al. Clin Radiology. 2014 Dec; 69(12):1259-63.
 3 - Lee SH et al. Ann Surg Oncol. 2015 Dec; 22 Suppl 3:376-84.

Indications for Use: The SuperSonic Imagine Aixplorer MACH® range ultrasound diagnostic systems and transducers are intended for general purpose pulse echo ultrasound imaging, soft tissue viscoelasticity imaging and Doppler fluid flow analysis of the human body. The Aixplorer MACH® ultrasound diagnostic systems are indicated for use in the following applications, for imaging and measurement of anatomical structures: Abdominal, Small Organs, Musculoskeletal, Superficial Musculoskeletal, Vascular, Peripheral Vascular, Intraoperative, OB-GYN, Pelvic, Pediatric, Transrectal, Transvaginal, Urology, Neonatal/Adult Cephalic and Non-invasive Cardiac. It is intended for use by licensed personnel

www.hologic.com | BSHSalesSupportUS@Hologic.com | +1.800.442.9892

Hologic Headquarters
United States / Latin America
 250 Campus Drive
 Marlborough, MA 01752
 USA Tel: +1.508.263.2900
 Sales: +1.781.999.7453
 Fax: +1.781.280.0668
 Email: info@hologic.com

Hologic Europe
 Everest (Cross Point)
 Leuvensesteenweg
 250A 1800
 Vilvoorde, Belgium
 Tel: +32.2.711.4680
 Fax: +32.2.725.2087

Hologic Asia Pacific Limited
 Unit 01-03A, 13/F,
 clar909 Cheung Sha Wan,
 No. 909 Cheung Sha Wan Road,
 Cheung Sha Wan
 Kowloon, Hong Kong
 Tel: +852 3748 7700
 Fax: +852 3526 0723

Hologic Australia
 Suite 402, Level 4
 2 Lyon Park Road
 Macquarie Park NSW 2113
 Australia
 Tel: +61.2.9888.8000
 Fax: +61.2.9870.7555

PB-00796 Rev.001 (11/19) ©2019 Hologic Inc. All rights reserved. Hologic, Aixplorer, Aixplorer Mach, SonicPad, The Science of Sure, ShearWave, SuperSonic, TriVu, UltraFast and associated logos are trademarks and/or registered trademarks of Hologic, Inc., and/or its subsidiaries in the United States and/or other countries. This information is intended for medical professionals in the U.S. and other markets and is not intended as a product solicitation or promotion where such activities are prohibited. Because Hologic materials are distributed through websites, eBroadcasts and tradeshow, it is not always possible to control where such materials appear. For specific information on what products are available for sale in a particular country, please contact your local Hologic representative.

SuperSonic MACH 30

Addressing your expectations with UltraFast™ innovations

SuperSonic MACH 30 ultrasound system - powered by the next generation of UltraFast™ imaging - leverages 10 years of clinical expertise to help you handle routine to comprehensive breast exams with ease and confidence.

By analyzing your exam workflow, SuperSonic MACH 30 was designed to **maximize comfort and drive efficiency** in a busy practice thanks to its ease of use and streamlined ergonomics.

The **exceptional image quality** of the SuperSonic MACH 30 combined with access to **advanced capabilities** delivers the level of premium performance you expect and patients deserve.



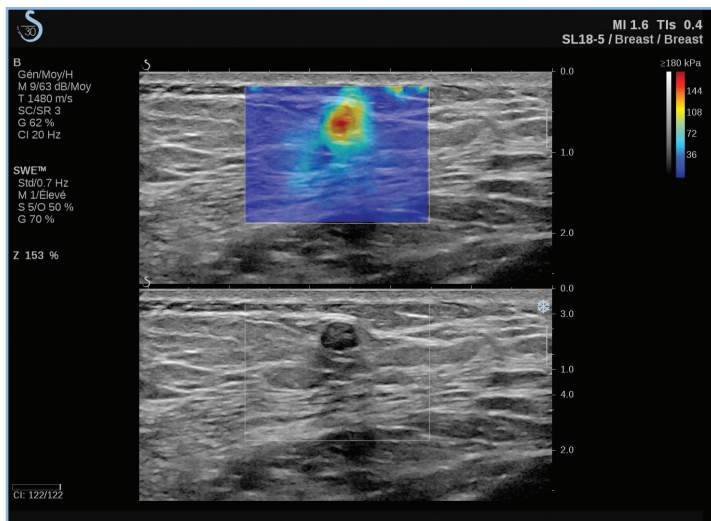
Value Based Innovations in Breast Imaging

Experience evidence-based outcomes and improving the patient experience

Over the years, SuperSonic Imagine introduced several innovative imaging modes — made possible by its UltraFast™ technology. These innovations integrate with routine workflow, to deliver added value into breast imaging and improve patient management.

ShearWave™ PLUS

ShearWave Elastography (SWE) from SuperSonic Imagine is the only technique capable of visualizing, analyzing and quantifying the tissue stiffness in real-time, on all transducers. This non-invasive approach remains reliable and highly reproducible in 2D and 3D.



Key attributes:

- Large region of interest SWE PLUS
- Increased SWE PLUS frame rates
- Accelerated filling of the SWE PLUS box
- Increased penetration to visualize deep lesions
- Preserving the quality of the B-mode



REAL-TIME SHEARWAVE™ ELASTOGRAPHY

SuperSonic Imagine's proprietary shear wave-based elastography technology is the most clinically studied elastography in its category. With over 150 publications in peer-reviewed medical journals, SWE has been proven to be a complementary tool for:

- Breast lesion diagnosis and characterization¹
- Biopsy planning² and treatment
- Therapy monitoring³ and prognostics

Pushing the Boundaries of Breast Imaging

Image quality and innovative modes for diagnostic confidence

The innovative transducer designs and powerful capabilities of software-based architecture are optimizing signal-to-noise ratio at each step of signal processing.

SonicPure, excellent B-mode image quality with incredible definition in both fundamental and harmonic imaging modes.

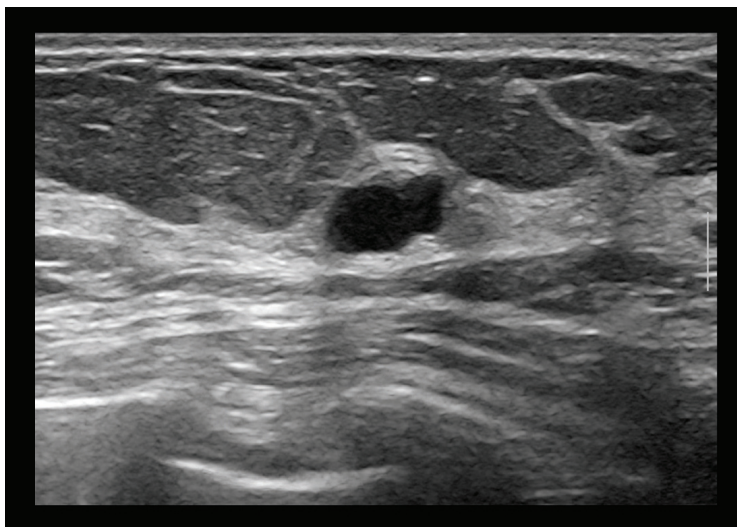
- Optimized penetration settings to visualize structures at variable depths and in dense breasts
- SuperCompound: fast compounding for smoother images with reduced speckle
- SuperRes: enhanced delineation of structures to improve lesion conspicuity
- TissueTuner: clear images obtained by matching the speed of sound to tissue density
- AutoTGC: automatic optimization of the gain for the entire image

ULTRAFAST™ IMAGING

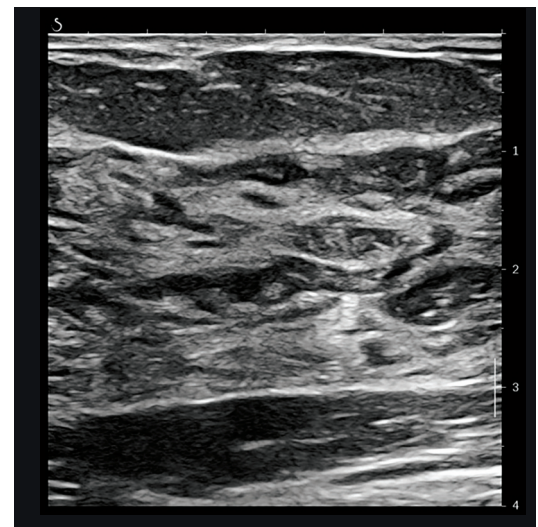
The UltraFast™ technology — first introduced on Aixplorer® in 2009 — allows for the capture of images 200 times faster than conventional ultrasound.

In addition to obtaining genuine diagnostic B-mode information, this unmatched technology has led to several breakthroughs that offer new possibilities for patient management: real-time elastography ShearWave™ PLUS, TriVu™ technology, Angio PLUS and Needle PLUS.

The next generation of the UltraFast™ technology — introduced on SuperSonic MACH 30 — has 5x more computing power*.



SonicPure: Excellent lesion conspicuity



SonicPure: Exceptional tissue differentiation

** In comparison with previous Aixplorer® products.*