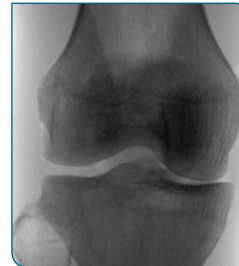


Hologic's Guide to Positioning Perfectly Every Time

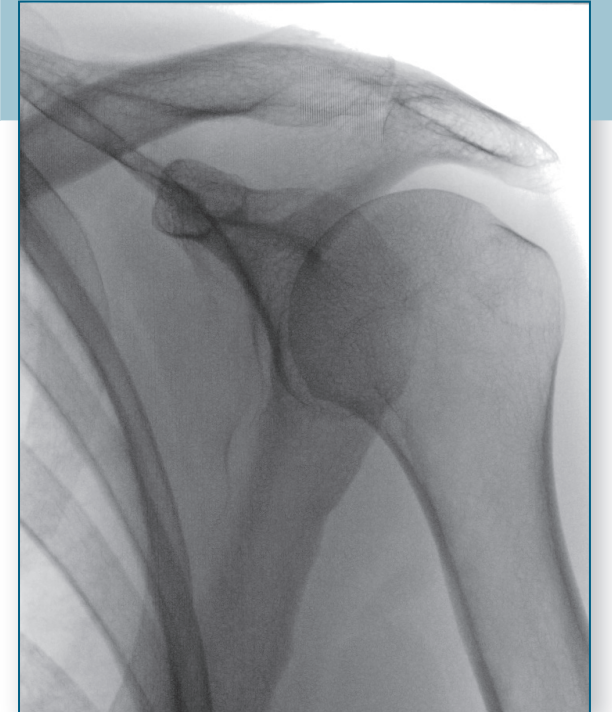


Fluorscan®
InSight™ FD Mini C-arm

Table of Contents

1. Shoulder/Clavicle Beach Chair	2
2. Shoulder Axillary View	3
3. Wrist A/P with Finger Traps	4
4. Wrist Lateral with Finger Traps	5
5. Wrist A/P on arm board using tilt of head.....	6
6. Wrist Lateral on arm board using tilt of head	7
7. Wrist Oblique View	8
8. Hand A/P	9
9. Hand Lateral	10
10. Elbow A/P.....	11
11. Elbow Lateral	12
12. Knee A/P Off Table	13
13. Knee Lateral Off Table.....	14
14. Ankle A/P	15
15. Ankle Lateral	16
16. Ankle Oblique View	17
17. Over scan on foot A/P	18

1. Shoulder/Clavicle Beach Chair



2. Shoulder Axillary



3. Wrist A/P with Finger Traps



4. Wrist Lateral with Finger Traps



5. Wrist A/P on arm board using tilt of head



6. Wrist Lateral on arm board using tilt of head



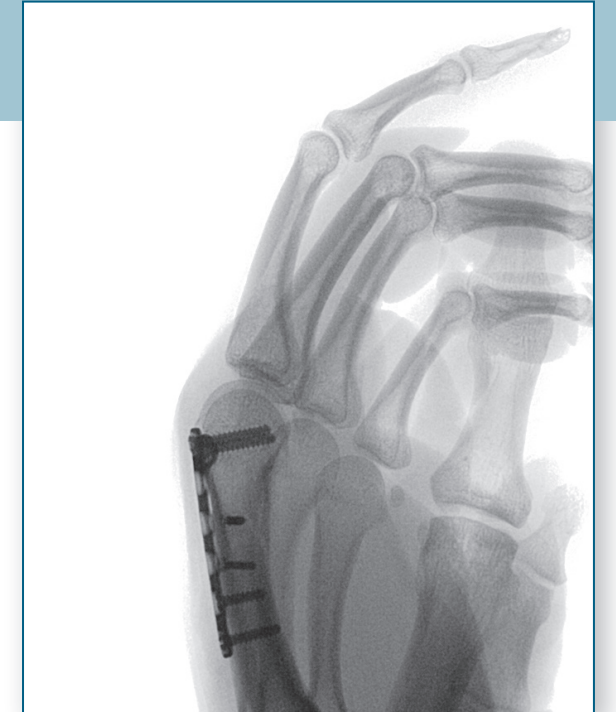
7. Wrist Oblique



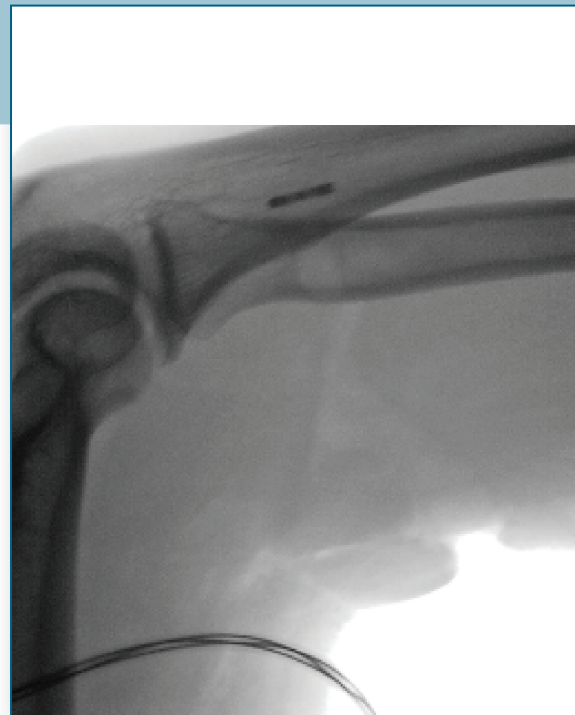
8. Hand A/P



9. Hand Lateral



10. Elbow A/P



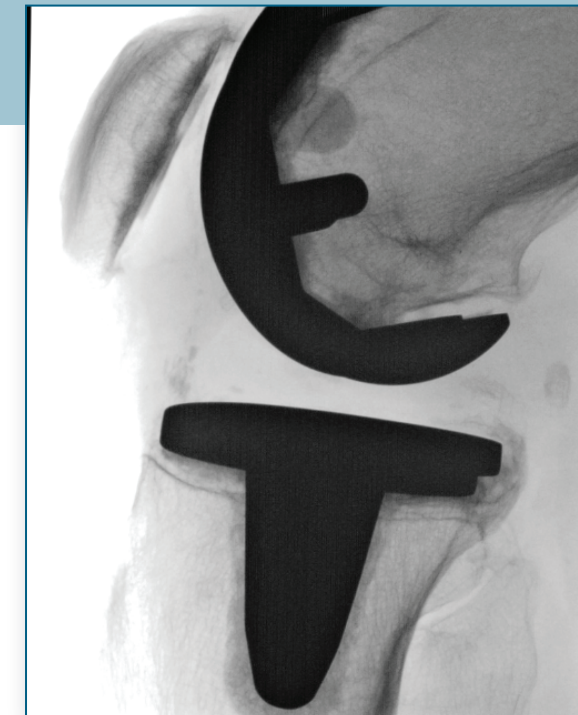
11. Elbow Lateral



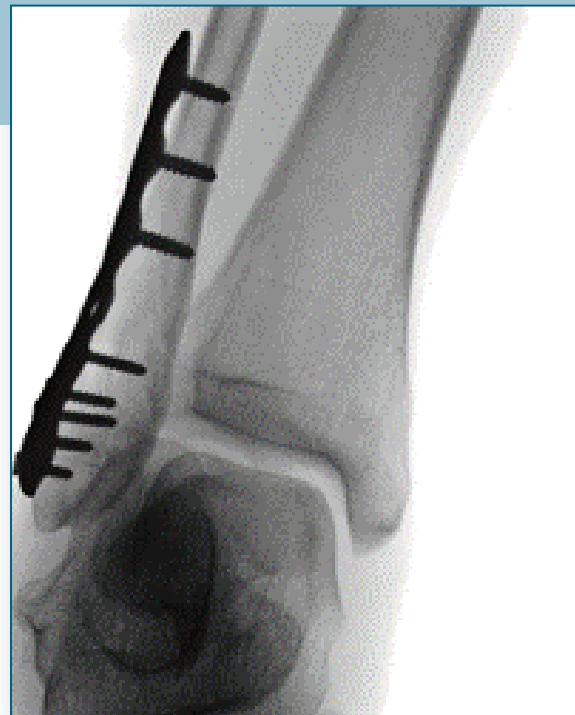
12. Knee A/P Off Table



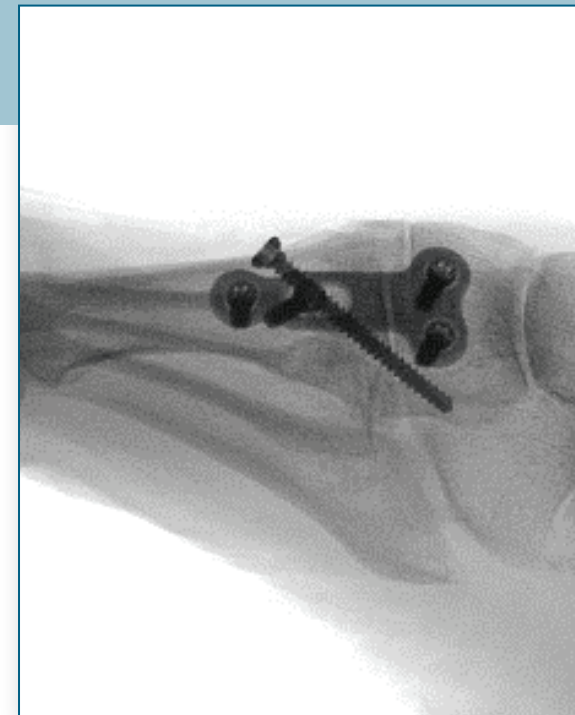
13. Knee Lateral Off Table



14. Ankle A/P



15. Ankle Lateral



16. Ankle Oblique



17. Over scan on foot A/P



MISC-06138-001 Rev. 001 ©2019 Hologic, Inc. Hologic, Fluoroscan, InSight, The Science of Sure and associated logos are trademarks or registered trademarks of Hologic, Inc. and/or its subsidiaries in the United States and/or other countries. All other trademarks and registered trademarks are the property of their respective owners.

