

An Ultrasound System Designed for Breast Imaging

Breast Cancer is impacting women across the nation; about 1 in 8 women in the U.S. will develop invasive breast cancer over the course of her lifetime.¹ In 2017, an estimated 255,180 new cases of invasive breast cancer are expected to be diagnosed in women and men and 63,410 new cases of non-invasive breast cancer*.

- Today's busy practice needs a non-invasive comprehensive imaging solution for the management of breast cancer patients.
- Aixplorer® Series offers a premium breast ultrasound system leveraging its unique UltraFast™ technology. This software-based architecture has allowed SuperSonic Imagine to continue to offer innovation without compromise.
- ShearWave™ Elastography (SWE), is a technique capable of measuring non-invasive tissue stiffness with all probes in real-time.
- The 3D patented ShearWave™ Elastography map provides unprecedented clinical information of the elasticity distribution inside and around a breast lesion. 3D SWE maximizes diagnostic potential and is a must-have tool for lesion characterization, lesion follow-up during treatment, and surgical planning.



Innovative **Ultrasound** Imaging

SuperTransducers – the natural extension of your hand

A comprehensive suite of breast optimized transducers with specific presets across all imaging modes are designed to increase efficiency and diagnostic confidence.

Real-time ShearWave Elastography

A real-time technique capable of measuring tissue stiffness non-invasive making exams easier and more comfortable for the patient. The ShearWave PLUS available on the SuperSonic Mach 30 sets new standards in ultrasound.

Angio PLUS Planewave UltraSensitive™ Imaging

A new level of microvascular imaging with improved color sensitivity and spatial resolution.

TriVu™ Technology

Combines real-time simultaneous imaging of B-mode, ShearWave PLUS and Angio PLUS enabling you to visualize the anatomy, the function (tissue stiffness) and blood flow on the same image.

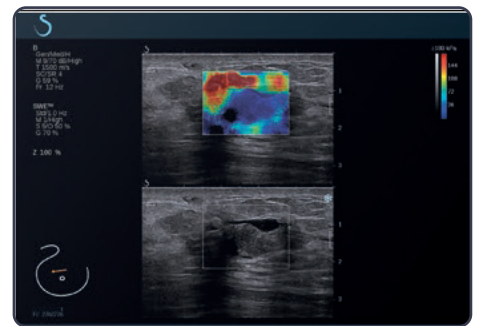
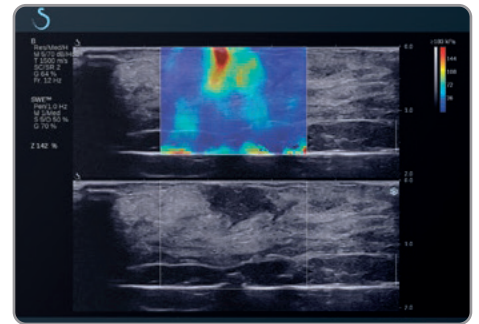
Needle PLUS

Visualize and predict the trajectory of the needle in real-time with precision and confidence.

Clinical Outcomes

Real-time ShearWave Elastography has been proven to be a complementary tool for the management of breast cancer patients for:

- Lesion characterization²
- Surgical planning³
- Therapy monitoring⁴



SuperSonic™ Mach 30 system also known as Aixplorer Mach® 30 system.

* Available soon

References: 1. Breast Cancer.org Fact Sheet, American Cancer Society 2. Berg WA et al. Radiology. 2012 Feb; 262(2):435-49
 3. Mullen R et al. Clin Radiol. 2014 Dec; 69(12):1259-63 4. Lee SH et al. Ann Surg Oncol. 2015 Dec; 22 Suppl 3:376-84

For a complete list of clinical publications please contact your local sales representative.

Indications for Use: The SuperSonic Imagine Aixplorer MACH® range ultrasound diagnostic systems and transducers are intended for general purpose pulse echo ultrasound imaging, soft tissue viscoelasticity imaging and Doppler fluid flow analysis of the human body. The Aixplorer MACH® ultrasound diagnostic systems are indicated for use in the following applications, for imaging and measurement of anatomical structures: Abdominal, Small Organs, Musculoskeletal, Superficial Musculoskeletal, Vascular, Peripheral Vascular, Intraoperative, OB-GYN, Pelvic, Pediatric, Transrectal, Transvaginal, Urology, Neonatal/Adult Cephalic and Non-invasive Cardiac. It is intended for use by licensed personnel qualified to direct the use of the medical ultrasound devices. CE certificate no. 26415, FDA cleared K180572

www.hologic.com | BSHSalesSupportUS@Hologic.com | + 1.800.442.9892

**Hologic Headquarters
 United States / Latin America**
 250 Campus Drive
 Marlborough, MA 01752
 USA Tel: +1.508.263.2900
 Sales: +1.781.999.7453
 Fax: +1.781.280.0668
 Email: info@hologic.com

Hologic Europe
 Everest (Cross Point)
 Leuvensesteenweg
 250A 1800
 Vilvoorde, Belgium
 Tel: +32.2.711.4680
 Fax: +32.2.725.2087

Hologic Asia Pacific Limited
 Unit 01-03A, 13/F
 No. 909 Cheung Sha Wan Road
 Cheung Sha Wan
 Kowloon, Hong Kong
 Tel: +852 3748 7700
 Fax: +852 3526 0723

Hologic Australia
 Suite 402, Level 4
 2 Lyon Park Road
 Macquarie Park NSW 2113
 Australia
 Tel: +61.2.9888.8000
 Fax: +61.2.9870.7555

SS-00899 Rev. 002 (1/20) ©2020 Hologic Inc. All rights reserved. Hologic, Aixplorer, Aixplorer Mach, ShearWave, TriVu, UltraFast, The Science of Sure and associated logos are trademarks and/or registered trademarks of Hologic, Inc., and/or its subsidiaries in the United States and/or other countries. This information is intended for medical professionals in the U.S. and other markets and is not intended as a product solicitation or promotion where such activities are prohibited. Because Hologic materials are distributed through websites, eBroadcasts and tradeshows, it is not always possible to control where such materials appear. For specific information on what products are available for sale in a particular country, please contact your local Hologic representative.