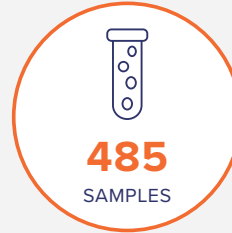


Flexibility of Panther Fusion® Respiratory panels: Flu A/B/RSV, Paraflu 1-4, AdV/hMPV/RV

Introduction

Panther Fusion® Respiratory assays offer a flexible, mini-panel approach to testing. The Panther Fusion® system bridges the gap between small panels (2-3 targets which are typically limited to Flu/RSV) and large panels (15+ targets). A pre-market evaluation was presented by Northwell Health Laboratories at the 2017 American Society for Microbiology Clinical Virology Symposium.

Study Design



Method comparison
The Panther Fusion® system vs BioFire and Luminex NxTAG



Flu A, Flu B, RSV, Paraflu 1-4, Adenovirus, hMPV, Rhinovirus

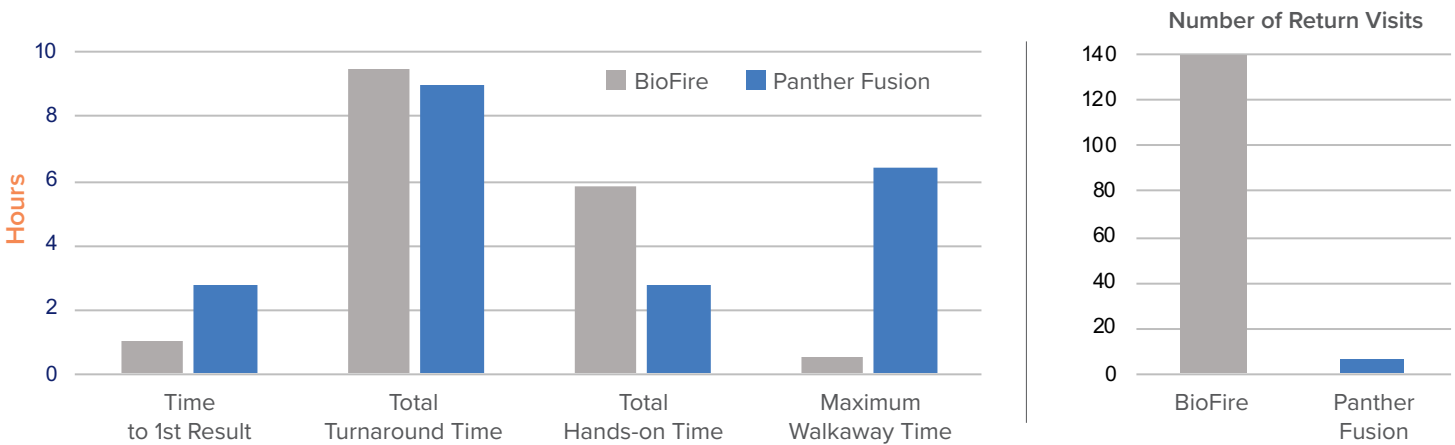
Workflow Evaluation

Laboratories balance many variables to maximize efficiencies and process samples quickly and accurately while optimizing labor usage. For the workflow evaluation in this study, 140 nasopharyngeal (NP) swab samples were tested to compare the Panther Fusion® Respiratory panels to BioFire Film Array RP.





16 BioFire FilmArray RP instruments
and **2** Full-time Employees

VS

1 Panther Fusion® instrument and
1 Full-time Employee



In this workflow evaluation, Northwell Health Laboratories found that although the time-to-first result is faster on BioFire, the Panther Fusion system has the benefits of:¹

- 
 Significantly less return visits
- 
 Significantly less hands-on time
- 
 Substantially greater walk away time
- 
 Comparable total turnaround time

Flexibility of Panther Fusion® Respiratory panels: Flu A/B/RSV, Paraflu 1-4, AdV/hMPV/RV

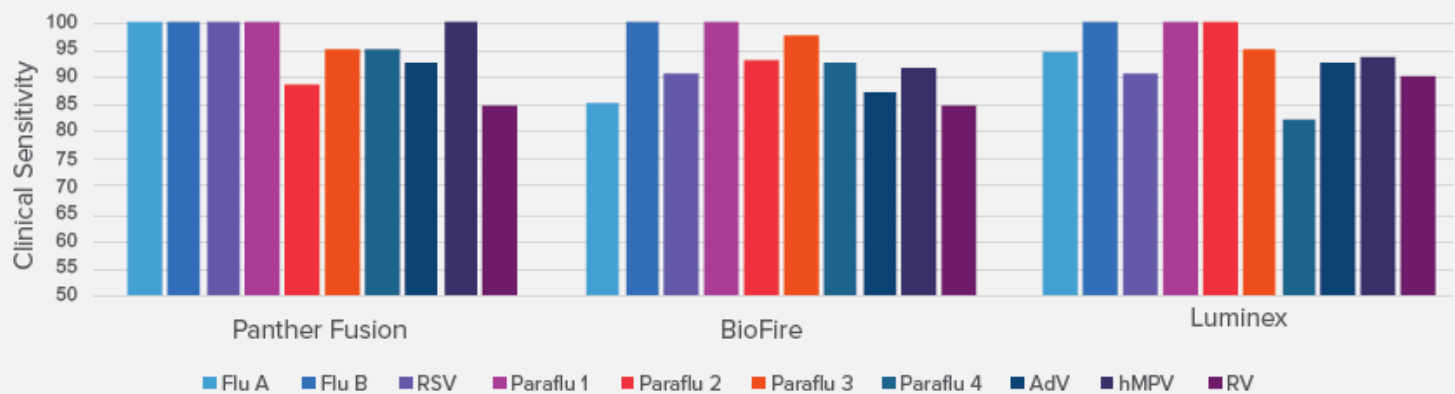
Performance Results

The Panther Fusion Respiratory assays compared equally or better than Luminex and BioFire. The flexible option of smaller panels (Flu A/B/RSV, Paraflu 1-4, AdV/hMPV/RV), rather than large syndromic panels with >15 targets, allows for testing as few as 3 or up to 10 targets from a single patient sample.

Overall sensitivity of the Panther Fusion® assays



Performance by analyte¹



Conclusions

In this pre-market evaluation, the laboratory found that:

- 1** The Panther Fusion Respiratory assays compared equally or better than Luminex and BioFire
- 2** The individual panels can be adaptably performed, individually or combined
- 3** This flexibility provides a viable option for directed ordering and cost control
- 4** Panther Fusion assays allow for flexibility of panel testing as few as 3 or up to 10 targets with one patient sample

Reference: 1. Manji RH, et al. Pre-Market Evaluation of Three Real Time PCR Respiratory Virus Assays Compared to Two FDA-Cleared Molecular Panels. Poster presented at Clinical Virology Symposium; May 7-10, 2017; Savannah, GA (Unpublished).

All trademarks, registered trademarks and product names are the property of their respective owners.

WP-00267-001 Rev 001. © 2023 Hologic, Inc. All rights reserved. Hologic, Panther Fusion and associated logos are trademarks and/or registered trademarks of Hologic, Inc. and/or its subsidiaries in the United States and/or other countries. All other trademarks are the property of their respective owners. This information is intended for medical professionals in the U.S. and is not intended as a product solicitation or promotion where such activities are prohibited. Because Hologic materials are distributed through websites, eBroadcasts and tradeshows, it is not always possible to control where such materials appear. For specific information on what products are available for sale in a particular country, please contact your local Hologic representative or write to diagnostic.solutions@hologic.com.